

	PROJECT REFERENCE NO.	R-0513A	SHEET NO.	5
	R/W SHEET NO.			
	ROADWAY DESIGN ENGINEER			
	HYDRAULICS ENGINEER			
CONST. REV.				
R/W REV.				

-SRI-
 Pls Sta 14+62.198 PI Sta 15+92.445 Pls Sta 17+21.973
 $\Theta_s = 1^\circ 14' 05.4''$ $\Delta = 1^\circ 11' 04.7''$ (LT) $\Theta_s = 1^\circ 14' 05.4''$
 $L_s = 50,000$ $L = 226,442$ $L_s = 50,000$
 $LT = 33,334$ $T = 113,582$ $LT = 33,334$
 $ST = 16,667$ $R = 1,600,000$ $ST = 16,667$
 $SE = 0.03$

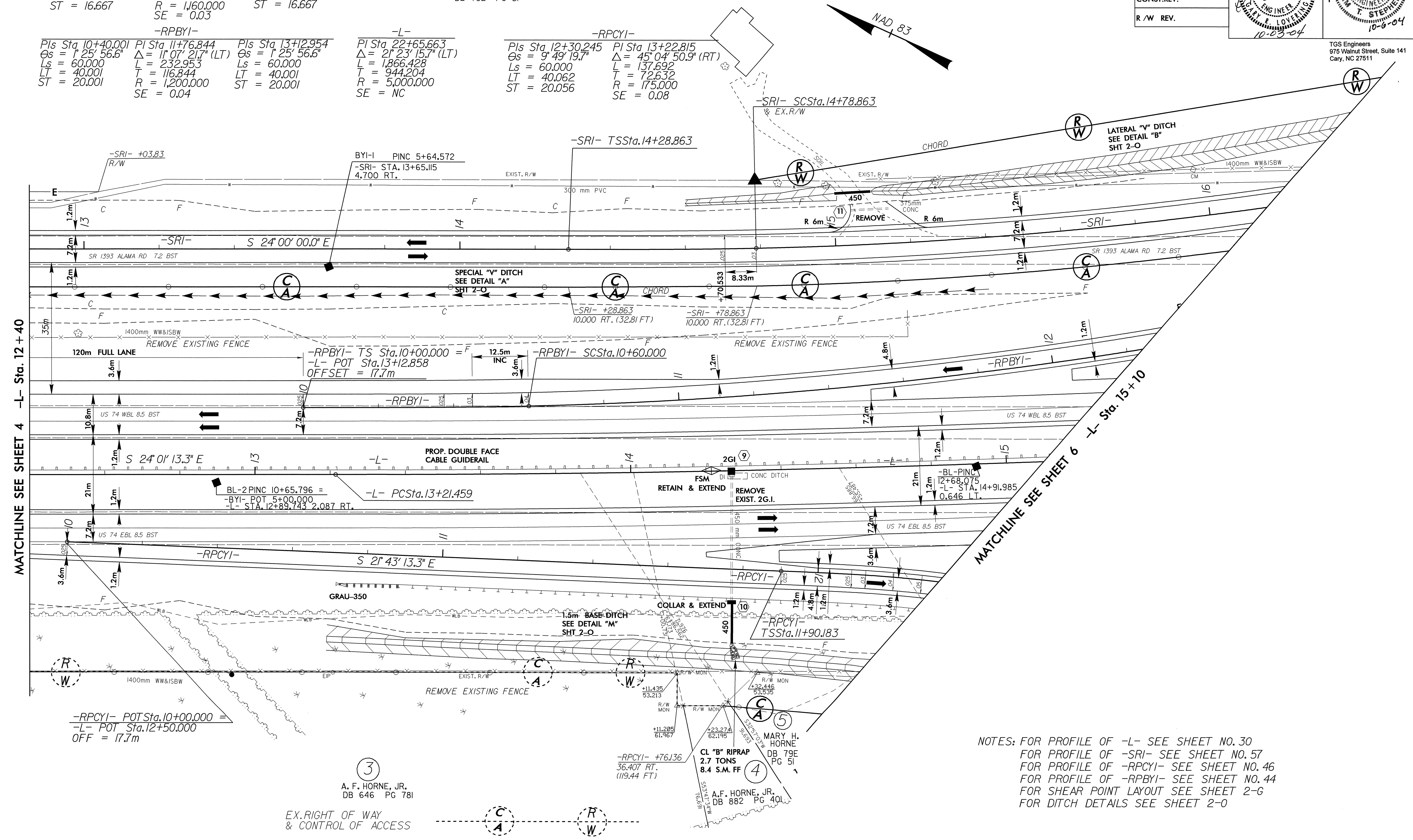
②
 MARY H. HORNE
 DB 79E PG 51

②
 MARY H. HORNE
 DB 79E PG 51

-RPBYI-
 Pls Sta 10+40.001 PI Sta 11+76.844 Pls Sta 13+12.954
 $\Theta_s = 1^\circ 25' 56.6''$ $\Delta = 1^\circ 07' 21.7''$ (LT) $\Theta_s = 1^\circ 25' 56.6''$
 $L_s = 60,000$ $L = 232,953$ $L_s = 60,000$
 $LT = 40,001$ $T = 116,844$ $LT = 40,001$
 $ST = 20,001$ $R = 1,200,000$ $ST = 20,001$
 $SE = 0.04$

-L-
 Pls Sta 22+65.663
 $\Theta_s = 2^\circ 23' 15.7''$ (LT)
 $L = 1,866,428$
 $T = 944,204$
 $R = 5,000,000$
 $SE = NC$

-RPCYI-
 Pls Sta 12+30.245 PI Sta 13+22.815
 $\Theta_s = 9^\circ 49' 19.7''$ $\Delta = 45^\circ 04' 50.9''$ (RT)
 $L_s = 60,000$ $L = 137,692$
 $LT = 40,062$ $T = 72,632$
 $ST = 20,056$ $R = 175,000$
 $SE = 0.08$



MATCHLINE SEE SHEET 4 -L- Sta. 12+40

MATCHLINE SEE SHEET 6 -L- Sta. 15+10

-RPCYI- POT Sta. 10+00.000 =
-L- POT Sta. 12+50.000
OFF = 17.7m

③
 A. F. HORNE, JR.
 DB 646 PG 781

EX. RIGHT OF WAY
 & CONTROL OF ACCESS

NOTES: FOR PROFILE OF -L- SEE SHEET NO. 30
 FOR PROFILE OF -SRI- SEE SHEET NO. 57
 FOR PROFILE OF -RPCYI- SEE SHEET NO. 46
 FOR PROFILE OF -RPBYI- SEE SHEET NO. 44
 FOR SHEAR POINT LAYOUT SEE SHEET 2-G
 FOR DITCH DETAILS SEE SHEET 2-O

8/17/03
 20 SEP 2004 13:54
 MARY H. HORNE
 DB 79E PG 51