

**METRIC**

PROJECT REFERENCE NO. R-0513A  
SHEET NO. 7

R/W SHEET NO.

ROADWAY DESIGN ENGINEER

HYDRAULICS ENGINEER

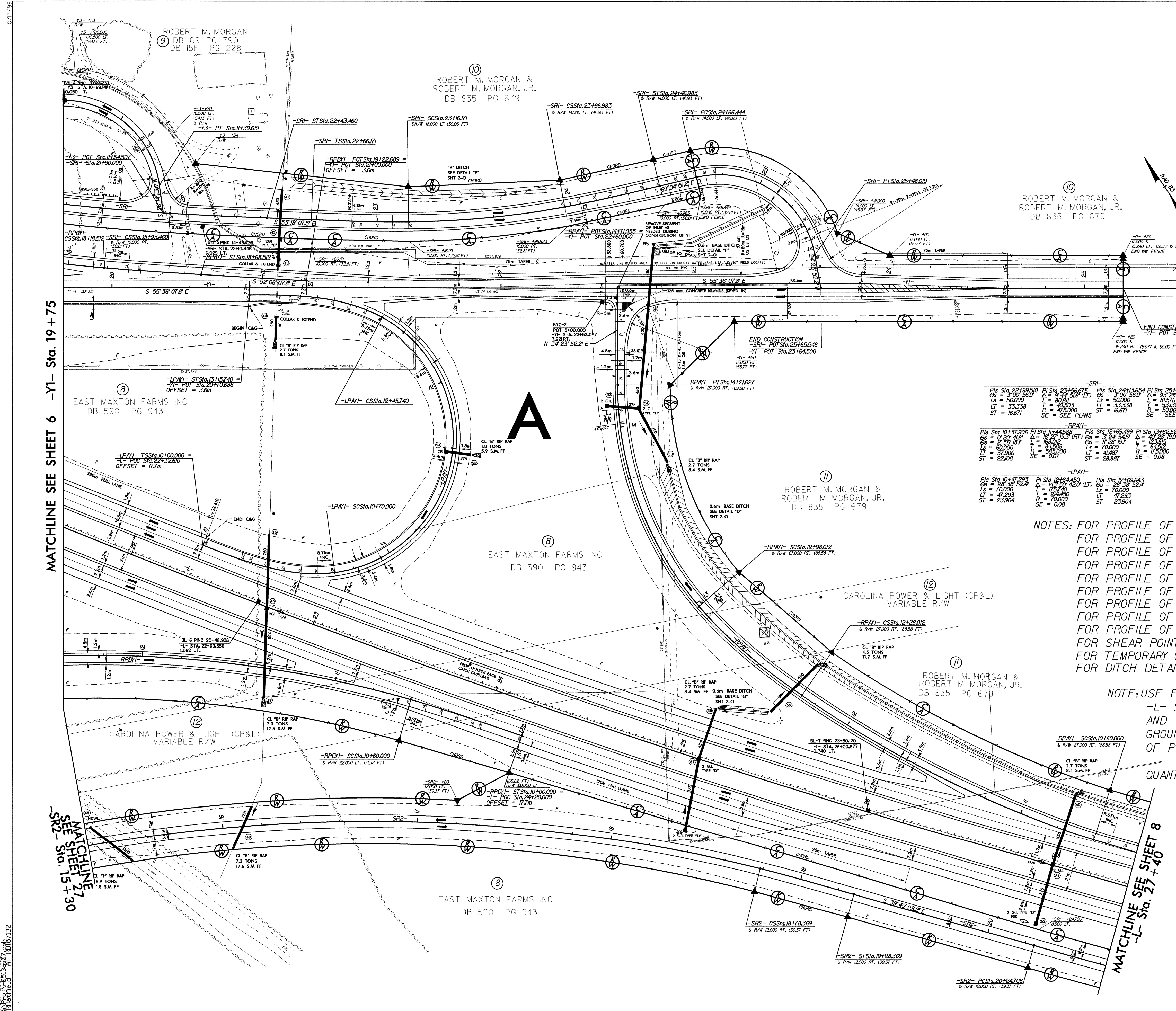
PROFESSIONAL SEAL 25873

PROFESSIONAL SEAL 20754

9-29-04

9-29-04

TGS Engineers  
975 Walnut Street, Suite 141  
Cary, NC 27511



NOTES: FOR PROFILE OF -L- SEE SHEET NO. 31 & NO. 32  
 FOR PROFILE OF -SRI- SEE SHEET NO. 58  
 FOR PROFILE OF -RPBYI- SEE SHEET NO. 45  
 FOR PROFILE OF -YI- SEE SHEET NO. 42 & NO. 43  
 FOR PROFILE OF -RPDYI- SEE SHEET NO. 47  
 FOR PROFILE OF -SR2- SEE SHEET NO. 59 & NO. 60  
 FOR PROFILE OF -LPAYI- SEE SHEET NO. 48  
 FOR PROFILE OF -RPAYI- SEE SHEET NO. 43 & NO. 44  
 FOR PROFILE OF -Y3- SEE SHEET NO. 56  
 FOR SHEAR POINT LAYOUT SEE SHEET 2-H  
 FOR TEMPORARY CROSSOVER XI SEE SHEETS 2-M & 2-N  
 FOR DITCH DETAILS SEE SHEET 2-O

NOTE: USE FABRIC FOR SOIL STABILIZATION AT  
 -L- STA 25+45 TO 27+00, -RPAYI- STA 10+60 TO 11+80  
 AND -SR2- STA 17+00 TO 18+60, PLACE ON NATURAL  
 GROUND TO A DISTANCE OF 0.6m BEYOND THE EDGE  
 OF PROPOSED PAVEMENT

QUANTITY = 4368 SM -L-  
 1248 SM -SR2-  
 1008 SM -RPAYI-

TRAFFIC VOLUMES

2004 ADT	9230	-YI- US 74 BUS	10 (10.22)
2023 ADT	20630	PM	55
-L-	7040	100	10180
	15200	100	26750
	17740	130	5320
	37000	380	5310
		2340	12230

MATCHLINE SEE SHEET 6 -YI- Sta. 19+75

MATCHLINE SEE SHEET 7 -SR2- Sta. 15+30

MATCHLINE SEE SHEET 8 -L- Sta. 27+40

DATE: 09/04/05 BY: [Signature] AT: [Signature]