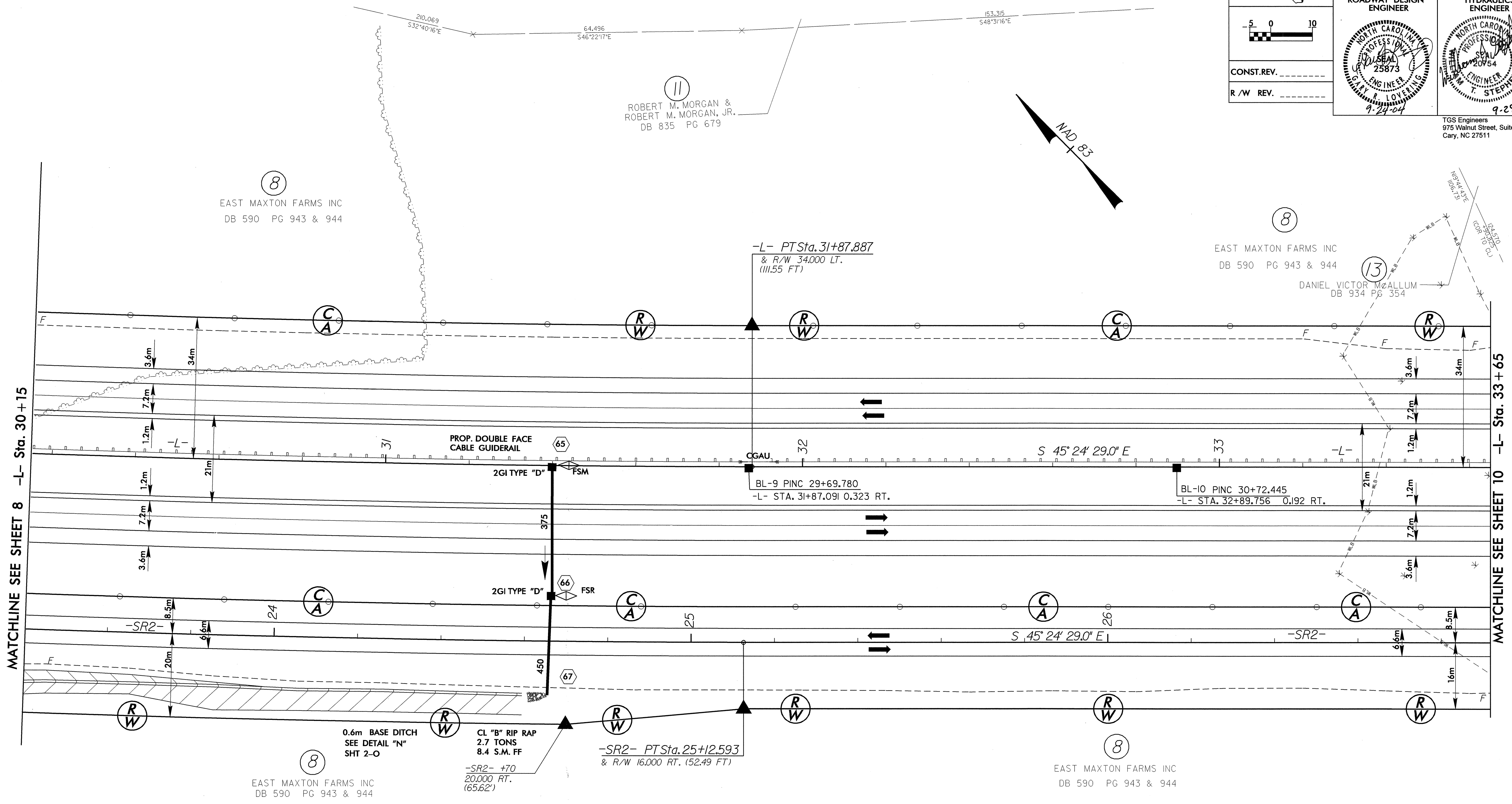


METRIC

CONST. REV. _____
R/W REV. _____

PROJECT REFERENCE NO. R-0513A	SHEET NO. 9
R/W SHEET NO.	
ROADWAY DESIGN ENGINEER 	HYDRAULICS ENGINEER

TGS Engineers
975 Walnut Street, Suite 141
Cary, NC 27511



-L-	-SR2-
PI Sta 22+65.663	PI Sta 22+68.843
$\Delta = 21' 23' 15.7''$ (LT)	$\Delta = 5' 35' 26.8''$ (LT)
L = 1,866.428	L = 487.887
T = 944.204	T = 244.137
R = 5,000,000	R = 5,000,000
SE = NC	SE = NC

NOTES: FOR PROFILE OF -L- SEE SHEET NO. 33
FOR PROFILE OF -SR2- SEE SHEET NO. 60 & NO. 61
FOR DITCH DETAILS SEE SHEET 2-0