

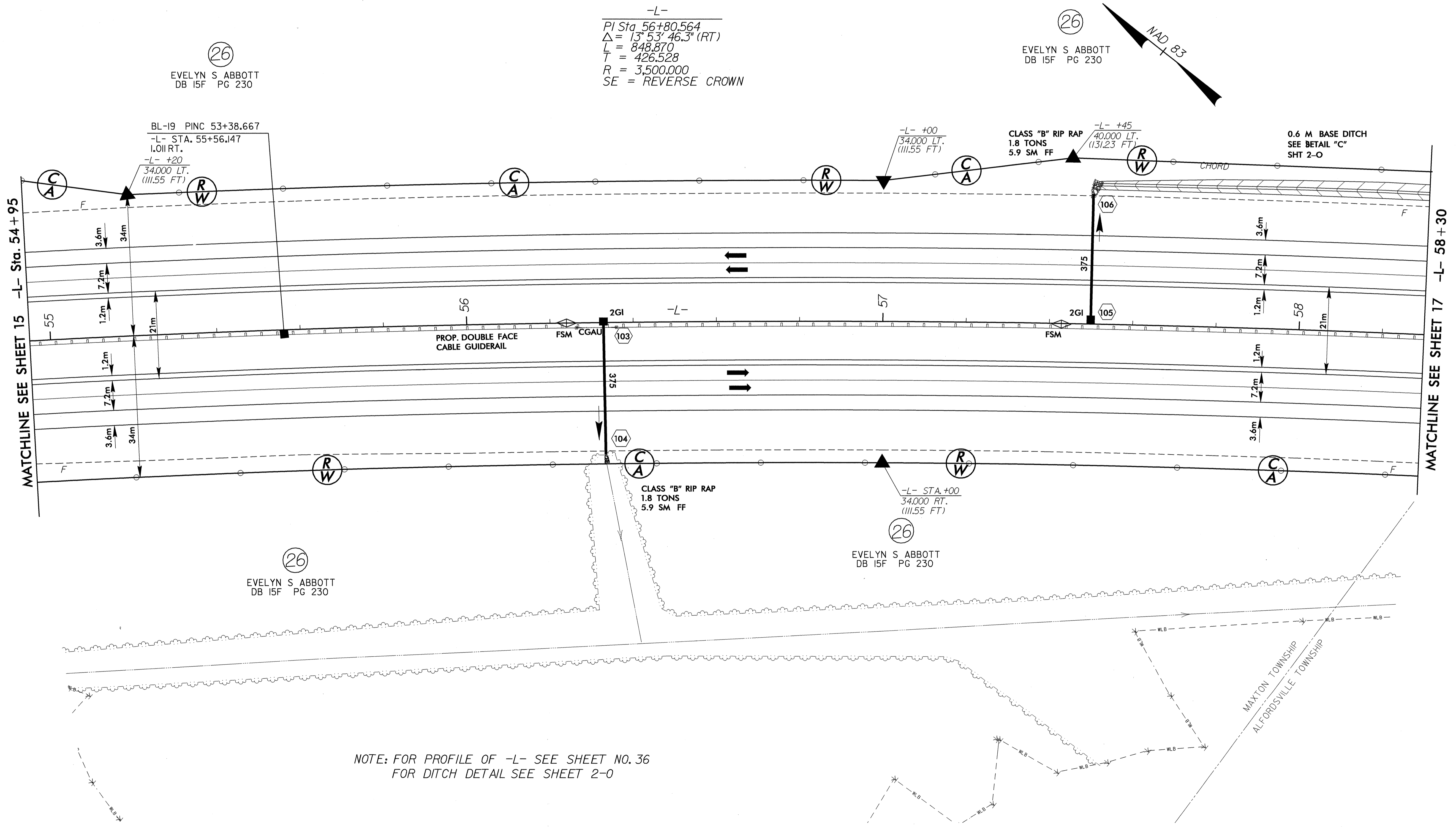
8/17/05

METRIC

CONST. REV. _____
R/W REV. _____

PROJECT REFERENCE NO. R-0513A	SHEET NO. 16
R/W SHEET NO.	
ROADWAY DESIGN ENGINEER <i>[Signature]</i> 25873	HYDRAULICS ENGINEER <i>[Signature]</i> 20754
9-21-04	9-29-04

TGS Engineers
975 Walnut Street, Suite 141
Cary, NC 27511



-L-
PI Sta 56+80.564
 $\Delta = 13^\circ 53' 46.3''$ (RT)
L = 848.870
T = 426.528
R = 3,500.000
SE = REVERSE CROWN

(26)
EVELYN S. ABBOTT
DB 15F PG 230

(26)
EVELYN S. ABBOTT
DB 15F PG 230

(26)
EVELYN S. ABBOTT
DB 15F PG 230

(26)
EVELYN S. ABBOTT
DB 15F PG 230

NOTE: FOR PROFILE OF -L- SEE SHEET NO. 36
FOR DITCH DETAIL SEE SHEET 2-0

08-JUL-2004 15:06
C:\PC\A\951\951.dwg
Maccah AT 10187165