

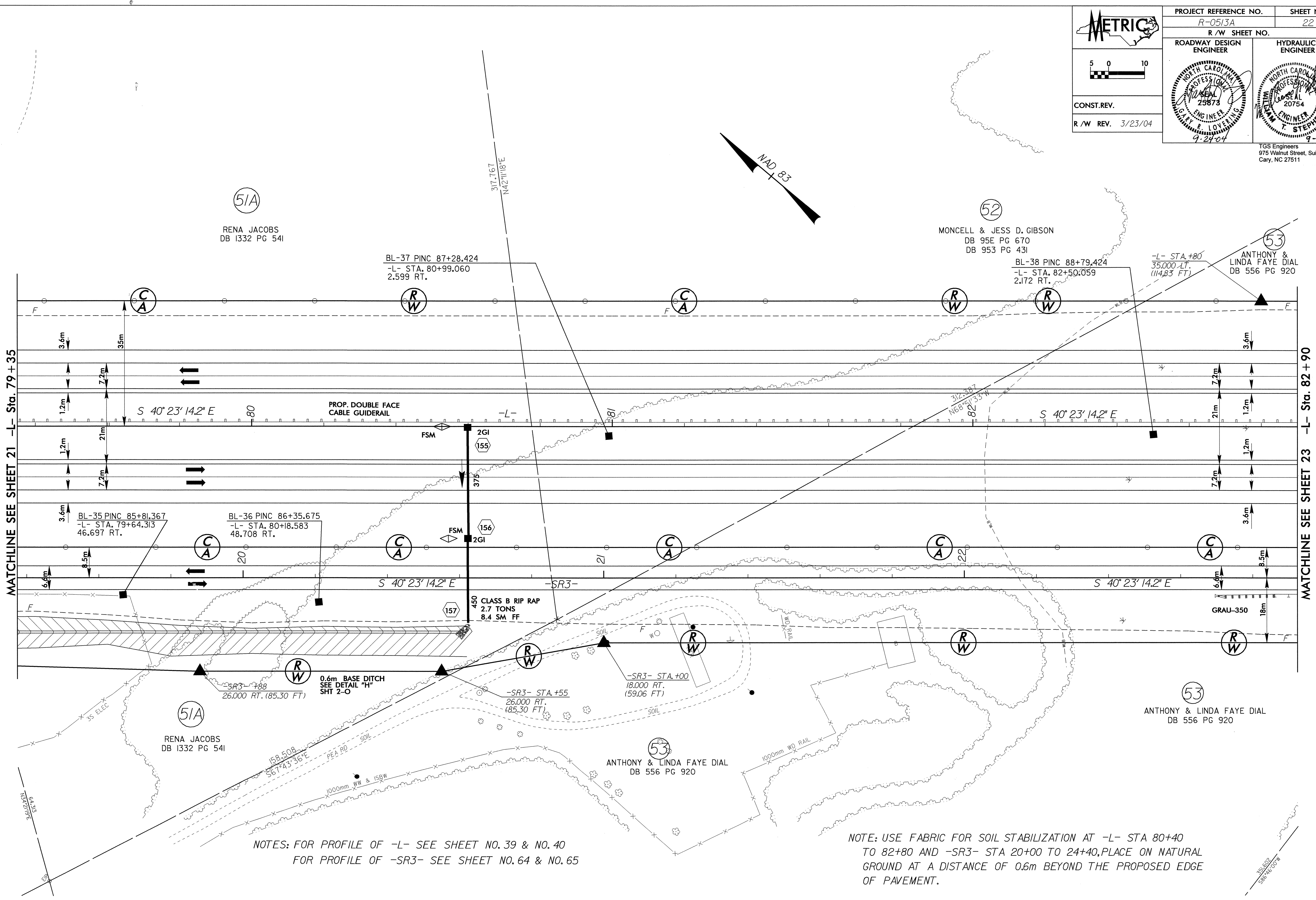
**METRIC**

CONST. REV.

R/W REV. 3/23/04

PROJECT REFERENCE NO. R-0513A	SHEET NO. 22
R/W SHEET NO.	
ROADWAY DESIGN ENGINEER	HYDRAULICS ENGINEER

TGS Engineers  
875 Walnut Street, Suite 141  
Cary, NC 27511



MATCHLINE SEE SHEET 21 -L- Sta. 79 + 35

MATCHLINE SEE SHEET 23 -L- Sta. 82 + 90

NOTES: FOR PROFILE OF -L- SEE SHEET NO. 39 & NO. 40  
FOR PROFILE OF -SR3- SEE SHEET NO. 64 & NO. 65

NOTE: USE FABRIC FOR SOIL STABILIZATION AT -L- STA 80+40 TO 82+80 AND -SR3- STA 20+00 TO 24+40, PLACE ON NATURAL GROUND AT A DISTANCE OF 0.6m BEYOND THE PROPOSED EDGE OF PAVEMENT.

QUANTITY = 6336 S.M. -L-  
3432 S.M. -SR3-

8/17/05  
85-AUG-2005 14:44  
C:\AUG-2005\1444\1444.dwg  
R:\R01866297