
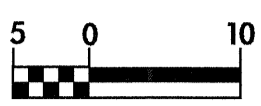
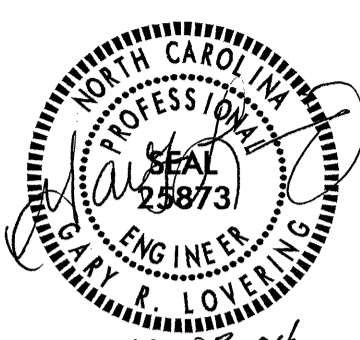
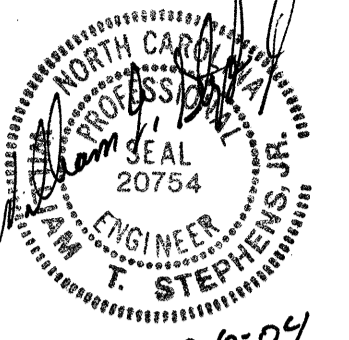
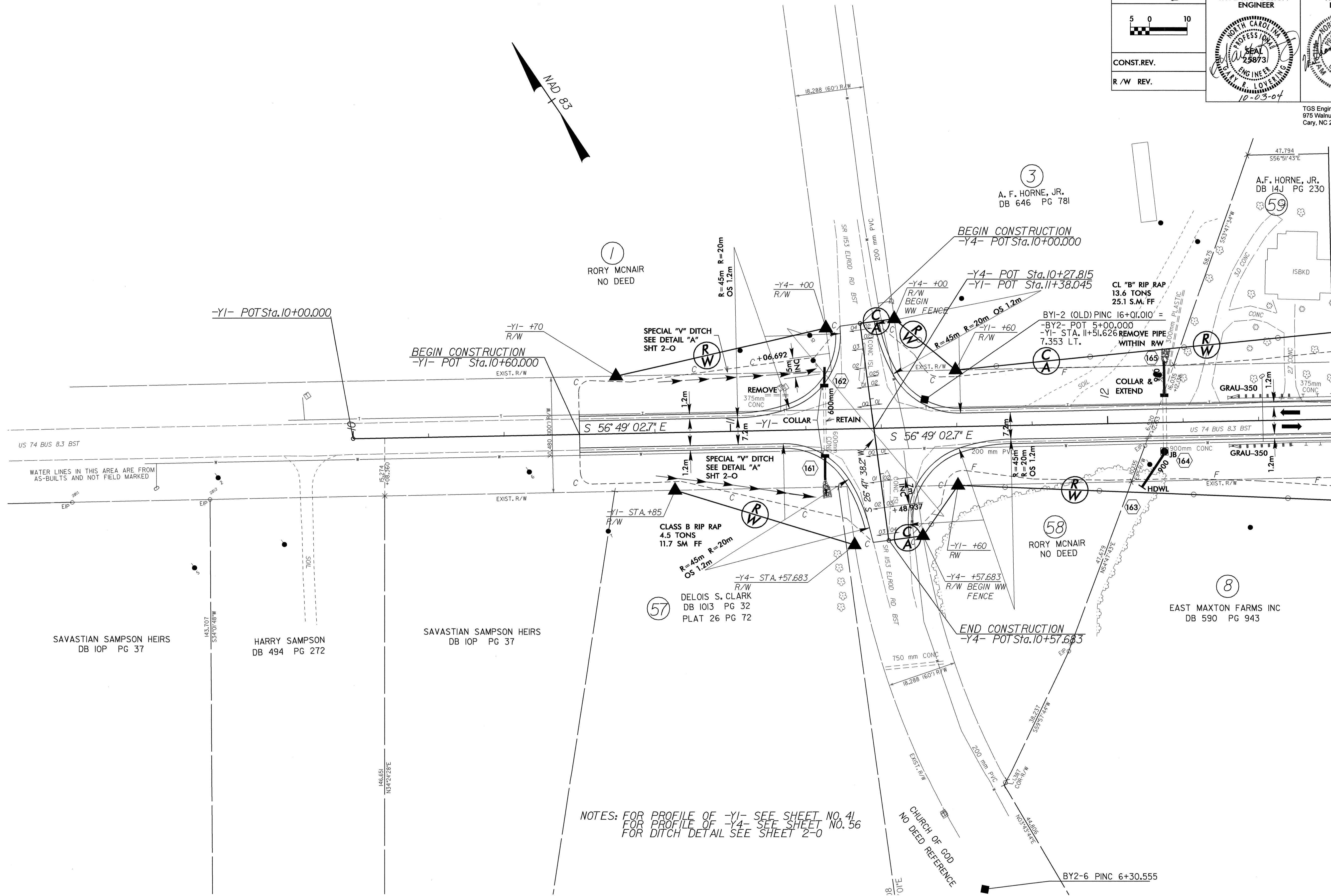


8/17/03

 	PROJECT REFERENCE NO. R-0513A	SHEET NO. 25
	R/W SHEET NO.	
CONST. REV.	ROADWAY DESIGN ENGINEER	HYDRAULICS ENGINEER
R/W REV.		

TGS Engineers
975 Walnut Street, Suite 141
Cary, NC 27511



US 74 BUS 8.3 BST

WATER LINES IN THIS AREA ARE FROM AS-BUILTS AND NOT FIELD MARKED

SAVASTIAN SAMPSON HEIRS
DB IOP PG 37

HARRY SAMPSON
DB 494 PG 272

SAVASTIAN SAMPSON HEIRS
DB IOP PG 37

DELOIS S. CLARK
DB 1013 PG 32
PLAT 26 PG 72

RORY MCNAIR
NO DEED

EAST MAXTON FARMS INC
DB 590 PG 943

A. F. HORNE, JR.
DB 646 PG 781

A. F. HORNE, JR.
DB 14J PG 230

NOTES: FOR PROFILE OF -Y1- SEE SHEET NO. 41
FOR PROFILE OF -Y4- SEE SHEET NO. 56
FOR DITCH DETAIL SEE SHEET 2-0

MATCHLINE SEE SHEET 6 -Y1- Sta. 12 + 60

30-SEP-2004 14:15
mduval