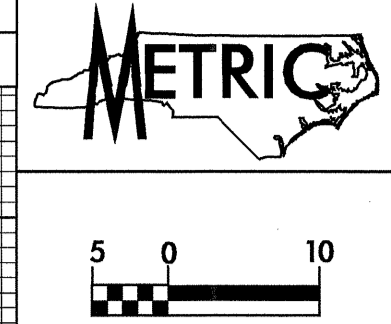


5/09/08

DITCH LEGEND
LEFT DITCH



PROJECT REFERENCE NO. R-0513A SHEET NO. 39

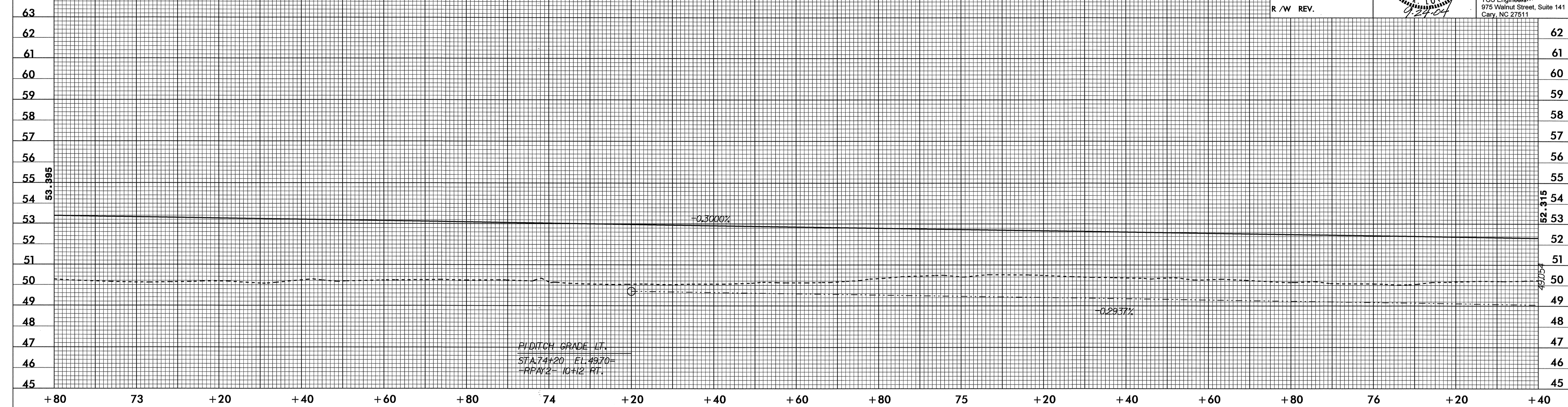
ROADWAY DESIGN ENGINEER

HYDRAULICS ENGINEER

CONST. REV.

R / W REV.

TGS Engineers
975 Walnut Street, Suite 141
Cary, NC 27511

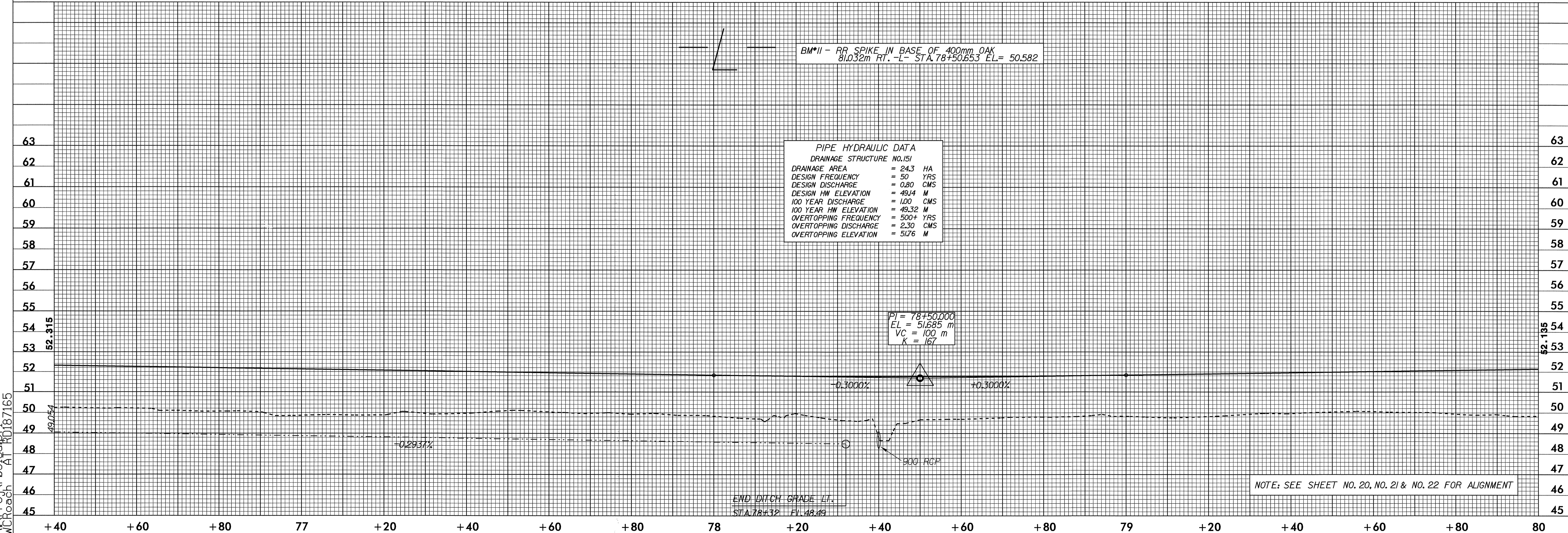


PI DITCH GRADE LT.
STA. 74+20 EL. 49.70
-RPA/2= 10+12 FT.

BM*II - RR SPIKE IN BASE OF 400mm OAK
81.032m RT. -L- STA. 78+50.653 EL= 50.582

PIPE HYDRAULIC DATA
DRAINAGE STRUCTURE NO. 151

DRAINAGE AREA	= 24.3 HA
DESIGN FREQUENCY	= 50 YRS
DESIGN DISCHARGE	= 0.80 CMS
DESIGN HW ELEVATION	= 49.4 M
100 YEAR DISCHARGE	= 1.00 CMS
100 YEAR HW ELEVATION	= 49.32 M
OVERTOPPING FREQUENCY	= 500+ YRS
OVERTOPPING DISCHARGE	= 2.30 CMS
OVERTOPPING ELEVATION	= 51.76 M



END DITCH GRADE LT.
STA. 78+32 EL. 48.49

NOTE: SEE SHEET NO. 20, NO. 21 & NO. 22 FOR ALIGNMENT

08-JUL-2004 14:53
R:\proj\0513\01\1
M:\rooch AT RD187165