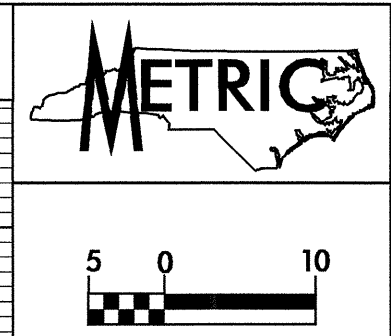


6/29/04

-SRI-

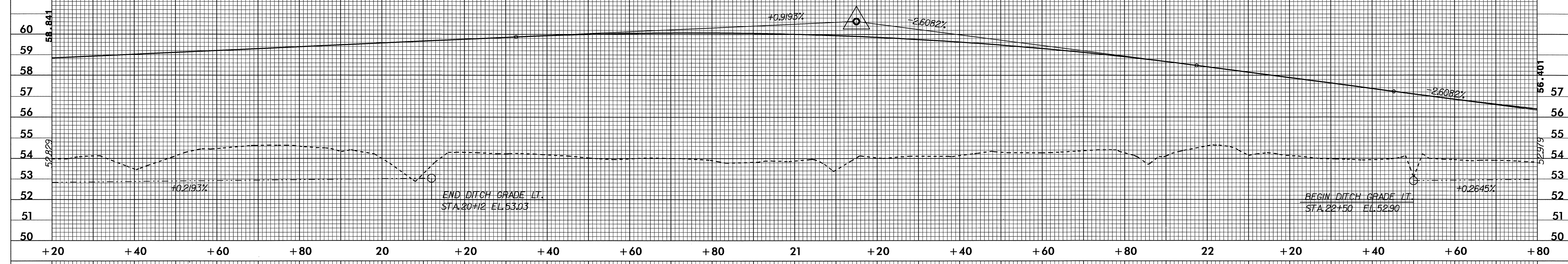
LEFT DITCH DITCH LEGEND



PROJECT REFERENCE NO. R-0513A	SHEET NO. 58
ROADWAY DESIGN ENGINEER	HYDRAULICS ENGINEER
TGS Engineers 975 Walnut Street, Suite 141 Cary, NC 27511	

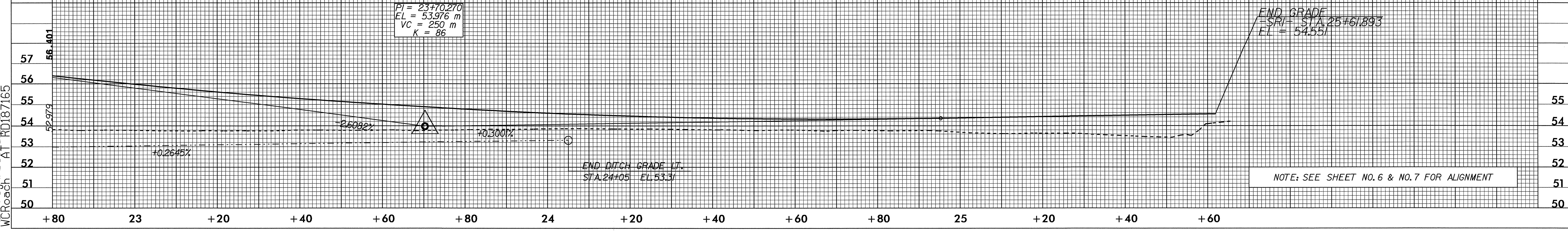
CONST. REV.  
R /W REV.

PI = 21+15.000  
EL = 60.634 m  
VC = 165 m  
K = 47



-SRI-

PI = 23+70.270  
EL = 53.976 m  
VC = 250 m  
K = 86



NOTE: SEE SHEET NO. 6 & NO. 7 FOR ALIGNMENT

08-JUL-2004 14:01  
R:\proj\0513a\13a.dwg  
M:\roach A1 R0187165