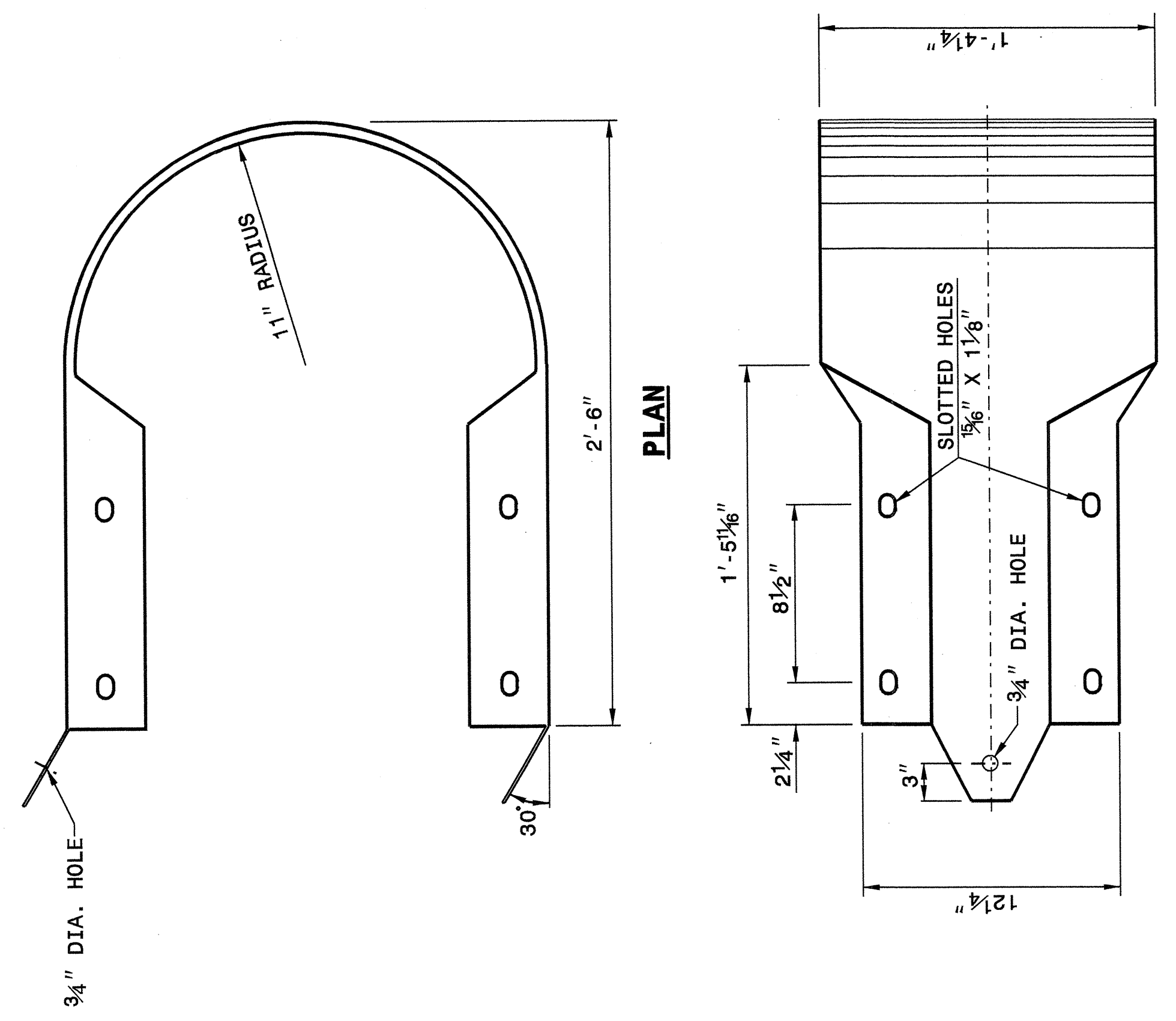


STATE OF NORTH CAROLINA
DEPT. OF TRANSPORTATION
DIVISION OF HIGHWAYS
RALEIGH, N.C.

ENGLISH DETAIL DRAWING FOR
GUARDRAIL INSTALLATION

SHEET 7 OF 7
862D02

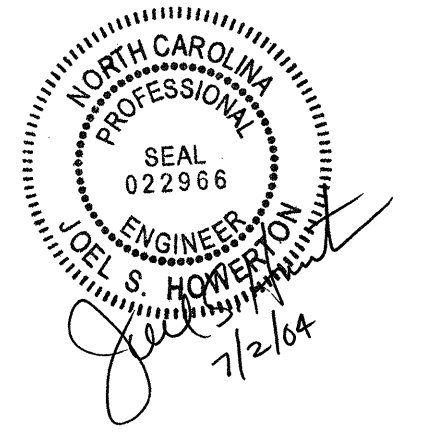


ELEVATION
BUFFERED END SECTION

STATE OF NORTH CAROLINA
DEPT. OF TRANSPORTATION
DIVISION OF HIGHWAYS
RALEIGH, N.C.

ENGLISH DETAIL DRAWING FOR
GUARDRAIL INSTALLATION

SHEET 7 OF 7
862D02



**DESIGN SERVICES UNIT
STANDARDS AND SPECIAL DESIGN**
Office 919-250-4128 FAX 919-250-4119

SEE PLATE FOR TITLE

ORIGINAL BY: 2002 STD. 862.02 DATE: _____
 MODIFIED BY: E. E. WARD DATE: 02-09-03
 CHECKED BY: J. S. HOWERTON DATE: 4-29-04
 FILE SPEC.: /usr/stds/02todetail/eng1ish/86202/862d02.dgn

29-APR-2004 11:01
 W:\Special Detail\stds\stds\02\Stds to Special Details\english\86202\0862d02.dgn
 Standard AT 05212260
 5/14/99