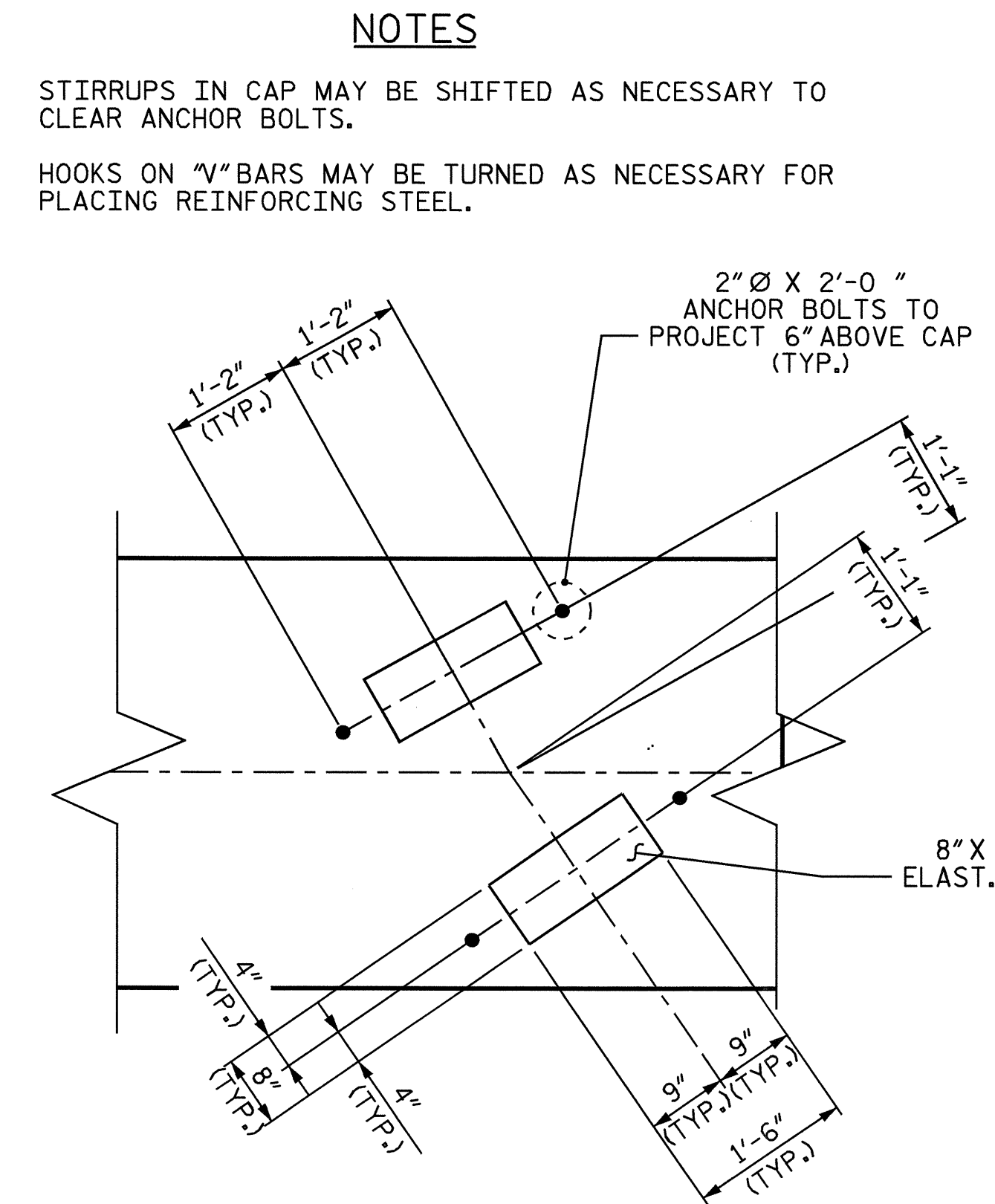


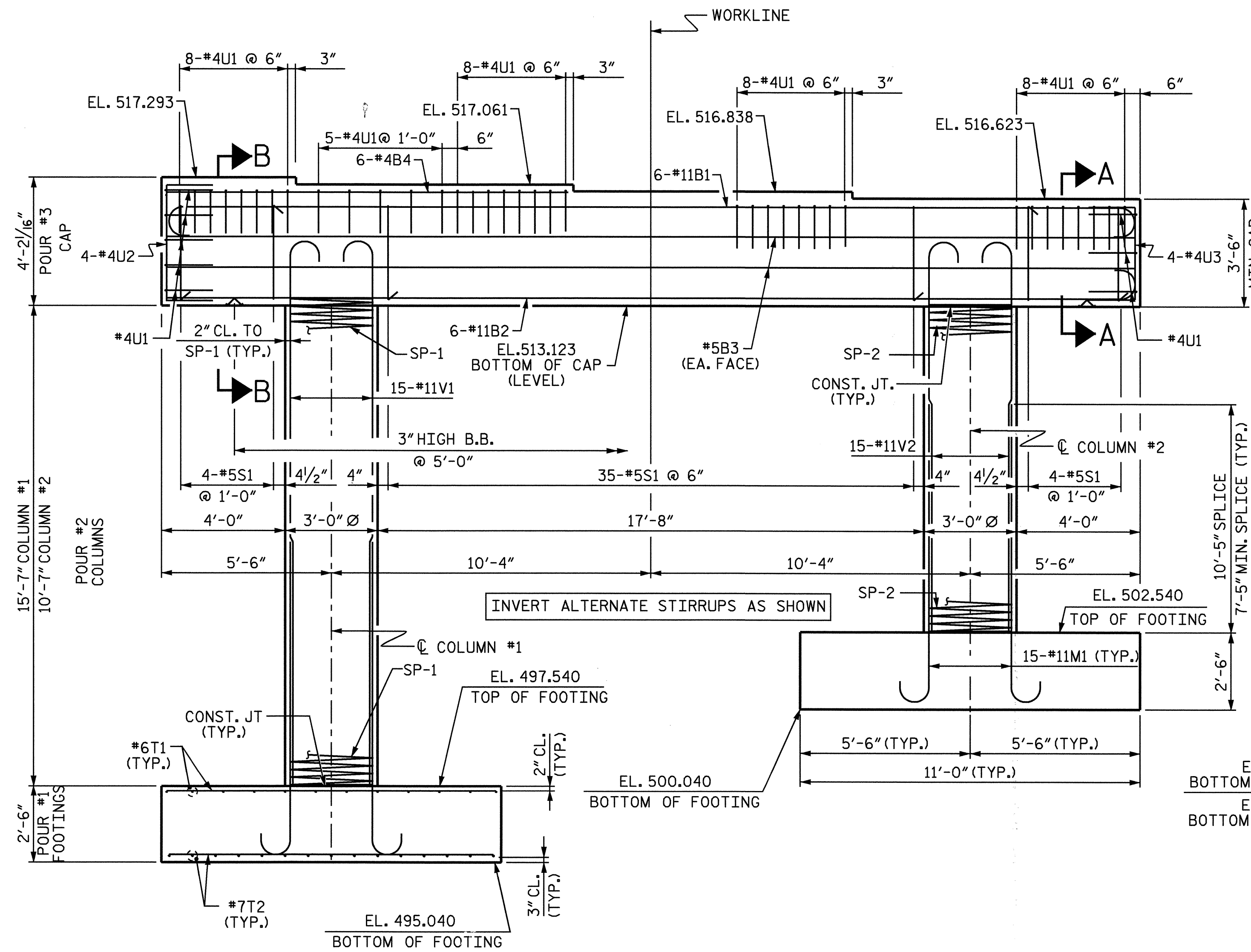
PLAN OF CAP

SPAN "C"

SPAN "B"

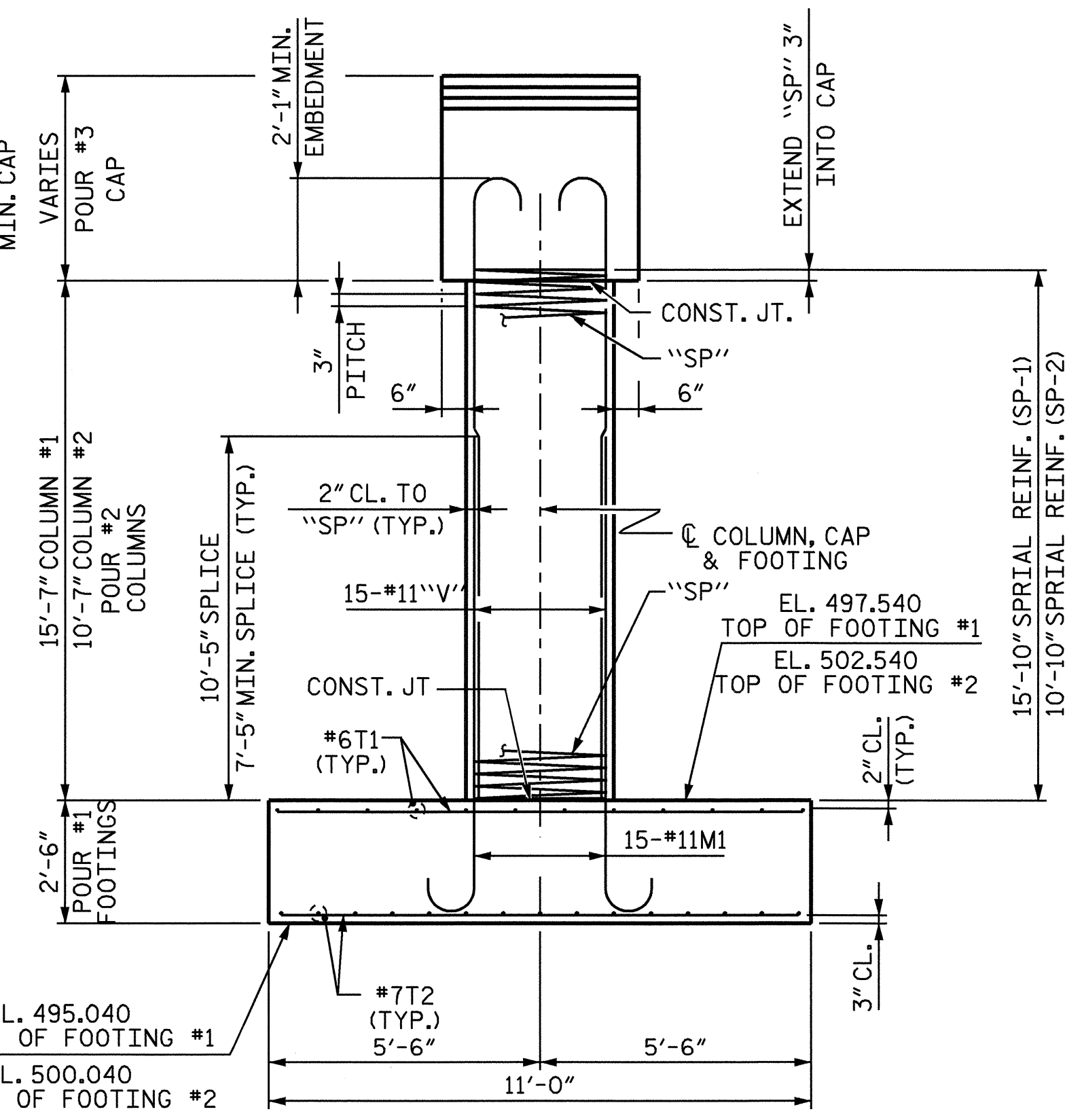


DETAIL A



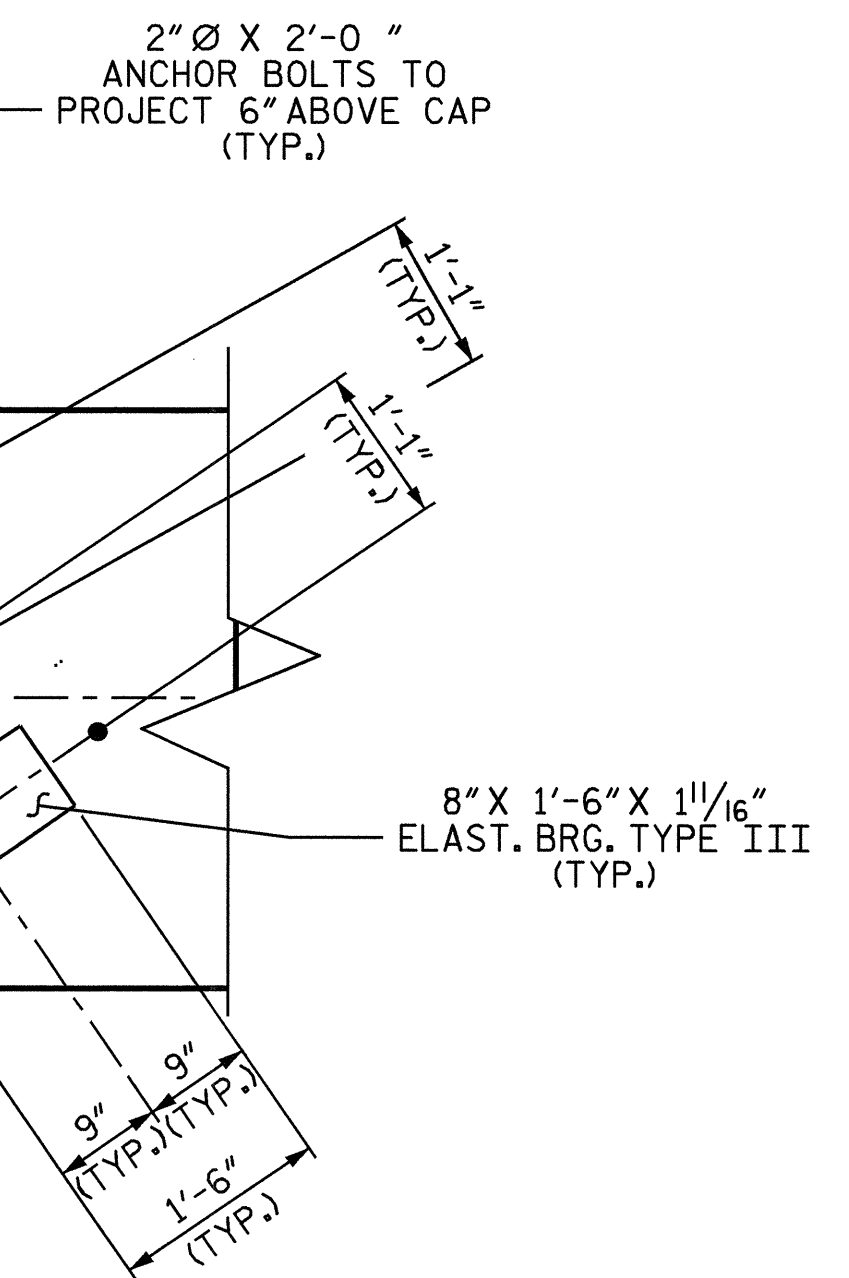
ELEVATION

(FOOTINGS ARE IDENTICAL)



RIGHT END ELEVATION

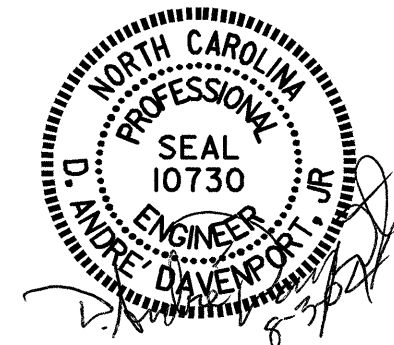
NOTES
 STIRRUPS IN CAP MAY BE SHIFTED AS NECESSARY TO CLEAR ANCHOR BOLTS.
 HOOKS ON "V" BARS MAY BE TURNED AS NECESSARY FOR PLACING REINFORCING STEEL.



PROJECT NO. B-3506
 RANDOLPH COUNTY
 STATION: 17+97.50-L-

SHEET 1 OF 2

STATE OF NORTH CAROLINA DEPARTMENT OF TRANSPORTATION RALEIGH					
SUBSTRUCTURE BENT #2					
REVISIONS					SHEET NO.
NO.	BY:	DATE:	NO.	BY:	DATE:
1			3		
2			4		
					TOTAL SHEETS
					35



DRAWN BY: H. T. BARBOUR DATE: 4-13-04
 CHECKED BY: D. A. DAVENPORT DATE: 4-04

03-AUG-2004 12:28
 w:\squad\lb3506\tbarbour\Microstation\B-3506.sd.B*.01.dgn
 ddavenport

STR. #1 NC006