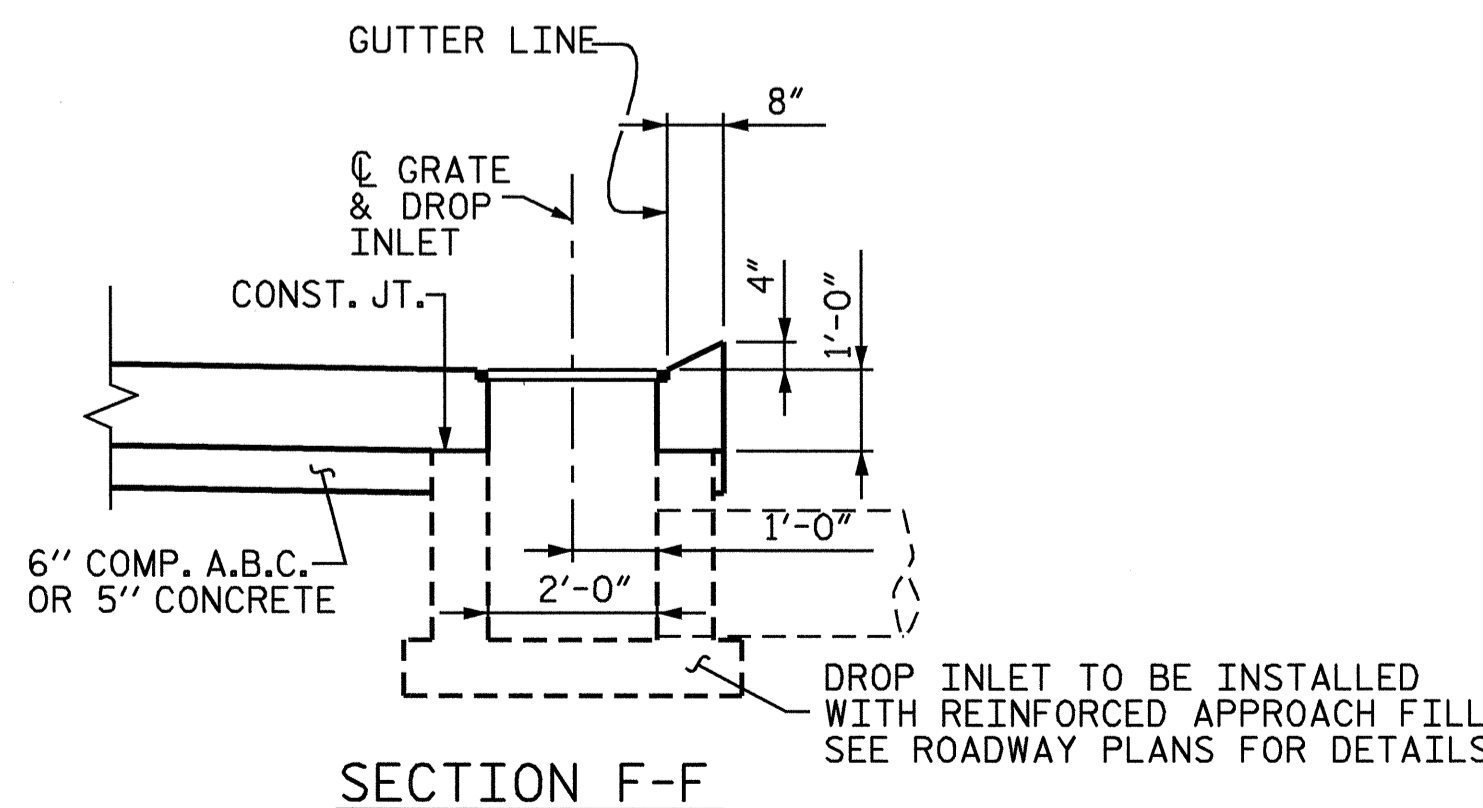
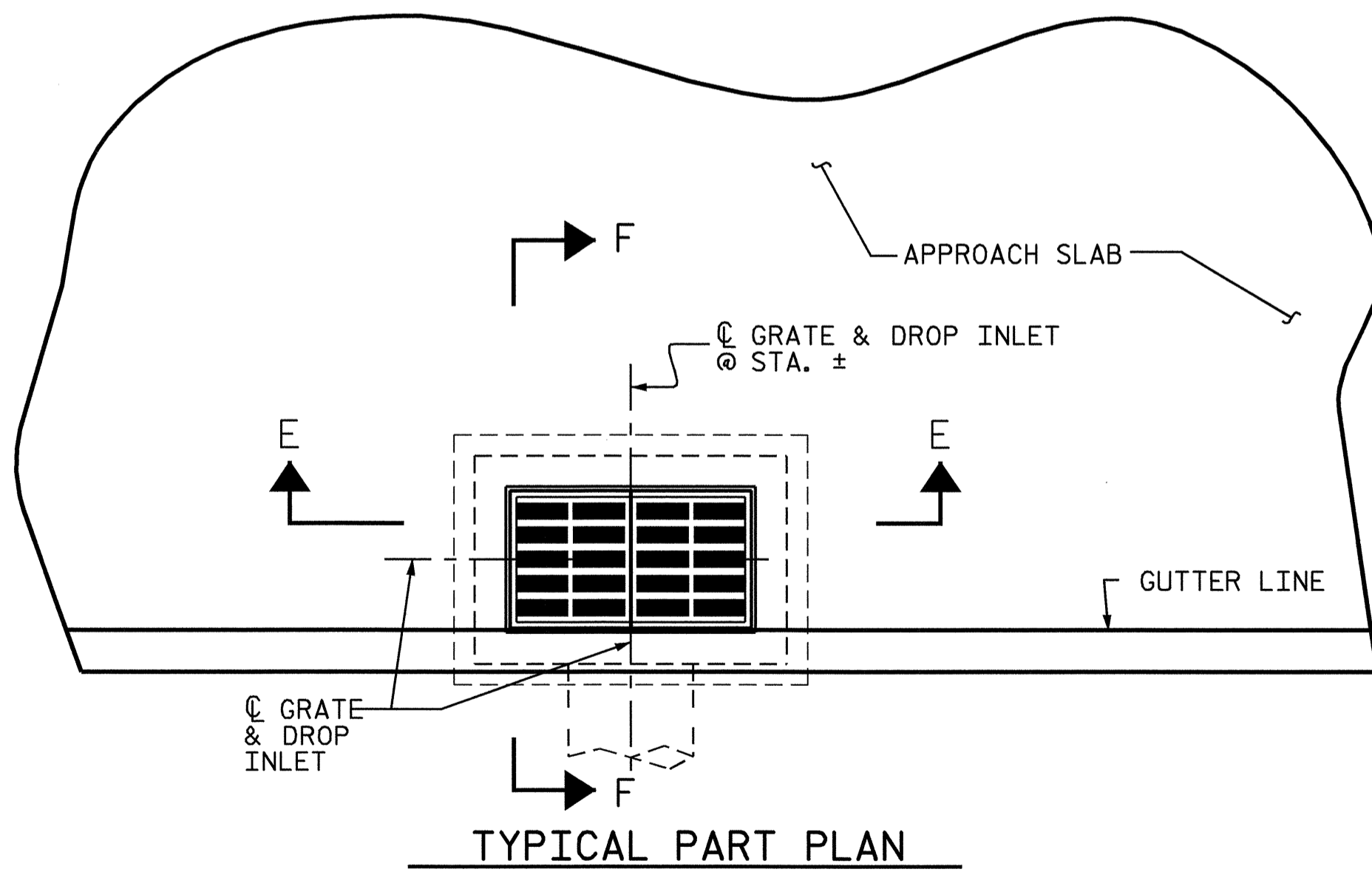
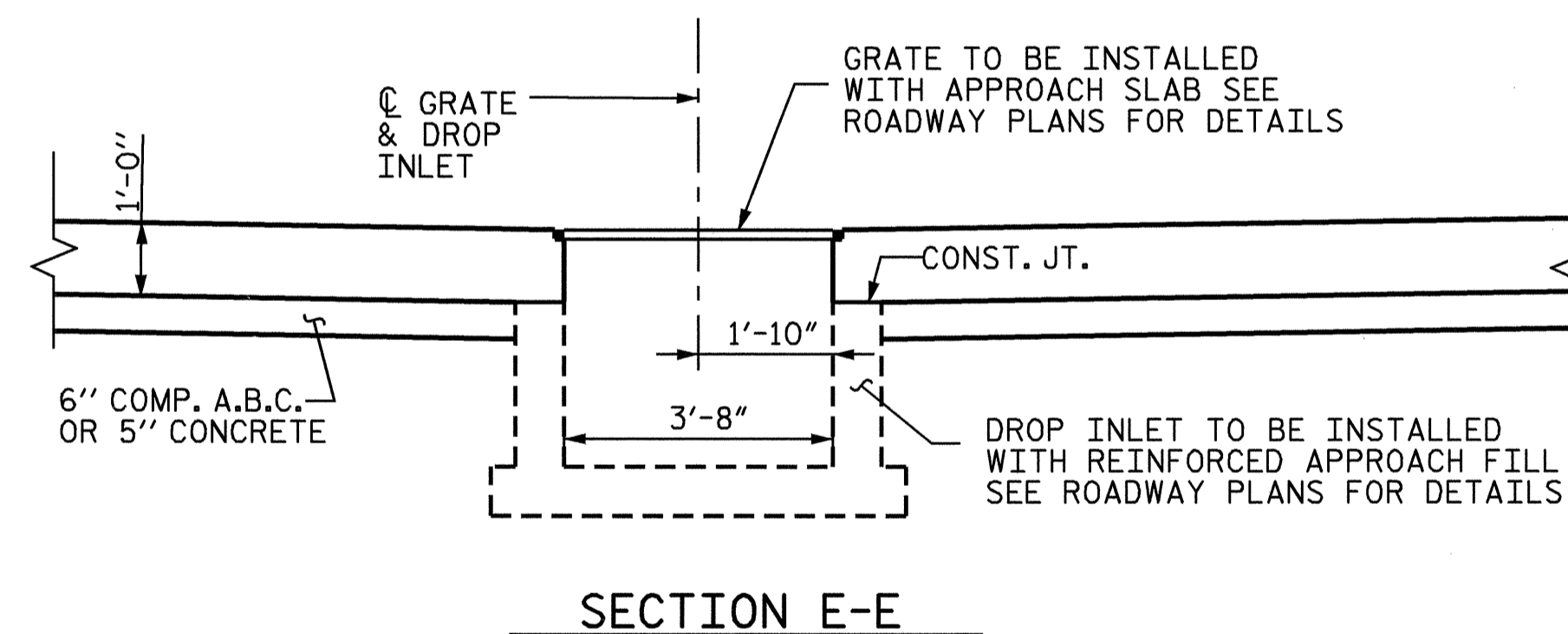
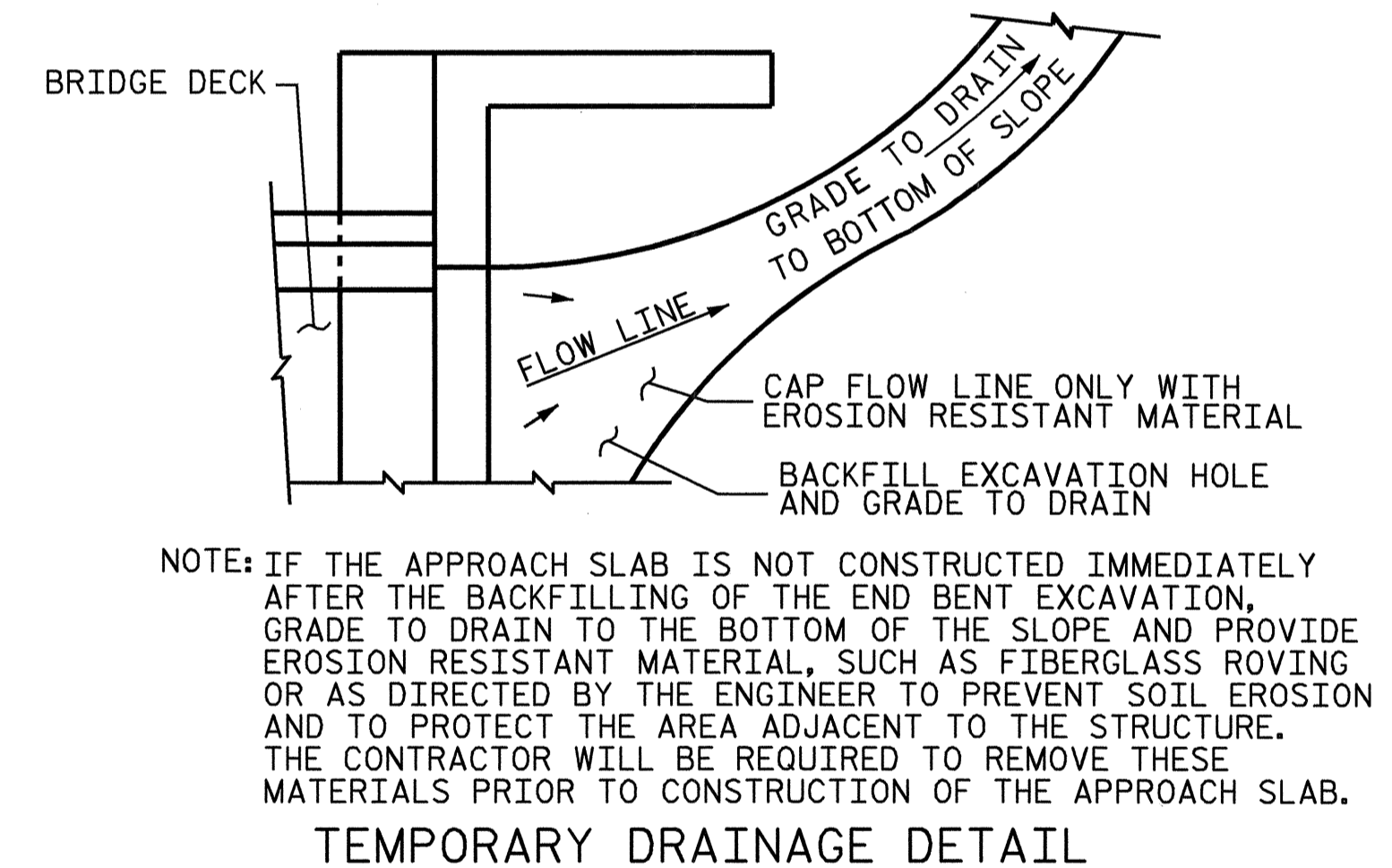


TEMPORARY BERM AND SLOPE DRAIN DETAILS



PROJECT NO. B-3506
 RANDOLPH COUNTY
 STATION: 17+97.50-L-

SHEET 3 OF 3

STATE OF NORTH CAROLINA DEPARTMENT OF TRANSPORTATION RALEIGH					
BRIDGE APPROACH SLAB DETAILS					
REVISIONS					
NO.	BY:	DATE:	NO.	BY:	DATE:
1			3		
2			4		
SHEET NO. S-35A					TOTAL SHEETS 35

ASSEMBLED BY : H. T. BARBOUR DATE : 4-7-04
 CHECKED BY : D. A. DAVENPORT DATE : 4-04
 DRAWN BY : FCJ 11/88 REV. 8/16/99 MAB/LES
 CHECKED BY : ARB 11/88 REV. 10/17/00 RWW/LES
 REV. 5/7/03 RWW/JTE



STR.#1 STD. NO. BAS10