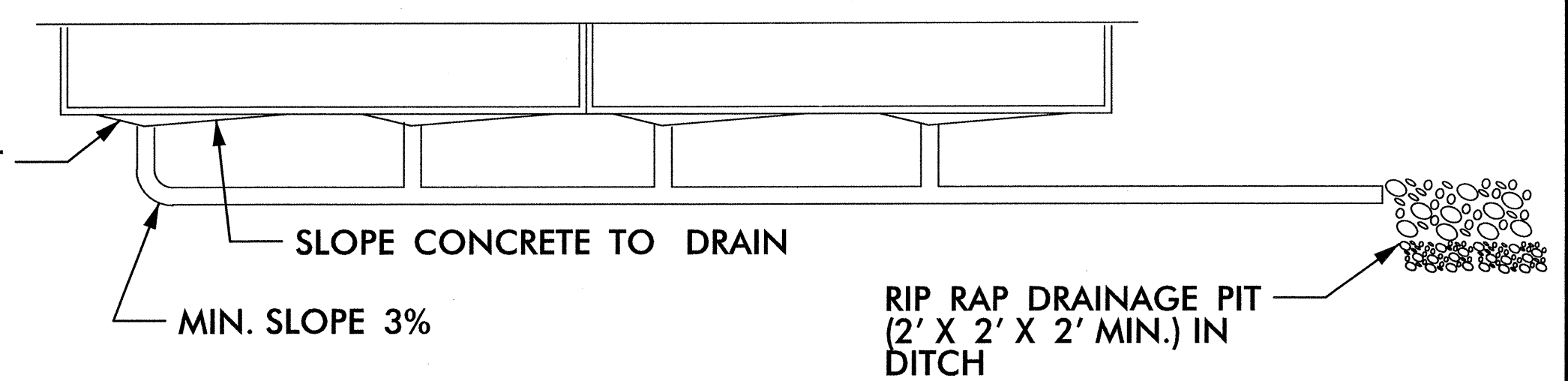
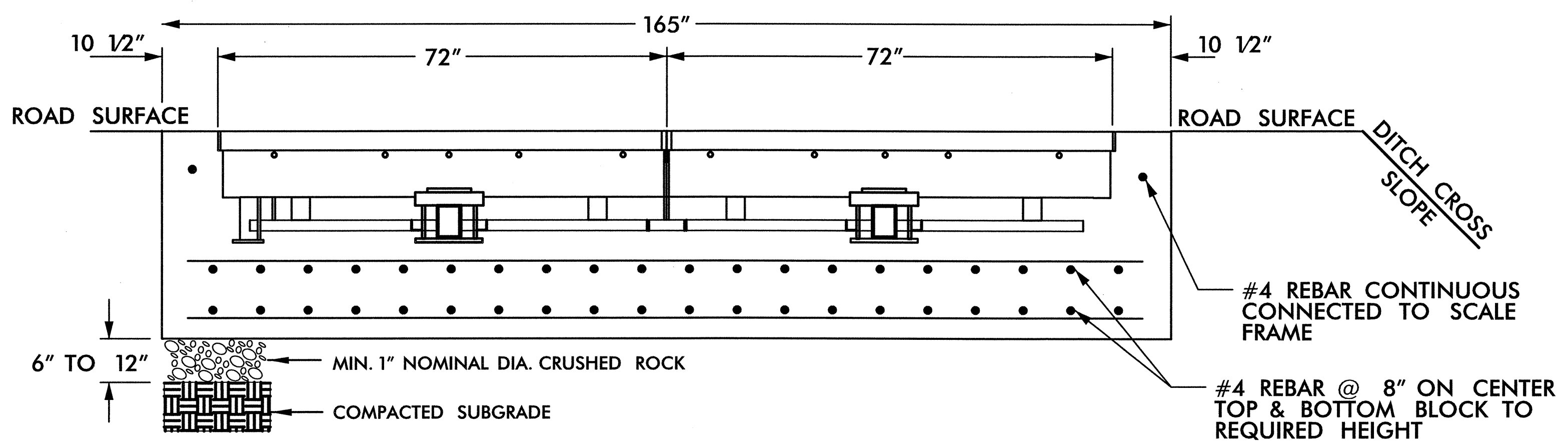


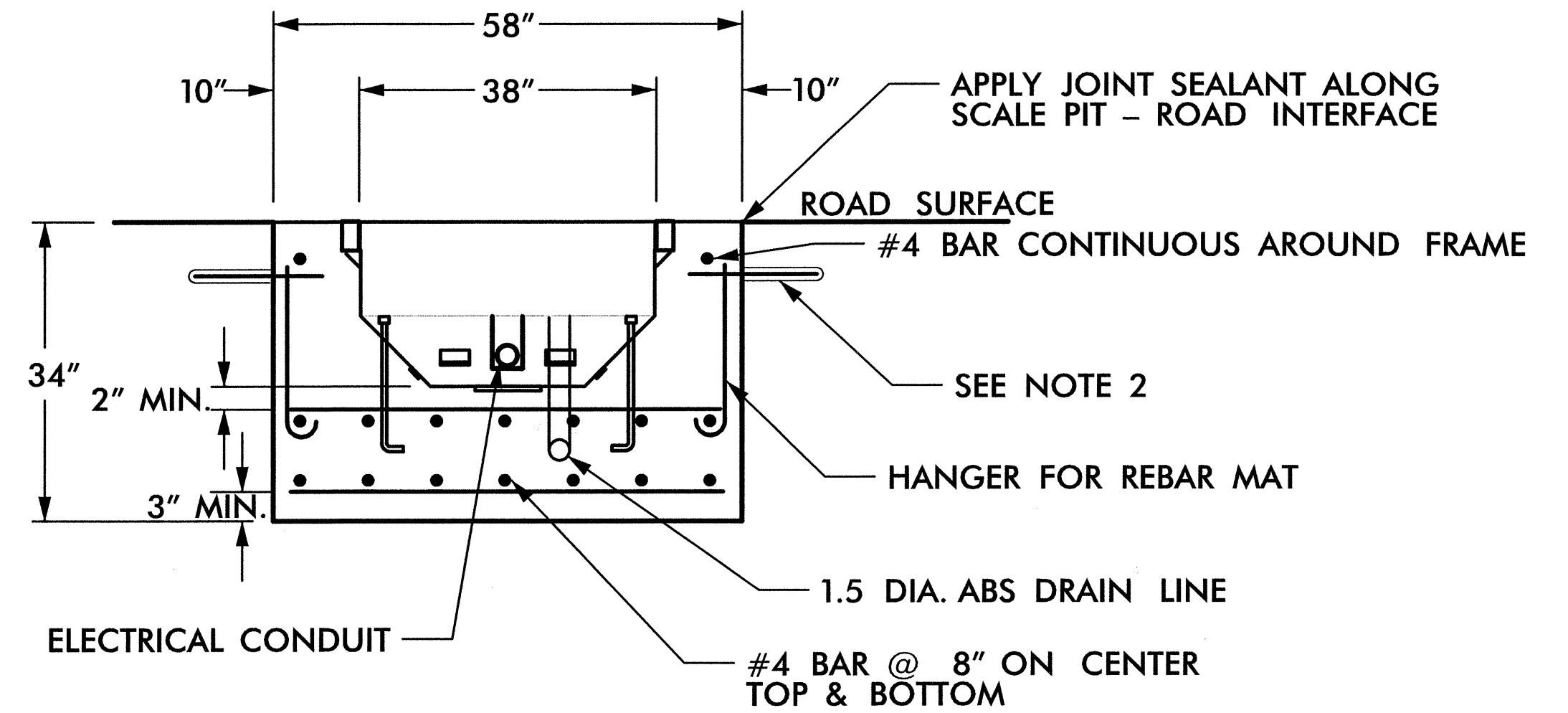
SCALE DETAIL



DRAIN DETAIL



SIDE VIEW (DRAIN AND J-BARS OMITTED FOR CLARITY)



END VIEW

**NOTES:**

1. REINFORCEMENTS AS SHOWN ARE MINIMUM REQUIREMENTS.
2. INSTALL 1 1/2" DIA. X 16" EPOXY COATED DOWELS IN 1 3/4" DIA. X 8" DEEP HOLE @ 16" ON CENTER SECURE DOWEL INTO HOLE WITH EPOXY. ENSURE DOWELS ARE EXACTLY 90° TO LONGITUDINAL PAVEMENT DIRECTION BOTH VERTICALLY AND HORIZONTALLY.
3. THE INFORMATION SHOWN ON THIS SHEET IS BASED ON THE INTERNATIONAL ROAD DYNAMICS (IRD) SINGLE LOAD CELL SCALE AS IDENTIFIED IN THE SPECIAL PROVISIONS AND SHALL NOT BE USED TO FABRICATE OR RE-ENGINEER THE SCALE WITHOUT WRITTEN PERMISSION FROM IRD. AS IDENTIFIED IN THE SPECIAL PROVISIONS, THE CONTRACTOR MAY PROVIDE A FUNCTIONALLY EQUIVALENT ALTERNATIVE, COMPATIBLE WITH EXISTING EQUIPMENT.
4. INSTALL TWO GROUND RODS IN SCALE PIT, ONE EACH IN DIAGONALLY OPPOSING CORNERS. EXOTHERMICALLY WELD #4 AWG SOLID BARE COPPER WIRE TO GROUND RODS AND SCALE FRAME.

**HNTB** HNTB NORTH CAROLINA, P.C.  
343 E. Six Forks Road, Suite 200  
Raleigh, North Carolina 27609

	<b>SINGLE LOAD CELL SCALE REINFORCING AND DRAIN INSTALLATION DETAIL</b>							
	DIVISION 07 ORANGE COUNTY HILLSBOROUGH PLAN DATE: OCTOBER 2003 REVIEWED BY: E.T. GARRETT PREPARED BY: E.T. GARRETT REVIEWED BY: H.L. WINSTEAD	<table border="1"> <tr> <th>REVISIONS</th> <th>INIT.</th> <th>DATE</th> </tr> <tr> <td> </td> <td> </td> <td> </td> </tr> </table>		REVISIONS	INIT.	DATE		
REVISIONS	INIT.	DATE						
Signature: <i>[Signature]</i> DATE: 9/27/04 CADD FILE NAME: tms-23A.dgn			SEAL NORTH CAROLINA PROFESSIONAL ENGINEER HILVEY L. WINSTEAD No. 07983					