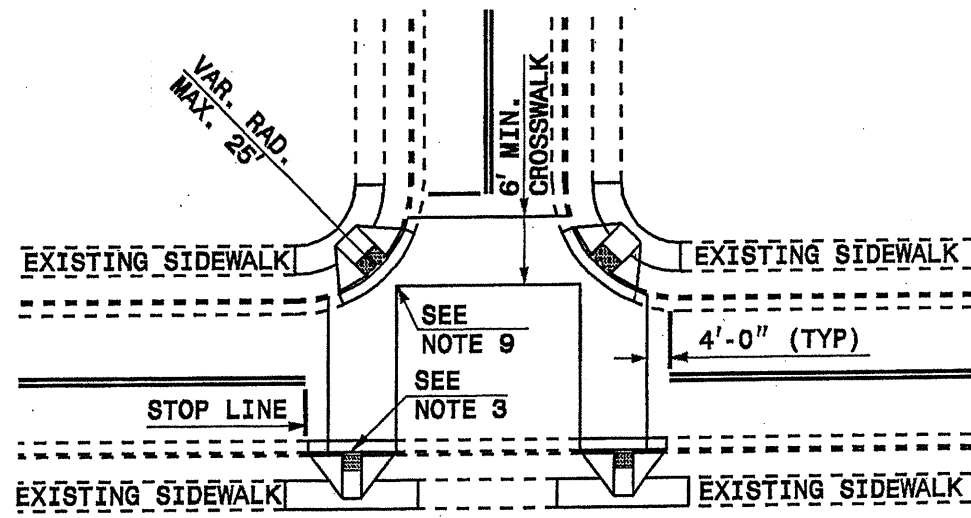


STATE	PROJECT NO.	SHEET NO.	TOTAL SHEETS
N.C.	7CR.10681.3, ETC.	18	20

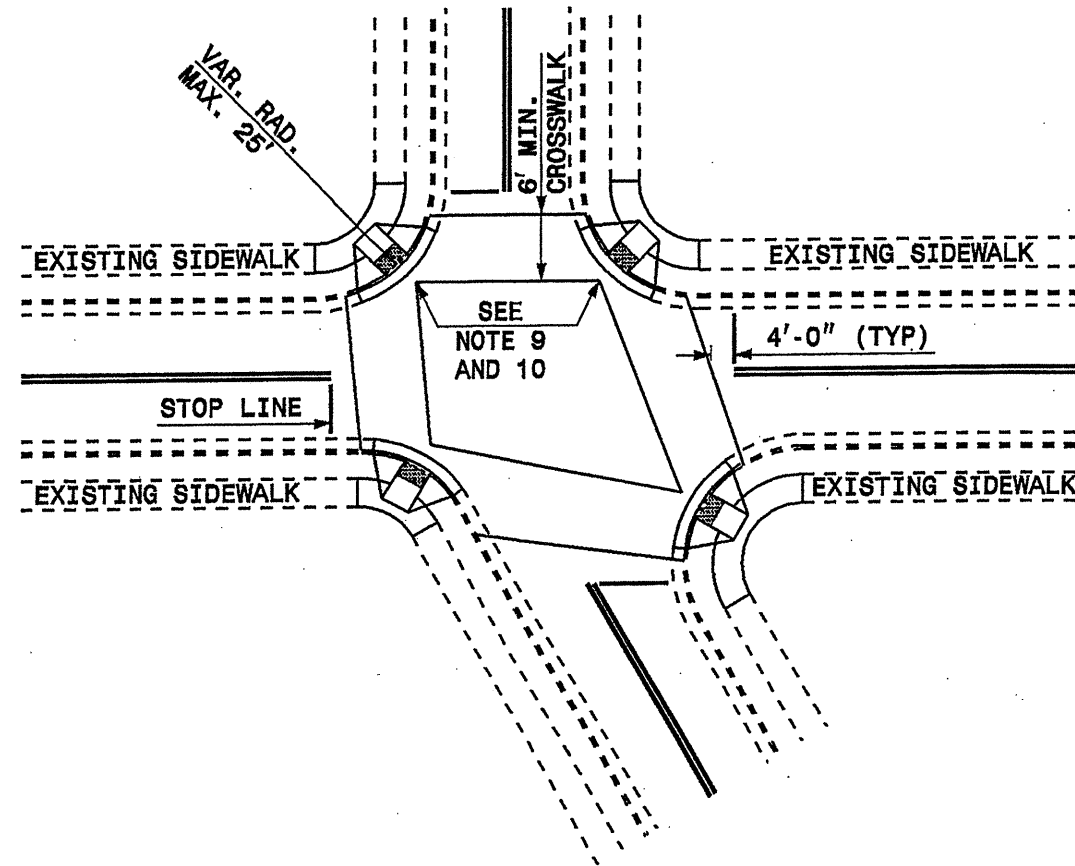
7CR.10681.3
7CR.20171.3
7CR.200681.3
7CR.306802.3
7CR.306811.3

STATE OF
NORTH CAROLINA
DEPT. OF TRANSPORTATION
DIVISION OF HIGHWAYS
RALEIGH, N.C.

ENGLISH DETAIL DRAWING FOR
WHEELCHAIR RAMP
CURB CUT



DETAIL SHOWING TYPICAL LOCATION OF WHEELCHAIR RAMPS, PEDESTRIAN CROSSWALKS AND STOP LINES FOR TEE INTERSECTIONS



DETAIL SHOWING TYPICAL LOCATION OF WHEELCHAIR RAMPS, PEDESTRIAN CROSSWALKS AND STOP LINES

RESURFACING PROJECTS

	PROPOSED WHEELCHAIR RAMP FOR RESURFACING PROJECTS
	EXISTING SIDEWALK

ALLOWABLE LOCATIONS

DIAGONAL RAMP RADII...MAX. 25'

STATE OF
NORTH CAROLINA
DEPT. OF TRANSPORTATION
DIVISION OF HIGHWAYS
RALEIGH, N.C.

ENGLISH DETAIL DRAWING FOR
WHEELCHAIR RAMP
CURB CUT

5/28/99
21-SEP-2004 10:17
resurfacing\orange 2005\Contract Package\WheelChair-2.dgn