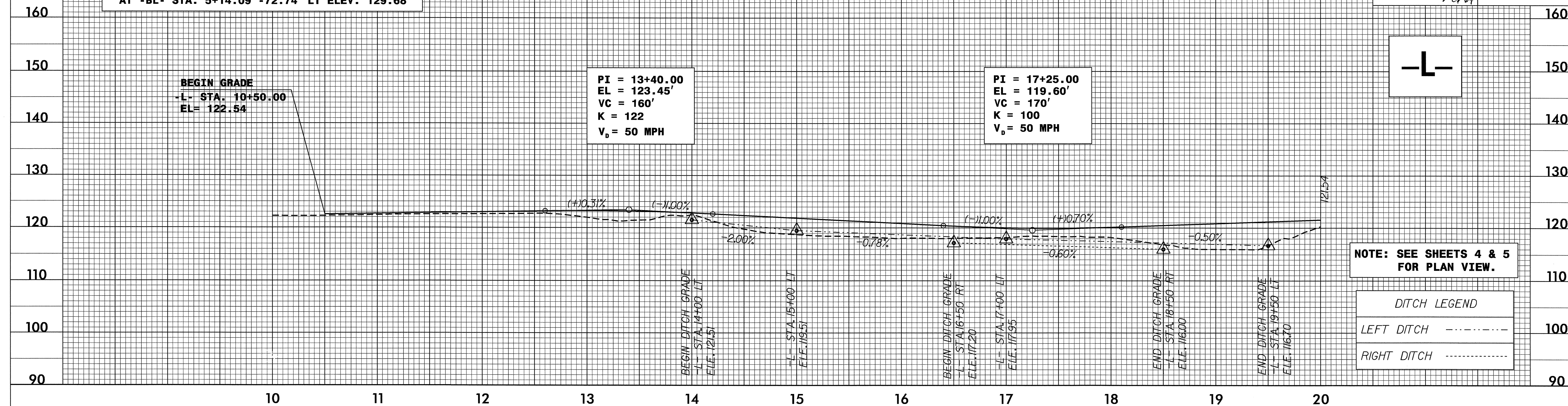


5/28/99

PROJECT REFERENCE NO. B-3879	SHEET NO. 7
ROADWAY DESIGN ENGINEER	HYDRAULICS ENGINEER

SR 1603 CARRIAGE RD.

BENCHMARK 1: RR SPIKE IN ROOT OF 24" GUM
 AT -BL- STA. 5+14.09 -72.74' LT ELEV. 129.68'



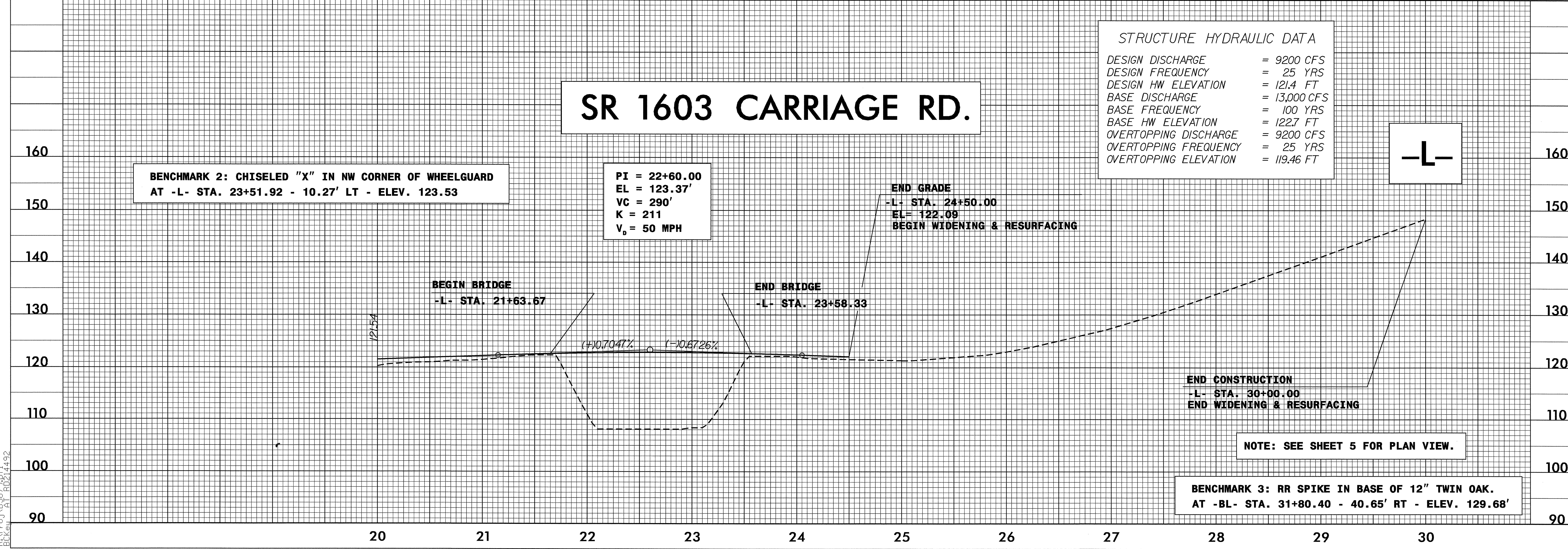
NOTE: SEE SHEETS 4 & 5 FOR PLAN VIEW.

DITCH LEGEND

LEFT DITCH	-----
RIGHT DITCH	-----

SR 1603 CARRIAGE RD.

BENCHMARK 2: CHISELED "X" IN NW CORNER OF WHEELGUARD
 AT -L- STA. 23+51.92 - 10.27' LT - ELEV. 123.53



STRUCTURE HYDRAULIC DATA

DESIGN DISCHARGE	= 9200 CFS
DESIGN FREQUENCY	= 25 YRS
DESIGN HW ELEVATION	= 121.4 FT
BASE DISCHARGE	= 13,000 CFS
BASE FREQUENCY	= 100 YRS
BASE HW ELEVATION	= 122.7 FT
OVERTOPPING DISCHARGE	= 9200 CFS
OVERTOPPING FREQUENCY	= 25 YRS
OVERTOPPING ELEVATION	= 119.46 FT

NOTE: SEE SHEET 5 FOR PLAN VIEW.

BENCHMARK 3: RR SPIKE IN BASE OF 12" TWIN OAK.
 AT -BL- STA. 31+80.40 - 40.65' RT - ELEV. 129.68'

28 JUN 2006 14:41
 BCKEY RD 21492