

5/14/99

PROJECT REFERENCE NO. B3879	SHEET NO. 8
ROADWAY DESIGN ENGINEER NORTH CAROLINA PROFESSIONAL SEAL 2685 ENGINEER BRYAN C. KEY 7-29-04	HYDRAULICS ENGINEER NORTH CAROLINA PROFESSIONAL SEAL 2685 ENGINEER DENNIS K. HOYLE

DETOUR

STRUCTURE HYDRAULIC DATA

DESIGN DISCHARGE	= 9200 CFS
DESIGN FREQUENCY	= 25 YRS
DESIGN HW ELEVATION	= 121.4 FT
BASE DISCHARGE	= 13,000 CFS
BASE FREQUENCY	= 100 YRS
BASE HW ELEVATION	= 122.7 FT
OVERTOPPING DISCHARGE	= 9200 CFS
OVERTOPPING FREQUENCY	= 25 YRS
OVERTOPPING ELEVATION	= 119.46 FT

-DET-

BEGIN GRADE
 -DET- STA. 11+35.12
 EL= 119.75
 -L- STA. 16+59.82
 OFFSET= 12' RT

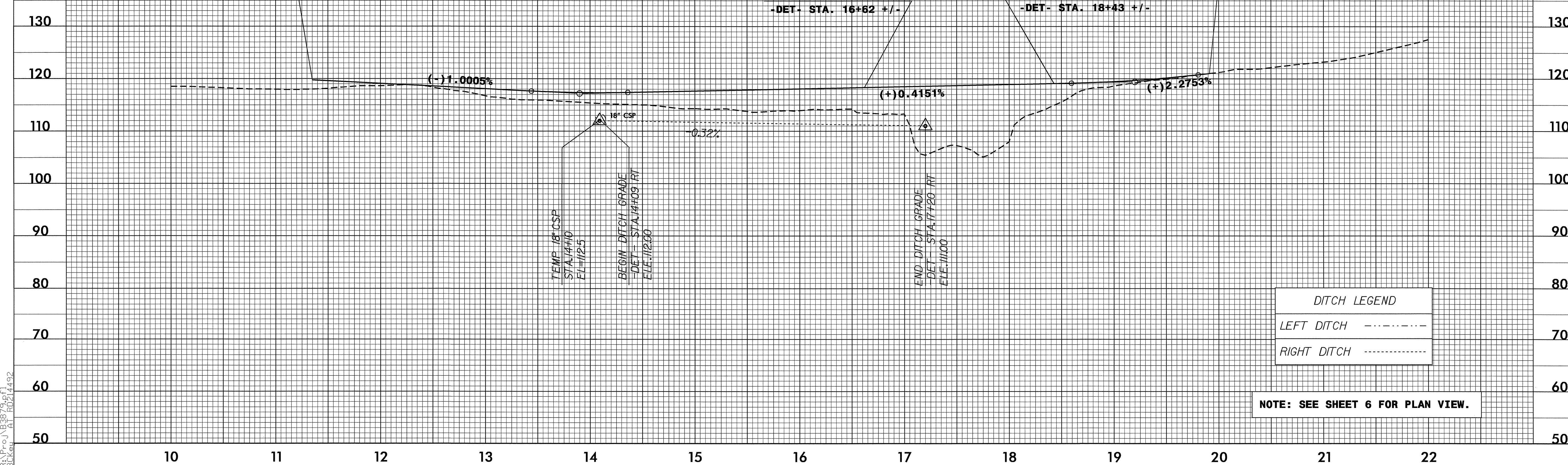
PI = 13+90.00
 EL = 117.20'
 VC = 92'
 K = 65
 V_o = 40 MPH

PI = 19+20.00
 EL = 119.40'
 VC = 121'
 K = 65
 V_o = 40 MPH

END GRADE
 -DET- STA. 19+91.20
 EL= 121.02
 -L- 24+94.29
 OFFSET= 23.45' RT

BEGIN BRIDGE
 -DET- STA. 16+62 +/-

END BRIDGE
 -DET- STA. 18+43 +/-



DITCH LEGEND

LEFT DITCH	-----
RIGHT DITCH

NOTE: SEE SHEET 6 FOR PLAN VIEW.

23-JUL-2004 14:11
RD214492.dwg
BCKey