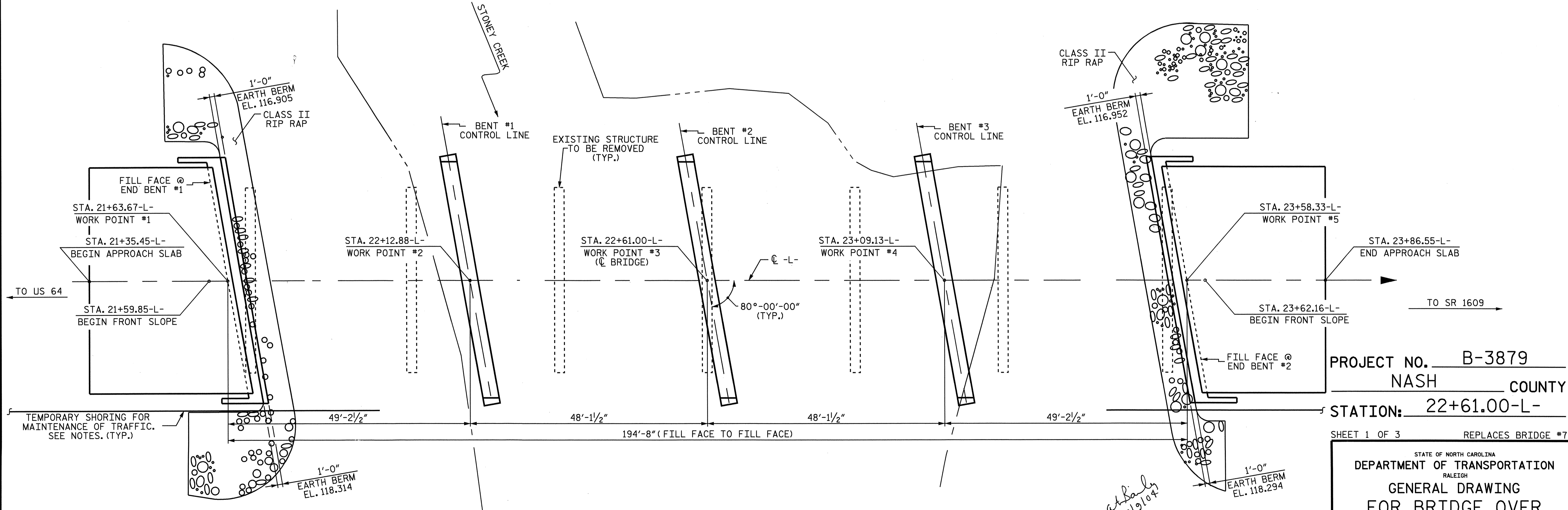


SECTION ALONG C -L-
BENTS ON SECTION AT RIGHT ANGLES TO BENTS



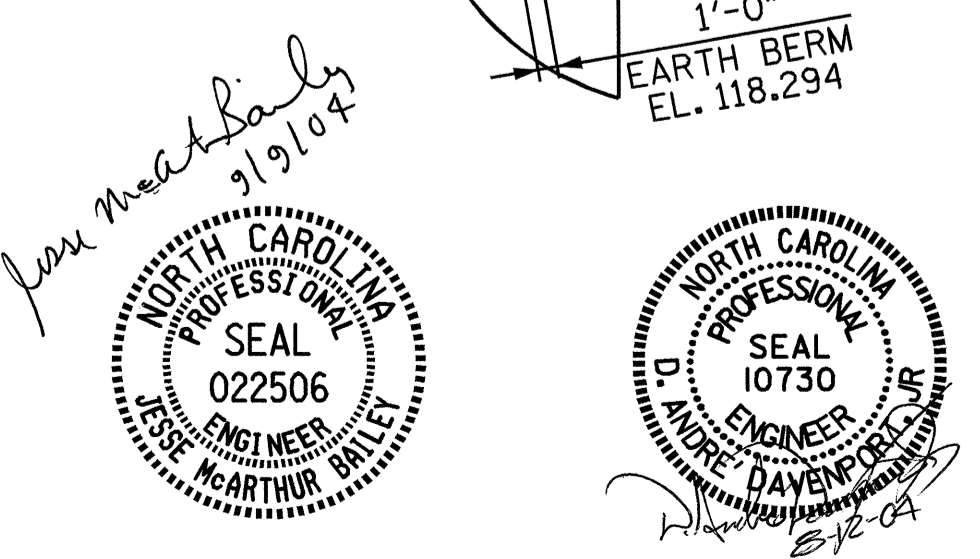
PLAN
(PILES NOT SHOWN FOR CLARITY)

PROJECT NO. B-3879
NASH COUNTY
STATION: 22+61.00-L-
SHEET 1 OF 3 REPLACES BRIDGE #73

STATE OF NORTH CAROLINA
DEPARTMENT OF TRANSPORTATION
RALEIGH
GENERAL DRAWING
FOR BRIDGE OVER
STONEY CREEK ON SR
1603 BETWEEN US 64
AND SR 1609

REVISIONS				SHEET NO.	
NO.	BY:	DATE:	NO.	BY:	DATE:
1			3		
2			4		

TOTAL SHEETS: 20



DRAWN BY : D. A. DAVENPORT DATE : 5/04
CHECKED BY : H.T. BARBOUR DATE : 6/04