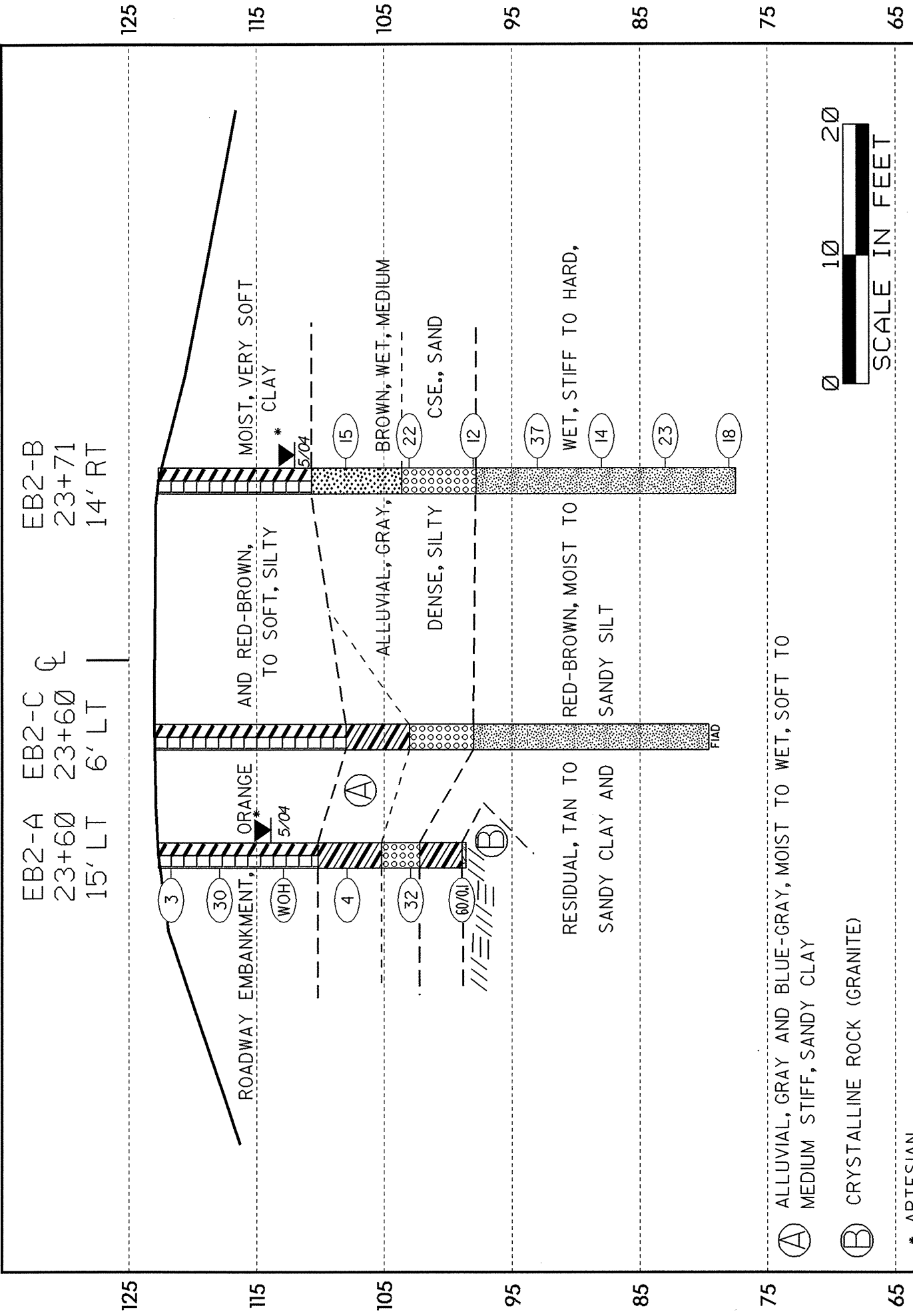


BRIDGE NO. 73,  
CROSS SECTION THROUGH END BENT 2 33322.1.1 (B-3879)



EB2-A EB2-C EB2-B  
 23+60 23+60 23+71  
 15' LT 6' LT 14' RT

125 115 105 95 85 75 65

125 115 105 95 85 75 65

ROADWAY EMBANKMENT,  
 AND RED-BROWN,  
 TO SOFT, SILTY

MOIST, VERY SOFT  
 CLAY

ORANGE  
 TO SOFT, SILTY

ALLUVIAL, GRAY,  
 DENSE, SILTY

BROWN, WET, MEDIUM  
 CSE., SAND

RESIDUAL, TAN TO  
 SANDY CLAY AND

RED-BROWN, MOIST TO  
 SANDY SILT

WET, STIFF TO HARD,

ALLUVIAL, GRAY AND BLUE-GRAY, MOIST TO WET, SOFT TO  
 MEDIUM STIFF, SANDY CLAY

CRYSTALLINE ROCK (GRANITE)

\* ARTESIAN

3 30 4 32 60/01 15 22 12 37 14 23 18

FIAD

(A) ALLUVIAL, GRAY AND BLUE-GRAY, MOIST TO WET, SOFT TO MEDIUM STIFF, SANDY CLAY

(B) CRYSTALLINE ROCK (GRANITE)

\* ARTESIAN

