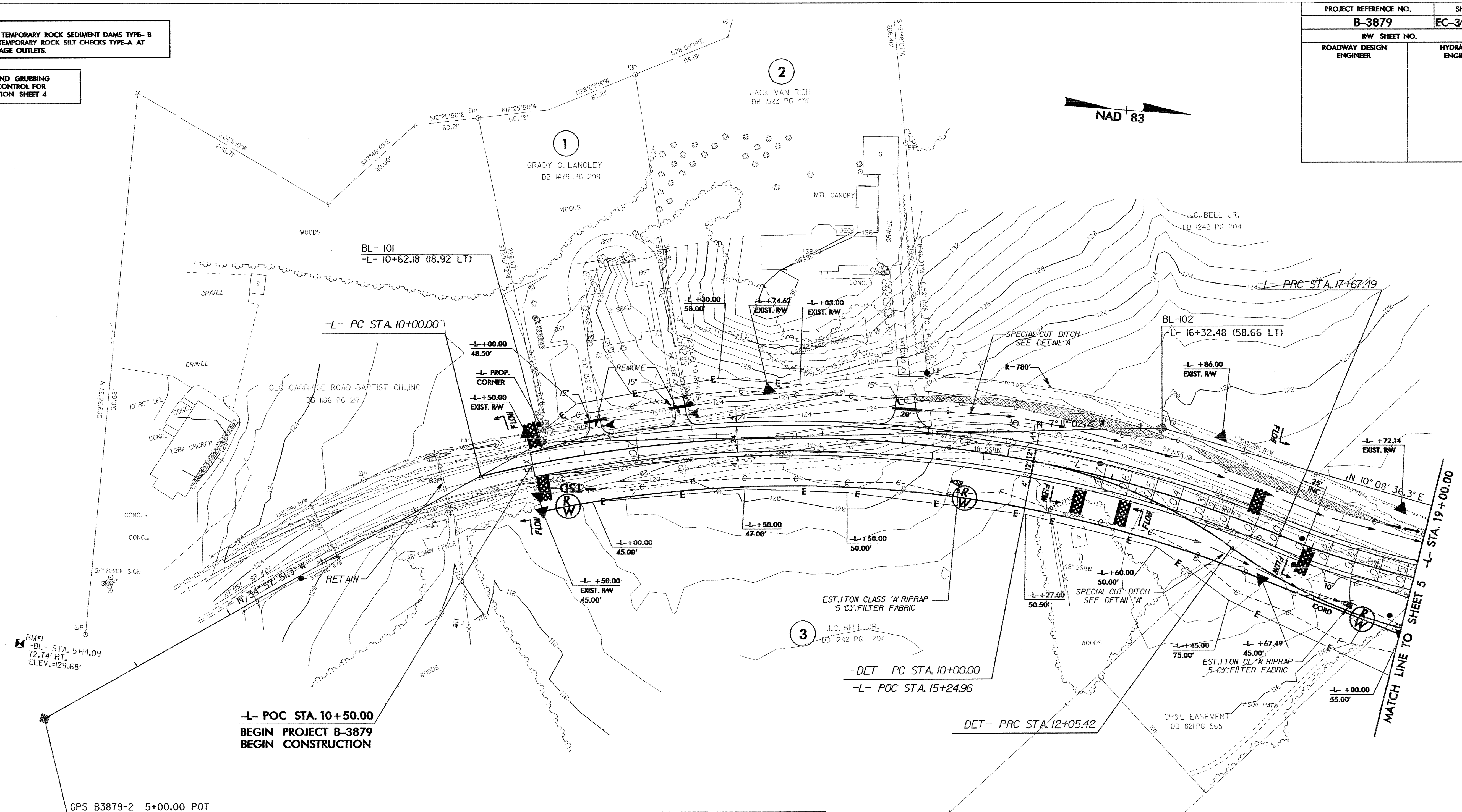


NOTE: PLACE TEMPORARY ROCK SEDIMENT DAMS TYPE- B AND TEMPORARY ROCK SILT CHECKS TYPE-A AT DRAINAGE OUTLETS.

CLEARING AND GRUBBING EROSION CONTROL FOR CONSTRUCTION SHEET 4



**DATUM DESCRIPTION**

THE LOCALIZED COORDINATE SYSTEM DEVELOPED FOR THIS PROJECT IS BASED ON THE STATE PLANE COORDINATES ESTABLISHED BY NCDOT FOR MONUMENT "GPS B3879-3" WITH NAD 1983/95 STATE PLANE GRID COORDINATES OF NORTHING: 816865.302(ft) EASTING: 2324903.841(ft) THE AVERAGE COMBINED GRID FACTOR USED ON THIS PROJECT (GROUND TO GRID) IS: 0.99995431 THE N.C. LAMBERT GRID BEARING AND LOCALIZED HORIZONTAL GROUND DISTANCE FROM "GPS B3879-3" TO -L- STATION 10+50.00 IS S 5°01'06.34" E 1,492.35 FT ALL LINEAR DIMENSIONS ARE LOCALIZED HORIZONTAL DISTANCES VERTICAL DATUM USED IS NAVD 88

-L-	
PI Sta 13+97.38	PI Sta 19+21.43
$\Delta = 36^{\circ} 38' 41.8" (RT)$	$\Delta = 22^{\circ} 54' 05.2" (LT)$
$D = 4' 46" 28.7"$	$D = 7' 32" 20.1"$
$L = 767.49'$	$L = 303.78'$
$T = 397.38'$	$T = 153.94'$
$R = 1,200.00'$	$R = 760.00'$
$SE = 0.07$	$SE = 0.08$
$RO = SEE PLANS$	$RO = SEE PLANS$
$V_{Des} = 50\text{mph}$	$V_{Des} = 50\text{mph}$

-DET-	
PI Sta 11+04.41	PI Sta 13+59.35
$\Delta = 25^{\circ} 18' 39.3" (RT)$	$\Delta = 36^{\circ} 37' 56.7" (LT)$
$D = 12' 19" 18.0"$	$D = 12' 19" 18.0"$
$L = 205.42'$	$L = 297.30'$
$T = 104.41'$	$T = 153.93'$
$R = 465.00'$	$R = 465.00'$
$V_{Des} = 40\text{mph}$	$V_{Des} = 40\text{mph}$

3  
J.C. BELL JR.  
DB 1242 PG 204

NOTE: SEE SHEET 7 FOR -L- PROFILE. SEE SHEET 6 FOR DETOUR.