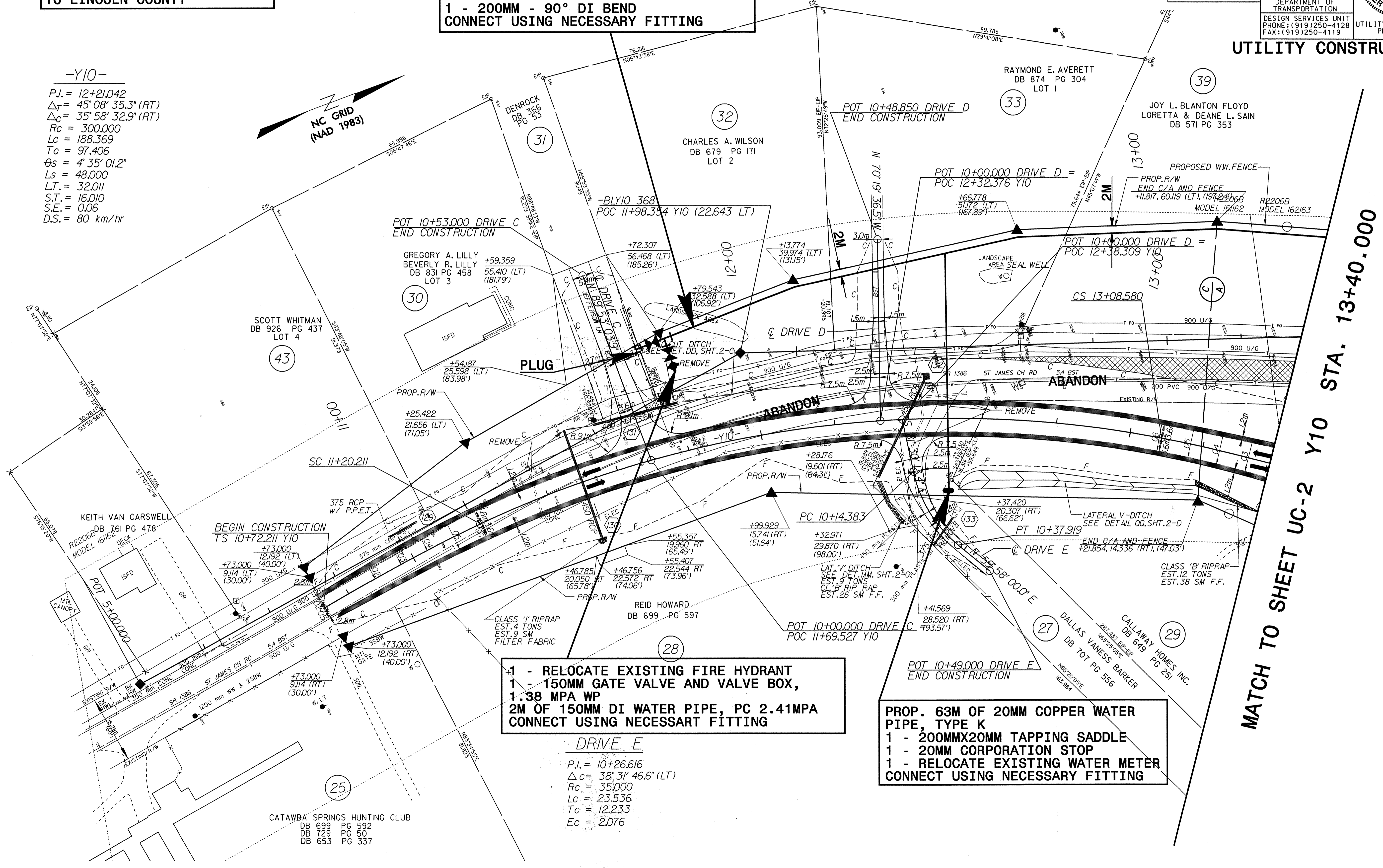
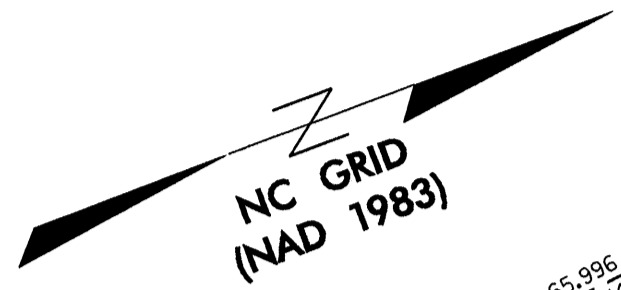


200MM WATER LINE BELONGS TO LINCOLN COUNTY

PROP. 191.5M OF 200MM PVC WATER PIPE, (C900), CLASS 200 DR 14. 1.38MPA WP
 1 - 200MM GATE VALVE AND VALVE BOX
 1.38 MPA WP
 1 - 200MMX150MM DI TEE
 1 - 200MM - 90° DI BEND
 CONNECT USING NECESSARY FITTING

-Y10-
 P.I. = 12+21.042
 $\Delta T = 45^\circ 08' 35.3''$ (RT)
 $\Delta C = 35^\circ 58' 32.9''$ (RT)
 Rc = 300.000
 Lc = 188.369
 Tc = 97.406
 $\theta s = 4^\circ 35' 01.2''$
 Ls = 48.000
 L.T. = 32.011
 S.T. = 16.010
 S.E. = 0.06
 D.S. = 80 km/hr



1 - RELOCATE EXISTING FIRE HYDRANT
 1 - 150MM GATE VALVE AND VALVE BOX,
 1.38 MPA WP
 2M OF 150MM DI WATER PIPE, PC 2.41MPA
 CONNECT USING NECESSARY FITTING

DRIVE E
 P.I. = 10+26.616
 $\Delta c = 38^\circ 31' 46.6''$ (LT)
 Rc = 35.000
 Lc = 23.536
 Tc = 12.233
 Ec = 2.076

PROP. 63M OF 20MM COPPER WATER PIPE, TYPE K
 1 - 200MMX20MM TAPPING SADDLE
 1 - 20MM CORPORATION STOP
 1 - RELOCATE EXISTING WATER METER
 CONNECT USING NECESSARY FITTING

MATCH TO SHEET UC-2 Y10 STA. 13+40.000