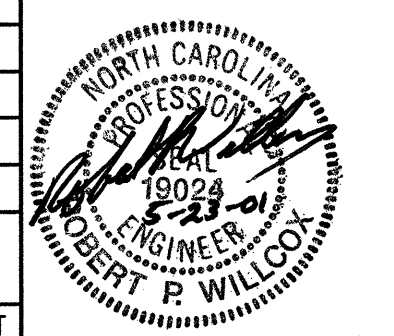


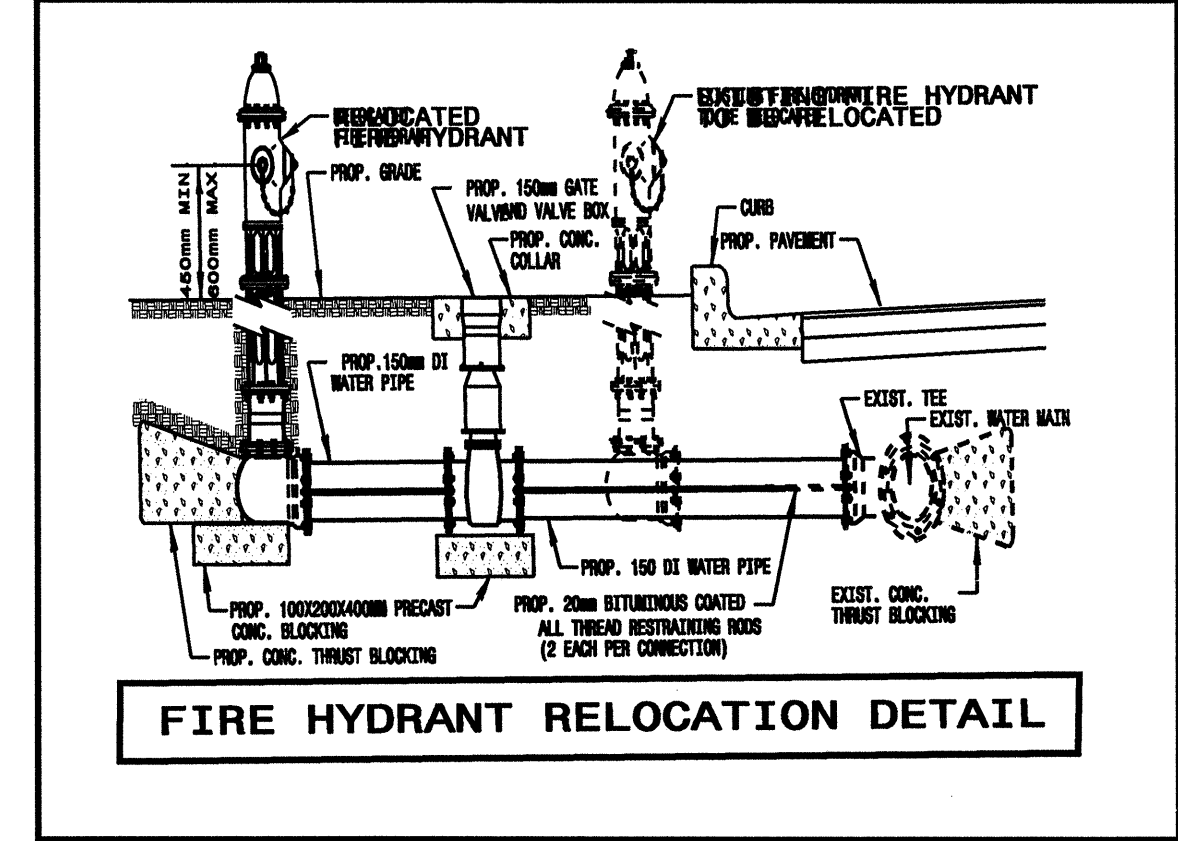
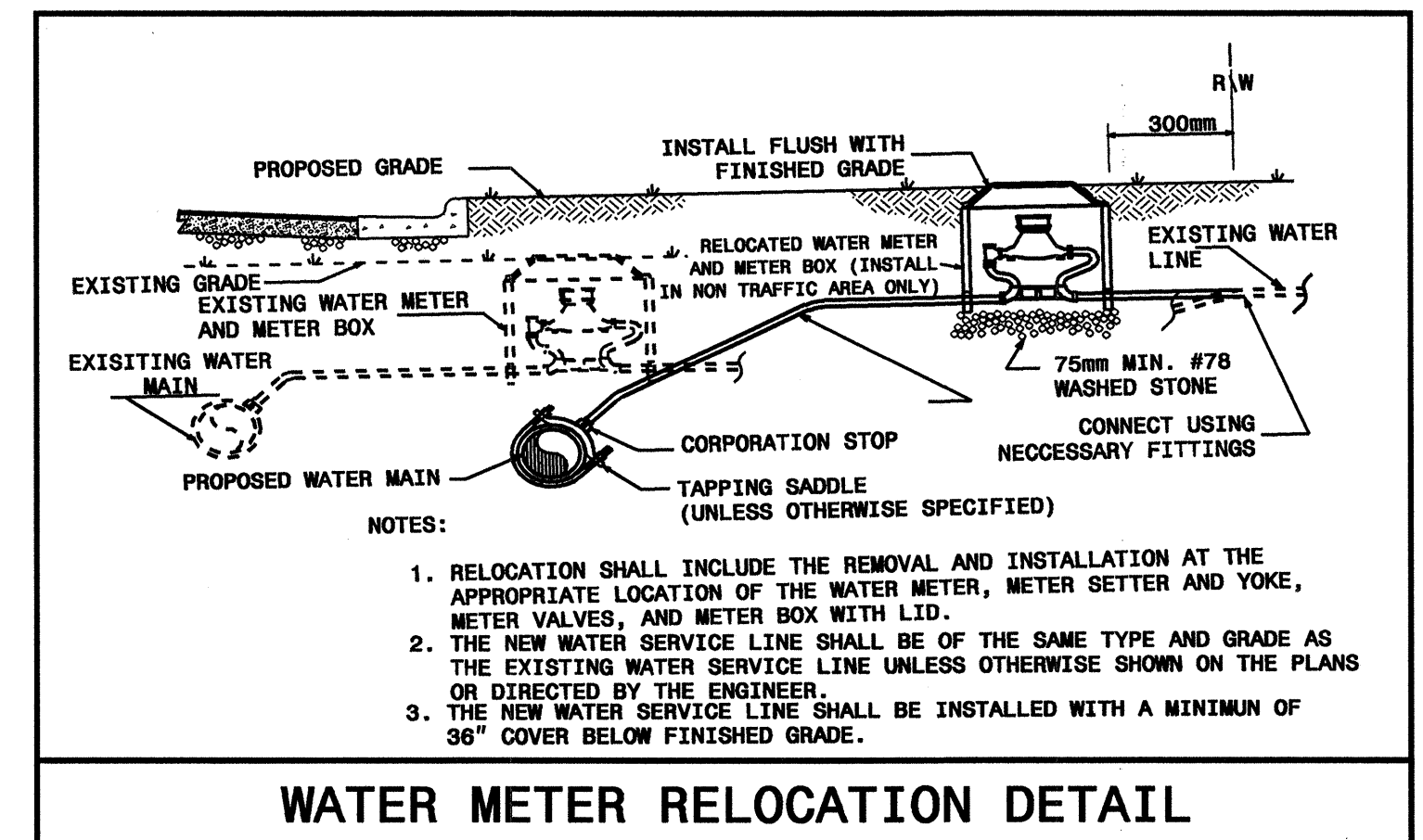
| | |
|--|-------------|
| PROJECT REFERENCE NO. | SHEET NO. |
| R-2206B | UC-3 |
| DESIGNED BY: JH | |
| DRAWN BY: JH | |
| CHECKED BY: RPW | |
| APPROVED BY: RPW | |
| REVISED: | |
| NORTH CAROLINA DEPARTMENT OF TRANSPORTATION | |
| DESIGN SERVICES UNIT PHONE: (919) 250-4128 FAX: (919) 250-4119 | |
| UTILITY CONSTRUCTION PLANS ONLY | |



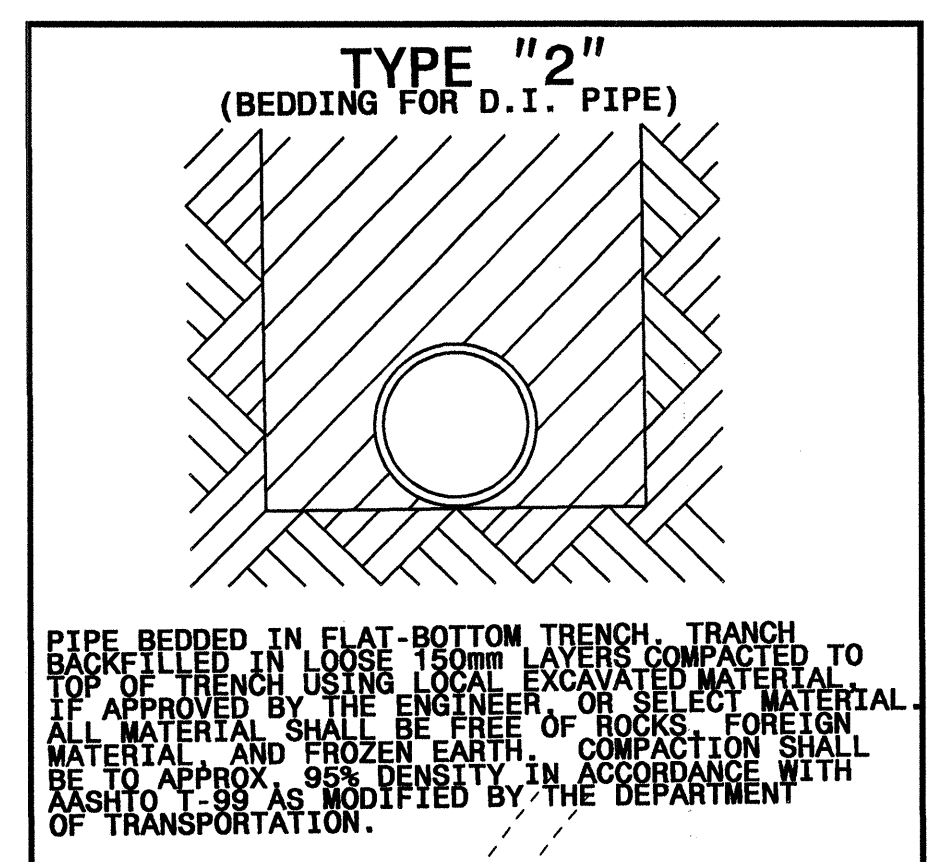
UTILITY CONSTRUCTION

**MATCH TO SHEET UC - 2
Y10 STA. 17+20.000**

**PROP. 1 - 150MM GATE VALVE
AND VALVE BOX 1.38MPA WP
1 - 200MMX150MM DI TEE
2M OF 150MM DI WATER PIPE,
PC 2.41MPA
1-RELOCATE EXISTING FIRE HYDRANT
CONNECT USING NECESSARY FITTING**

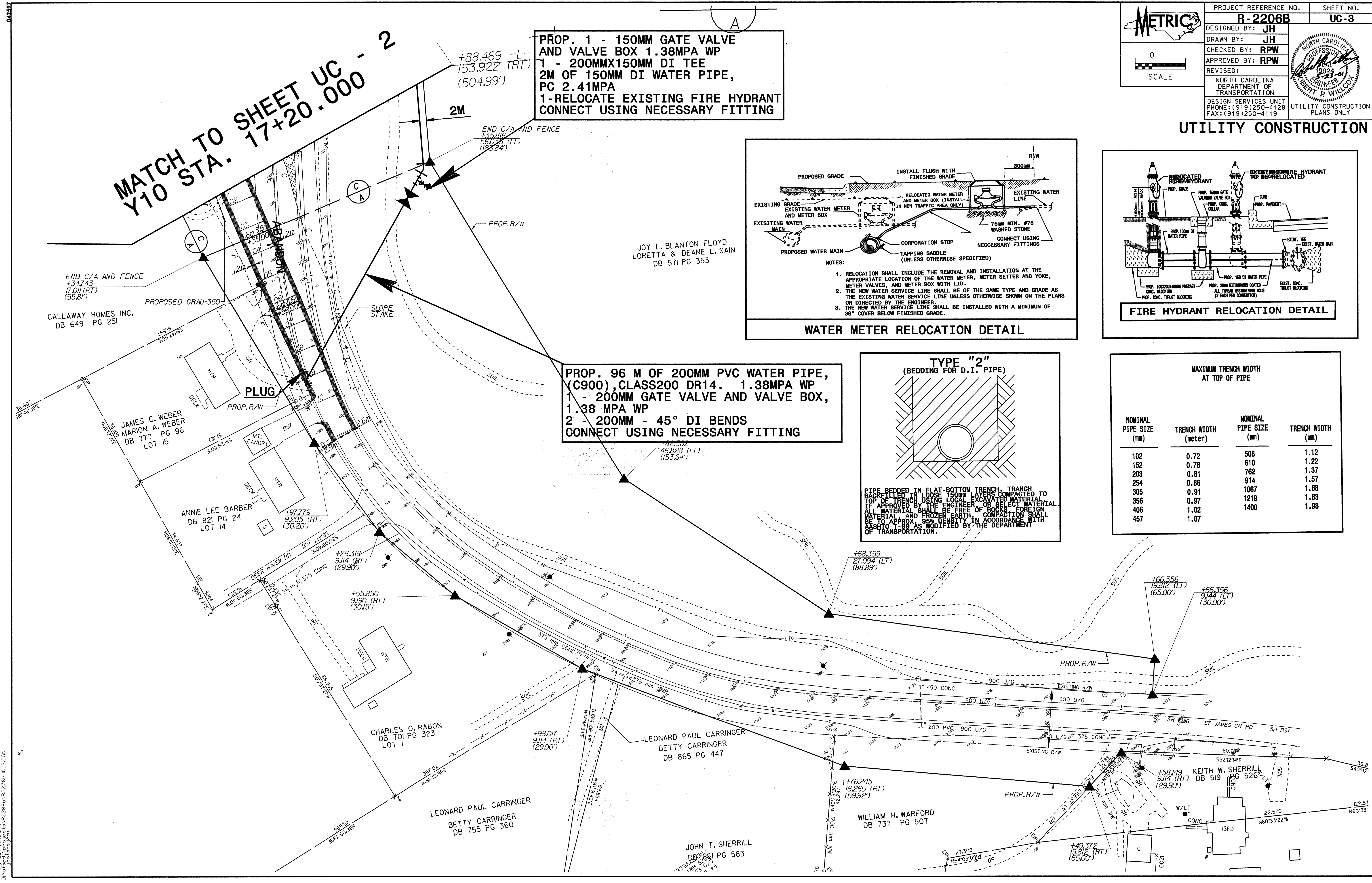


**PROP. 96 M OF 200MM PVC WATER PIPE,
(C900), CLASS200 DR14. 1.38MPA WP
1 - 200MM GATE VALVE AND VALVE BOX,
1.38 MPA WP
2 - 200MM - 45° DI BENDS
CONNECT USING NECESSARY FITTING**



**MAXIMUM TRENCH WIDTH
AT TOP OF PIPE**

| NOMINAL PIPE SIZE (mm) | TRENCH WIDTH (meter) | NOMINAL PIPE SIZE (mm) | TRENCH WIDTH (mm) |
|------------------------|----------------------|------------------------|-------------------|
| 102 | 0.72 | 508 | 1.12 |
| 152 | 0.76 | 610 | 1.22 |
| 203 | 0.81 | 762 | 1.37 |
| 254 | 0.86 | 914 | 1.57 |
| 305 | 0.91 | 1067 | 1.68 |
| 356 | 0.97 | 1219 | 1.83 |
| 406 | 1.02 | 1400 | 1.98 |
| 457 | 1.07 | | |



042597
 23-MAY-2001 14:47
 D:\projects\2206b\2206b\UC-3.DGN
 R2206B UC-3.DGN