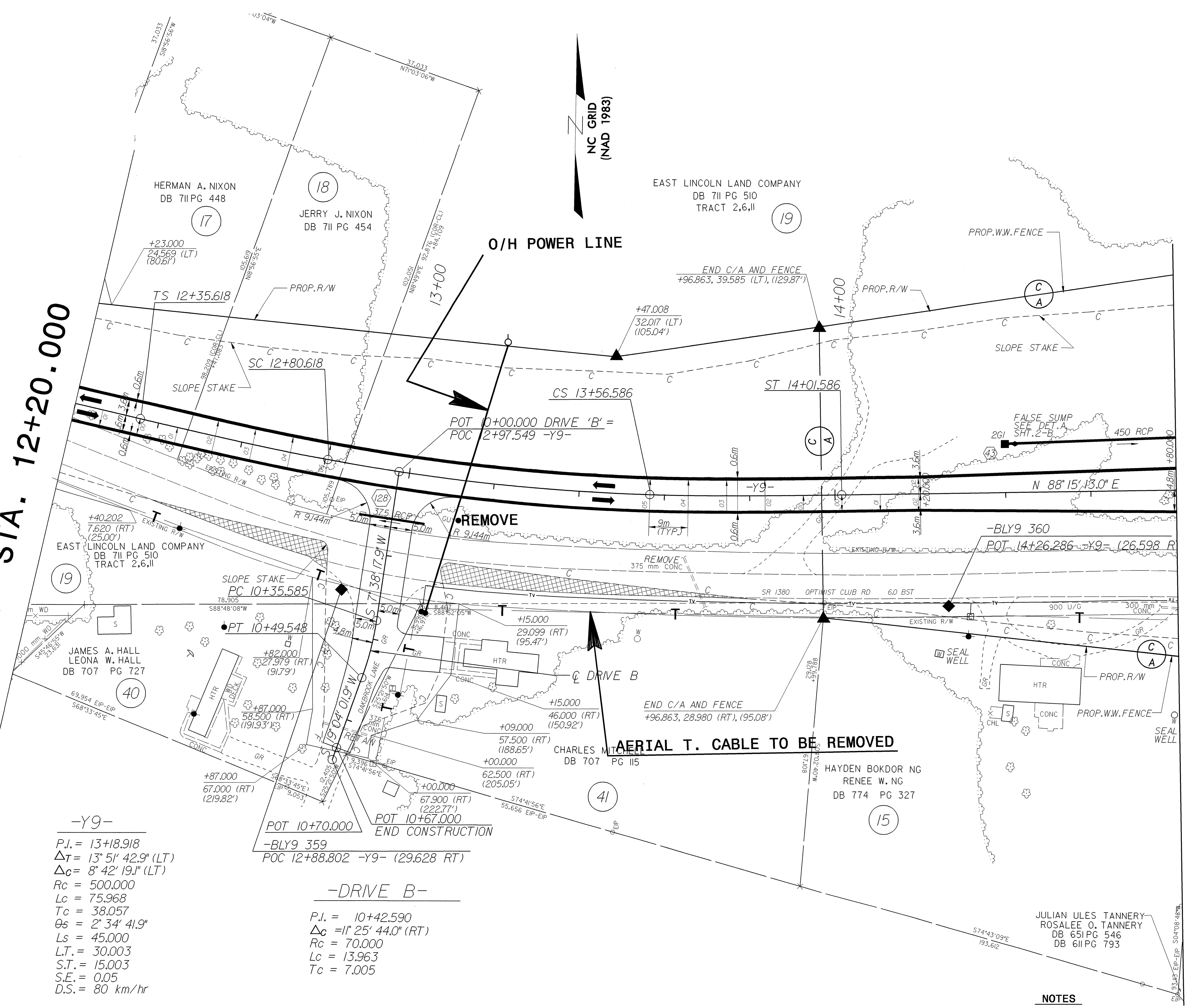


NOTE:
 ALL PROPOSED UTILITY WORK
 SHOWN ON THIS SHEET WILL
 BE DONE BY OTHERS

MATCH TO Y-9 STA. 12+20.000

MATCH TO Y-9 STA. 14+80.000



-Y9-
 P.I. = 13+18.918
 $\Delta T = 13^\circ 51' 42.9''$ (LT)
 $\Delta C = 8' 42' 19.1''$ (LT)
 $R_c = 500.000$
 $L_c = 75.968$
 $T_c = 38.057$
 $\theta_s = 2^\circ 34' 41.9''$
 $L_s = 45.000$
 $L.T. = 30.003$
 $S.T. = 15.003$
 $S.E. = 0.05$
 $D.S. = 80 \text{ km/hr}$

-DRIVE B-
 P.I. = 10+42.590
 $\Delta C = 11^\circ 25' 44.0''$ (RT)
 $R_c = 70.000$
 $L_c = 13.963$
 $T_c = 7.005$

- NOTES**
- | | |
|---------------------------|------------------|
| FOR PROFILE OF: | SEE SHEET NO: |
| 1. -Y9- | 55, 56 |
| DRIVE B | 55 |
| 2. FOR CROSS SECTIONS OF: | SEE SHEET NO: |
| -Y9- | X-145 THRU X-150 |