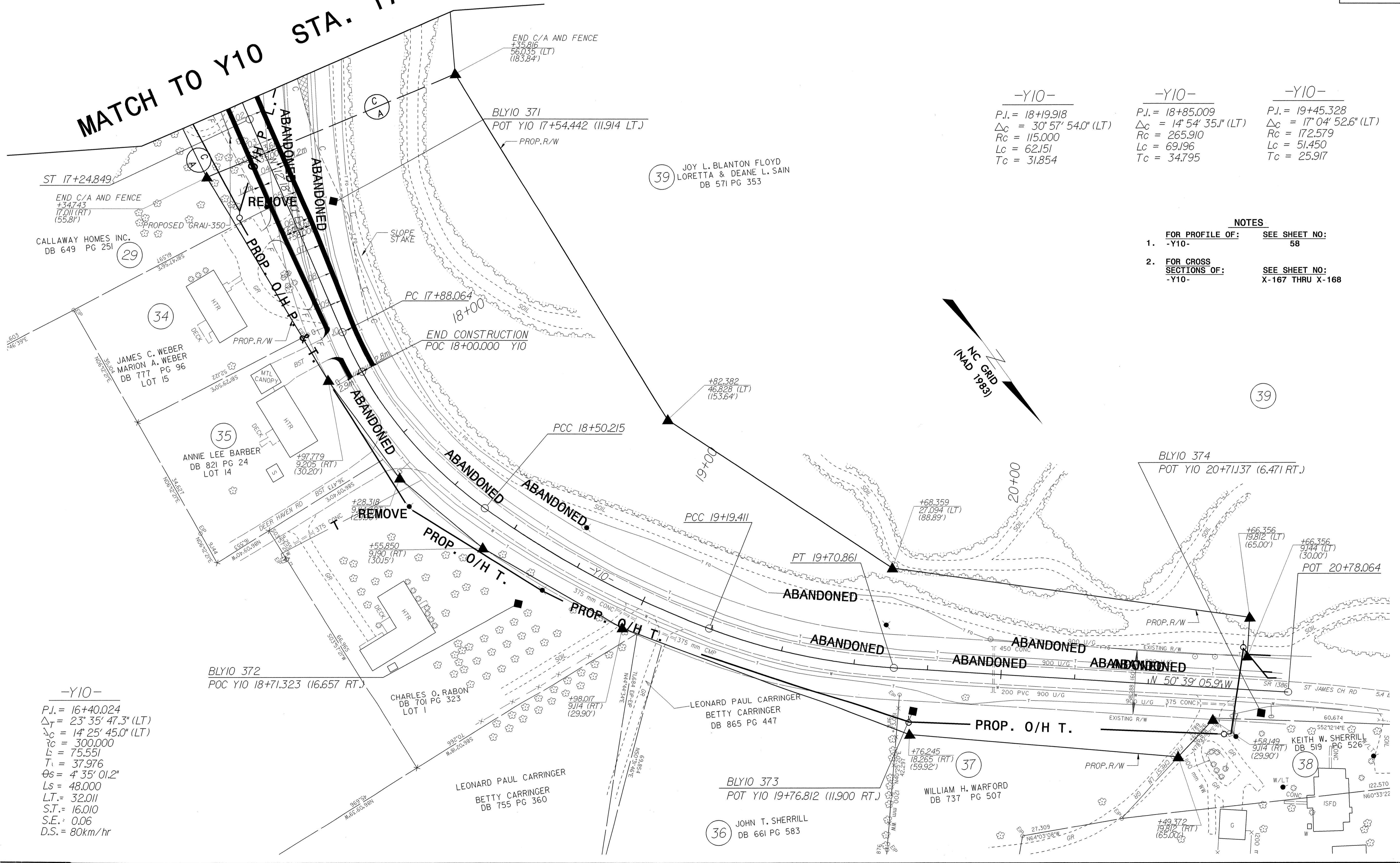


MATCH TO Y10 STA. 17+20.000

-Y10-	-Y10-	-Y10-
P.I. = 18+19.918	P.I. = 18+85.009	P.I. = 19+45.328
$\Delta C = 30^{\circ} 57' 54.0''$ (LT)	$\Delta C = 14^{\circ} 54' 35.1''$ (LT)	$\Delta C = 17^{\circ} 04' 52.6''$ (LT)
Rc = 115.000	Rc = 265.910	Rc = 172.579
Lc = 62.151	Lc = 69.196	Lc = 51.450
Tc = 31.854	Tc = 34.795	Tc = 25.917

- NOTES**
- FOR PROFILE OF: -Y10- SEE SHEET NO: 58
 - FOR CROSS SECTIONS OF: -Y10- SEE SHEET NO: X-167 THRU X-168



-Y10-

P.I. = 16+40.024
$\Delta T = 23^{\circ} 35' 47.3''$ (LT)
$\Delta C = 14^{\circ} 25' 45.0''$ (LT)
Rc = 300.000
Lc = 75.551
Tc = 37.976
$\theta_s = 4^{\circ} 35' 01.2''$
Ls = 48.000
L.T. = 32.011
S.T. = 16.010
S.E. = 0.06
D.S. = 80km/hr

042597

06-AUG-2001 12:46:00 scribble006.DGN