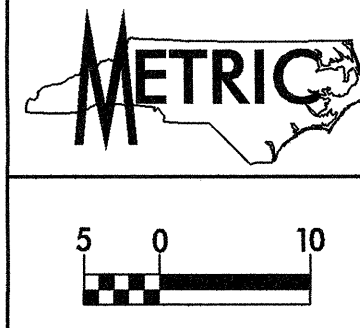


REVISIONS

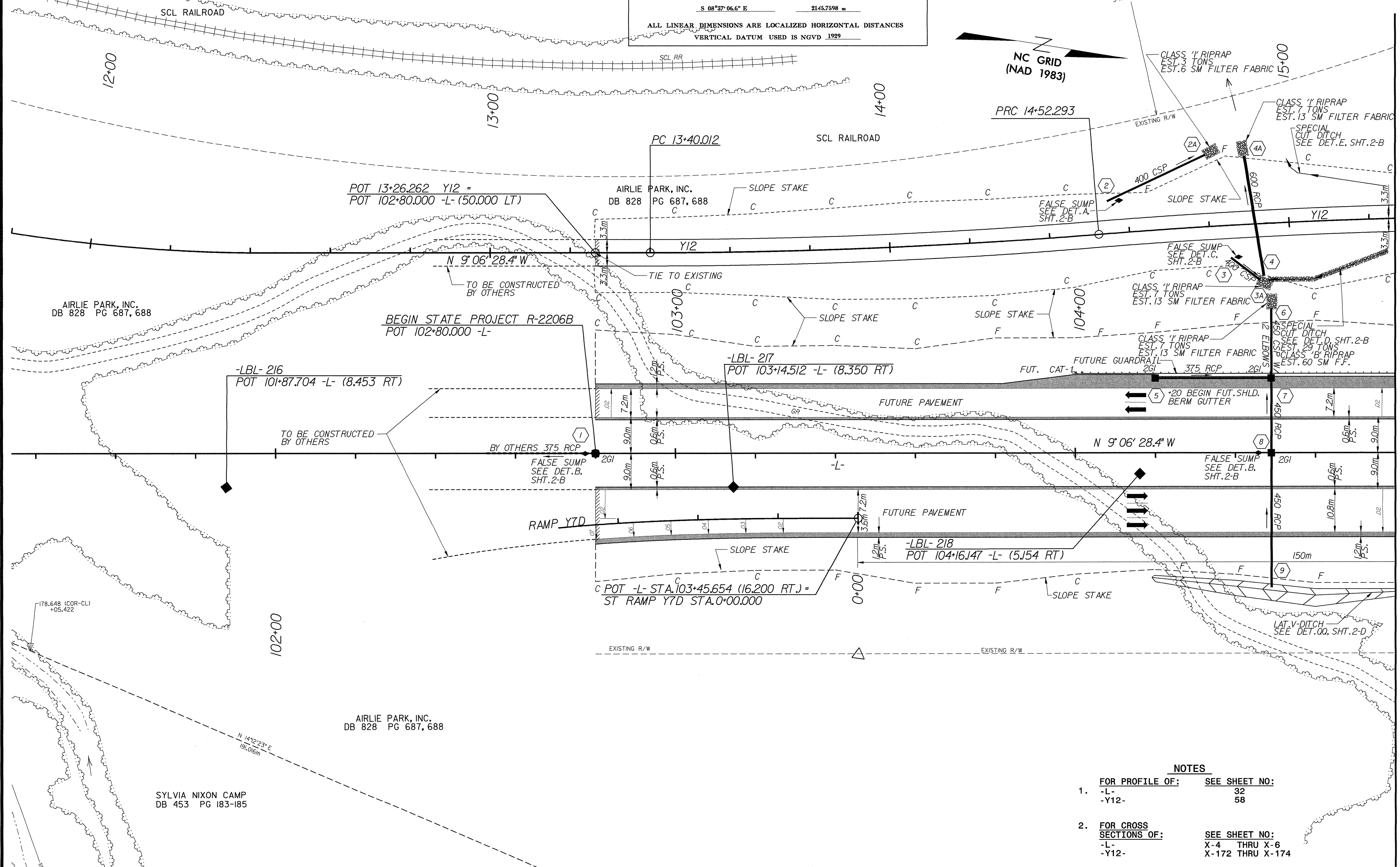
Y12
 P.I. = 13+96.183
 $\Delta c = 4' 35" 42.5" (LT)$
 $Rc = 1,400.000$
 $Lc = 112.281$
 $Tc = 56.170$
 $Ec = 1126$
 D.S. = 60 km/hr

AIRLIE PARK, INC.
 DB 828 PG 687, 688
 Y12
 P.I. = 15+08.463
 $\Delta c = 4' 35" 42.4" (RT)$
 $Rc = 1,400.000$
 $Lc = 112.280$
 $Tc = 56.170$
 $Ec = 1126$
 D.S. = 60 km/hr

DATUM DESCRIPTION
 IS BASED ON THE STATE PLANE COORDINATES ESTABLISHED BY
 NC GPS FOR MONUMENT " R2206-12 "
 WITH NAD 83 STATE PLANE GRID COORDINATES OF
 NORTHING: N 195442.3400 (m) EASTING: E 426951.0780 (m)
 (GROUND TO GRID) IS: 0.99981237
 THE N.C. LAMBERT GRID BEARING AND
 LOCALIZED HORIZONTAL GROUND DISTANCE FROM
 " R2206-12 " TO BLL STATION 109 46.563 (-LBL- 220) IS
 S 08°37'06.6" E 2145.7598 m
 ALL LINEAR DIMENSIONS ARE LOCALIZED HORIZONTAL DISTANCES
 VERTICAL DATUM USED IS NGVD 1929



PROJECT REFERENCE NO. R-2206B	SHEET NO. 4
R/W SHEET NO.	
ROADWAY DESIGN ENGINEER SEAL 022609	HYDRAULICS ENGINEER SEAL 14160
CONST. REV.	
R/W REV.	



MATCH TO SHEET 5 -L- STA. 104+80.000

NOTES

- FOR PROFILE OF: SEE SHEET NO:
- 1. -L- 32
 - Y12- 58
- FOR CROSS SECTIONS OF: SEE SHEET NO:
- 2. -L- X-4 THRU X-6
 - Y12- X-172 THRU X-174

DATE: 03 AUG 2001
 TIME: 12:49:33
 FILE: R-2206B\shd04.sh