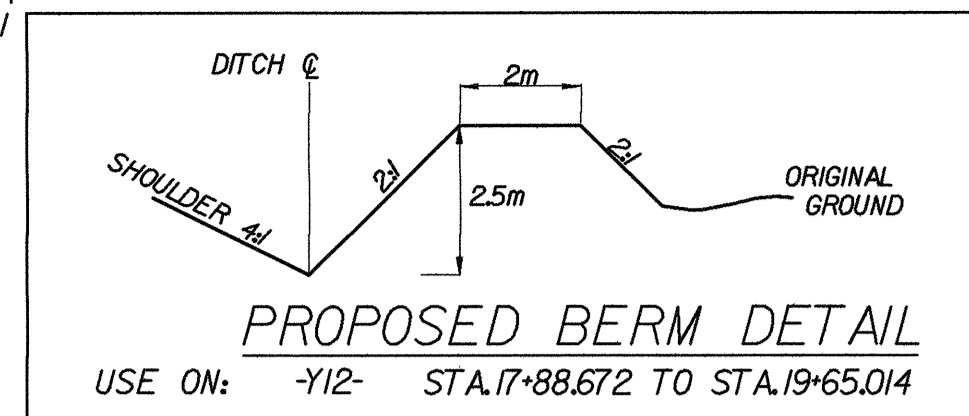


REVISIONS

Y12
 P.I. = 18+48.370
 $\Delta_c = 8' 01'' 02.9''$ (RT)
 Rc = 1,809.000
 Lc = 253.136
 Tc = 126.775
 Ec = 4.437
 D.S. = 60 km/hr

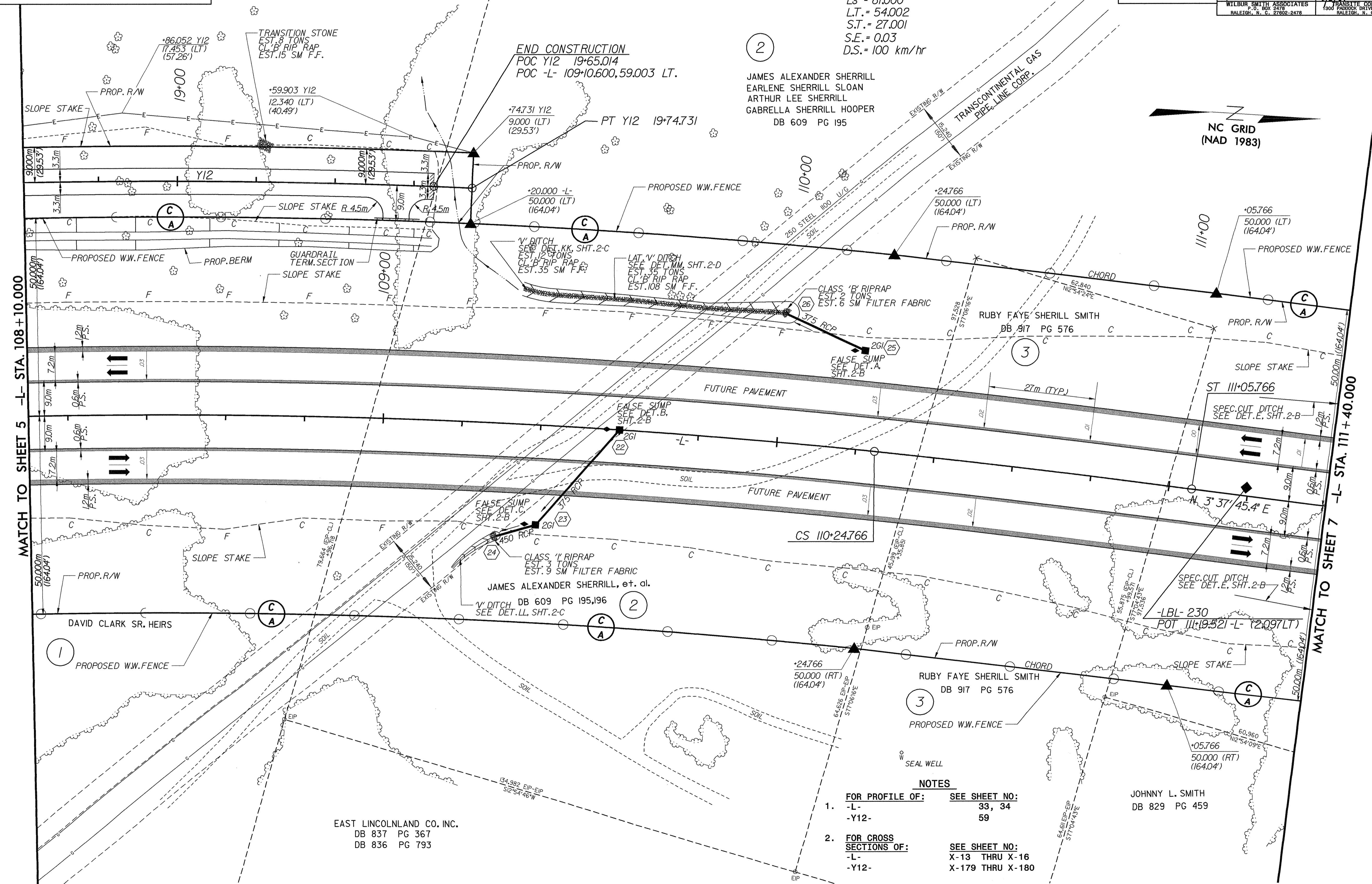
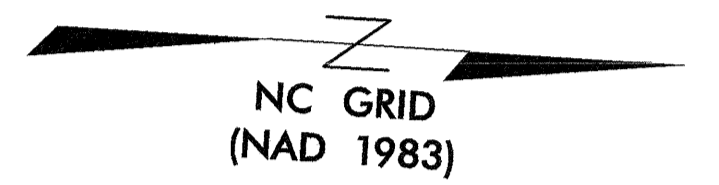
DAVID CLARK SR. HEIRS



-L-
 P.I. = 108+71.570
 $\Delta_T = 12' 44'' 13.8''$ (RT)
 $\Delta_c = 10' 05'' 06.7''$ (RT)
 Rc = 1,750.000
 Lc = 308.035
 Tc = 154.416
 $\theta_s = 1' 19'' 33.6''$
 Ls = 81.000
 L.T. = 54.002
 S.T. = 27.001
 S.E. = 0.03
 D.S. = 100 km/hr

	PROJECT REFERENCE NO. R-2206B	SHEET NO. 6
	R/W SHEET NO.	
ROADWAY DESIGN ENGINEER	HYDRAULICS ENGINEER	
CONST. REV.	R/W REV.	

JAMES ALEXANDER SHERRILL
 EARLENE SHERRILL SLOAN
 ARTHUR LEE SHERRILL
 GABRELLA SHERRILL HOOPER
 DB 609 PG 195



MATCH TO SHEET 5 -L- STA. 108+10.000

MATCH TO SHEET 7 -L- STA. 111+40.000

- NOTES**
- FOR PROFILE OF: SEE SHEET NO:
 -L- 33, 34
 -Y12- 59
 - FOR CROSS SECTIONS OF: SEE SHEET NO:
 -L- X-13 THRU X-16
 -Y12- X-179 THRU X-180

EAST LINCOLN LAND CO. INC.
 DB 837 PG 367
 DB 836 PG 793

JOHNNY L. SMITH
 DB 829 PG 459