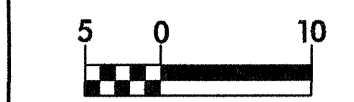


REVISIONS



CONST. REV.

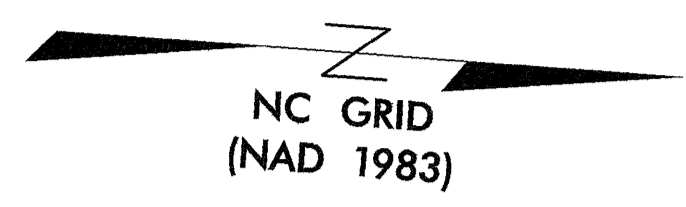
R/W REV.

PROJECT REFERENCE NO. R-2206B	SHEET NO. 8
R/W SHEET NO.	
ROADWAY DESIGN ENGINEER SEAL 022609	HYDRAULICS ENGINEER SEAL 14160
WILBUR SMITH ASSOCIATES 1300 PARRISH CONSULTING RALEIGH, N. C. 27602-2478	

EAST LINCOLN LAND CO. INC
DB 711 PG 505
TRACT 3, 4, 7

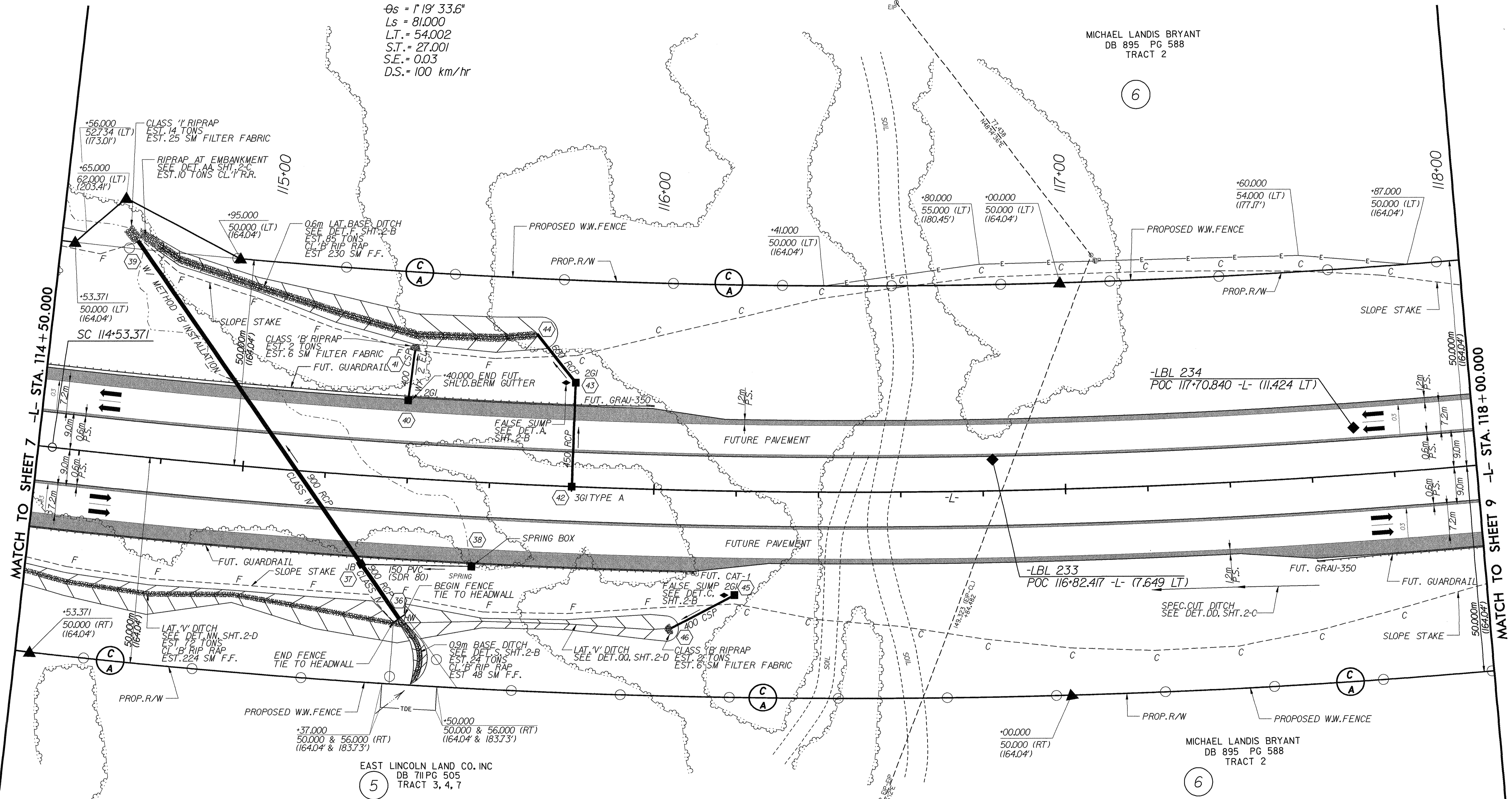
(5)

-L-
 P.I. = 116+92.856
 $\Delta T = 18' 10" 40.9" (LT)$
 $\Delta C = 15' 31" 33.8" (LT)$
 $R_c = 1,750,000$
 $L_c = 474.217$
 $T_c = 238.570$
 $\theta_s = 1' 19" 33.6"$
 $L_s = 81.000$
 $L.T. = 54.002$
 $S.T. = 27.001$
 $S.E. = 0.03$
 $D.S. = 100 \text{ km/hr}$



MICHAEL LANDIS BRYANT
DB 895 PG 588
TRACT 2

(6)



EAST LINCOLN LAND CO. INC
DB 711 PG 505
TRACT 3, 4, 7

MICHAEL LANDIS BRYANT
DB 895 PG 588
TRACT 2

(6)

NOTES

- FOR PROFILE OF: SEE SHEET NO:
-L- 35, 36
- FOR CROSS SECTIONS OF: SEE SHEET NO:
-L- X-23 THRU X-29