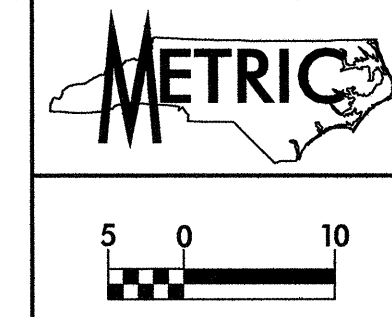
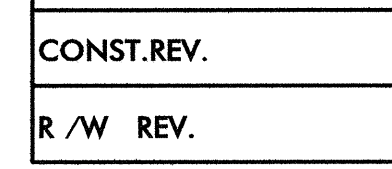


REVISIONS



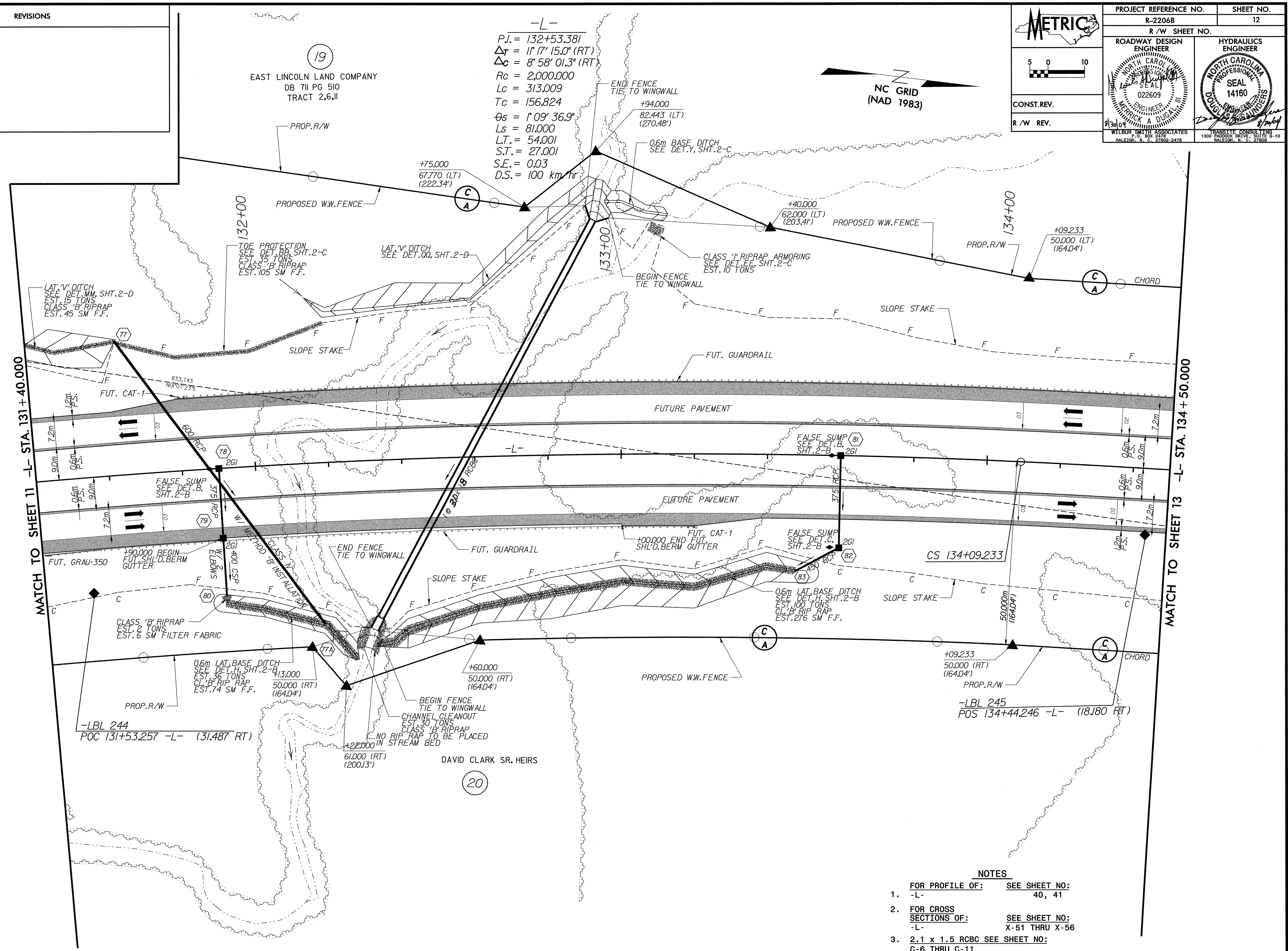
PROJECT REFERENCE NO. R-2206B	SHEET NO. 12
R / W SHEET NO.	
ROADWAY DESIGN ENGINEER WILBUR SMITH ASSOCIATES 022609	HYDRAULICS ENGINEER TRANSITE CONSULTING 14160
CONST. REV.	
R / W REV.	



NC GRID
(NAD 1983)

-L-
 $P.I. = 132+53.381$
 $\Delta T = 11^\circ 17' 15.0''$ (RT)
 $\Delta C = 8^\circ 58' 01.3''$ (RT)
 $Rc = 2,000.000$
 $Lc = 313.009$
 $Tc = 156.824$
 $\theta_s = 1^\circ 09' 36.9''$
 $Ls = 81.000$
 $L.T. = 54.001$
 $S.T. = 27.001$
 $S.E. = 0.03$
 $D.S. = 100 \text{ km/hr}$

19
 EAST LINCOLN LAND COMPANY
 DB 711 PG 510
 TRACT 2.6, II



- NOTES**
- FOR PROFILE OF: SEE SHEET NO: -L- 40, 41
 - FOR CROSS SECTIONS OF: SEE SHEET NO: -L- X-51 THRU X-56
 - 2.1 x 1.5 RCBC SEE SHEET NO: C-6 THRU C-11

DATE: 04/25/11
 TIME: 3:15 PM
 SPILER