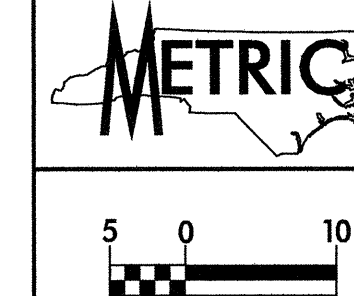
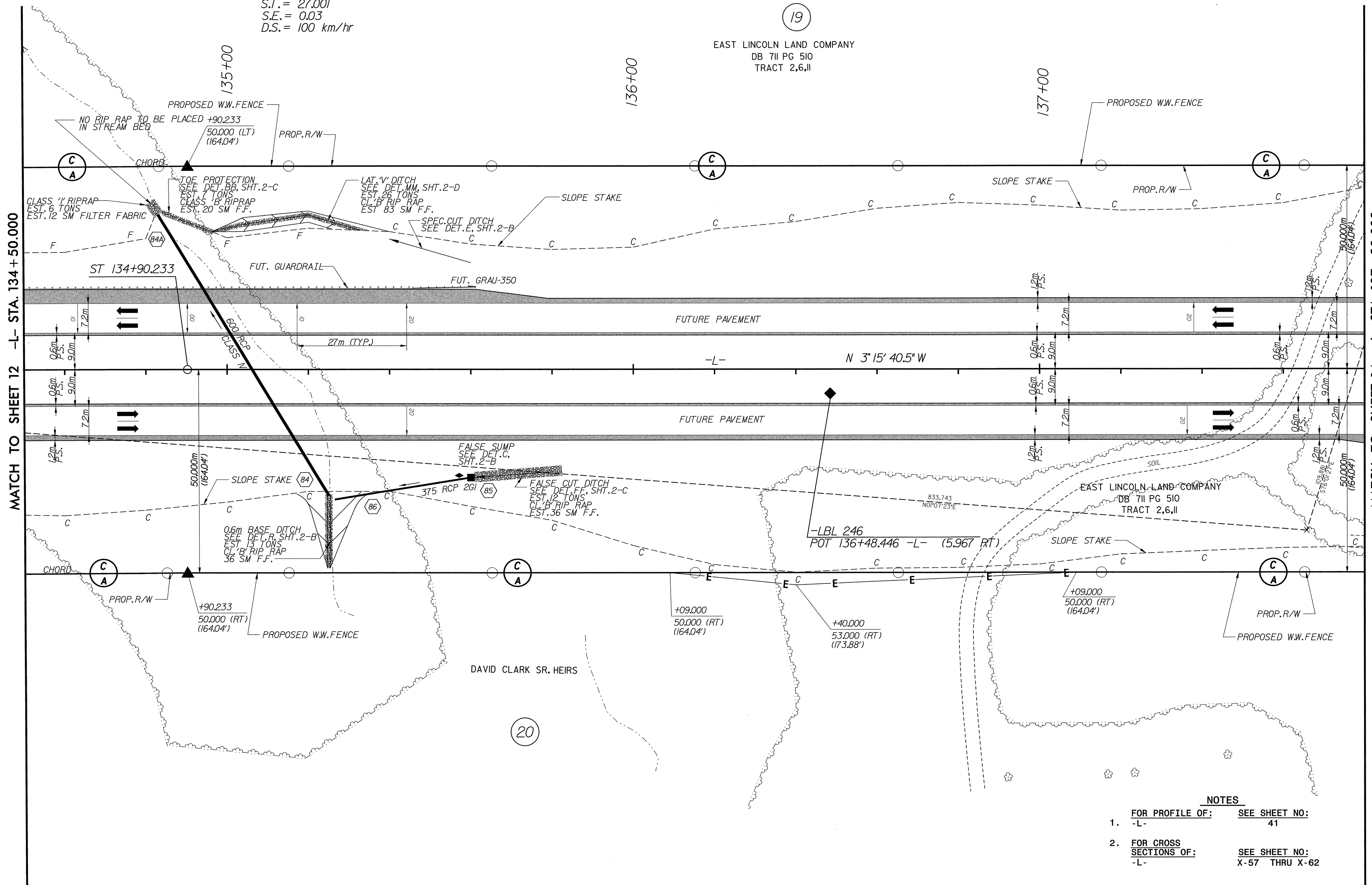
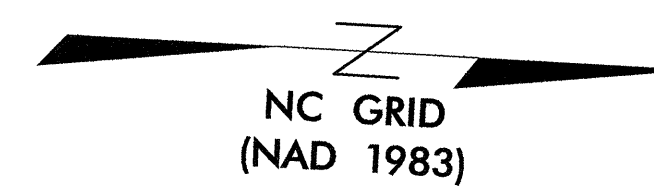


REVISIONS

-L-
 P.I. = 132+53.381
 $\Delta T = 11^{\circ} 17' 15.0''$ (RT)
 $\Delta C = 8^{\circ} 58' 01.3''$ (RT)
 $R_c = 2,000.000$
 $L_c = 313.009$
 $T_c = 156.824$
 $\theta_s = 1^{\circ} 09' 36.9''$
 $L_s = 81.000$
 $L.T. = 54.001$
 $S.T. = 27.001$
 $S.E. = 0.03$
 $D.S. = 100$ km/hr



PROJECT REFERENCE NO. R-2206B	SHEET NO. 13
ROADWAY DESIGN ENGINEER MERRICK A. DUGAN 022609	HYDRAULICS ENGINEER DOUGLAS R. SANDERS 14160
CONST. REV.	
R/W REV.	



- NOTES
- FOR PROFILE OF: SEE SHEET NO: -L- 41
 - FOR CROSS SECTIONS OF: SEE SHEET NO: -L- X-57 THRU X-62

DATE: STATES TIME: STATES FILES