
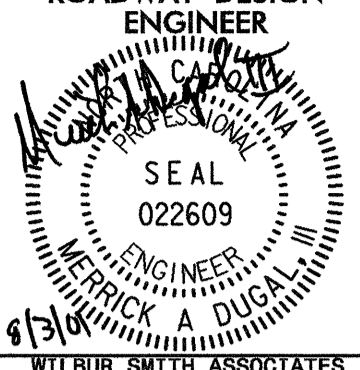
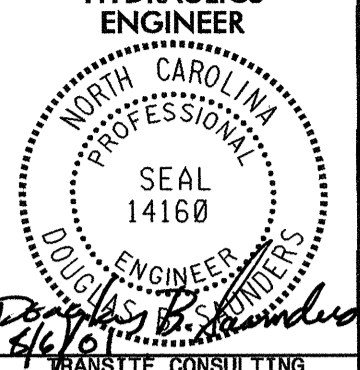


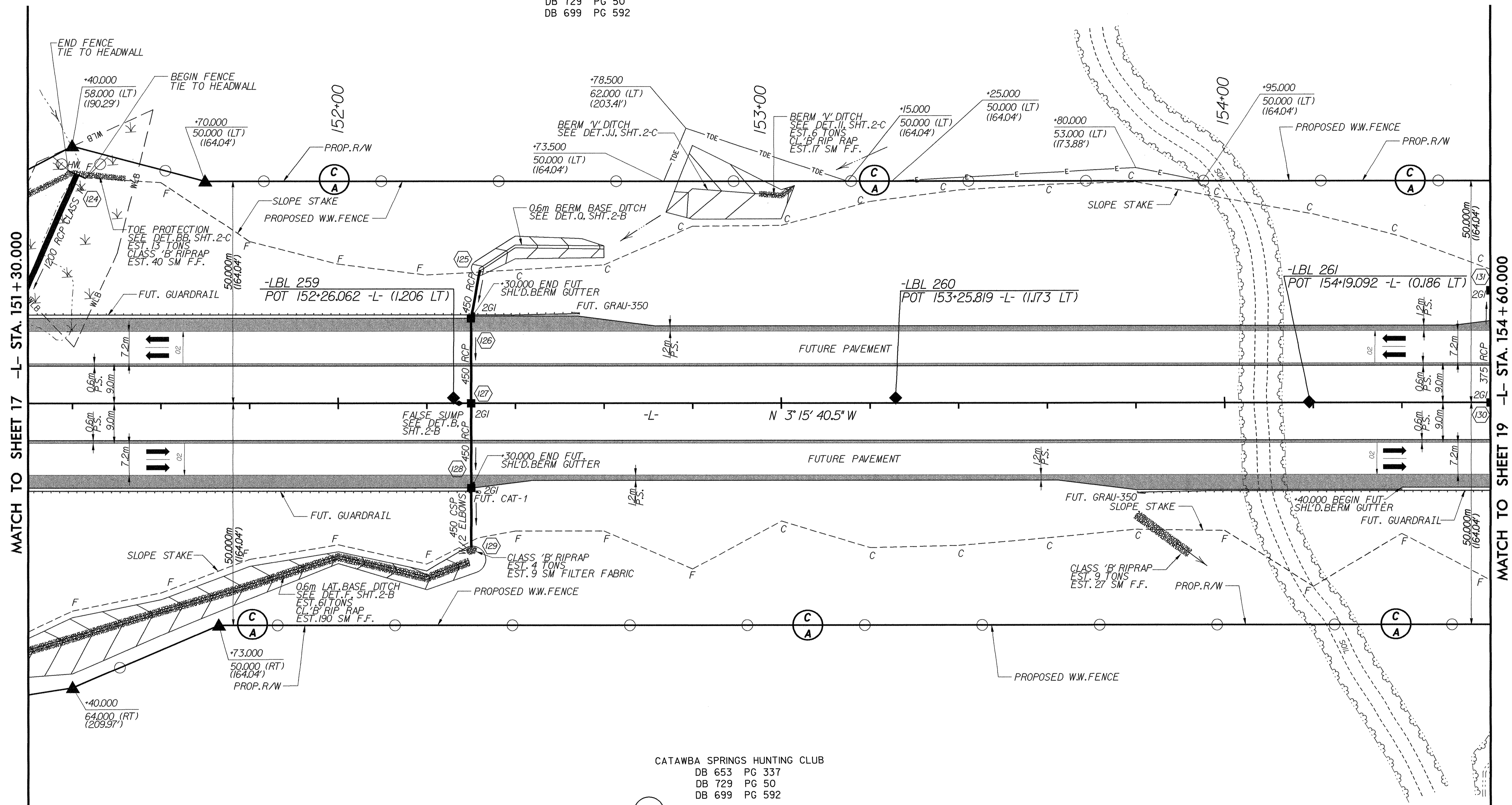
REVISIONS

 5 0 10	PROJECT REFERENCE NO.	SHEET NO.
	R-2206B	18
CONST.REV.	ROADWAY DESIGN ENGINEER	HYDRAULICS ENGINEER
R/W REV.	 SEAL 022609 METRICK, A. DUGAL ENGINEER	 SEAL 14160 DUGAL, B. S. S. S. ENGINEER
	WILBUR SMITH ASSOCIATES 1300 FABRICK DRIVE, SUITE 10-10 RALEIGH, N. C. 27602-2478	MARKET CONSULTING 1300 FABRICK DRIVE, SUITE 10-10 RALEIGH, N. C. 27602-2478



(25)

CATAWBA SPRINGS HUNTING CLUB
DB 653 PG 337
DB 729 PG 50
DB 699 PG 592



MATCH TO SHEET 17 -L- STA. 151 + 30.000

MATCH TO SHEET 19 -L- STA. 154 + 60.000

(25)

CATAWBA SPRINGS HUNTING CLUB
DB 653 PG 337
DB 729 PG 50
DB 699 PG 592

NOTES

- FOR PROFILE OF: SEE SHEET NO:
-L- 45, 46
- FOR CROSS SECTIONS OF: SEE SHEET NO:
-L- X-89 THRU X-95

DATE: 03 AUG 2001
TIME: 12:50:53
FILE: R-2206B.dwg