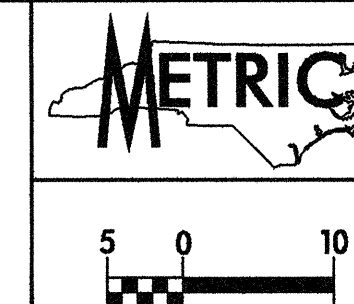
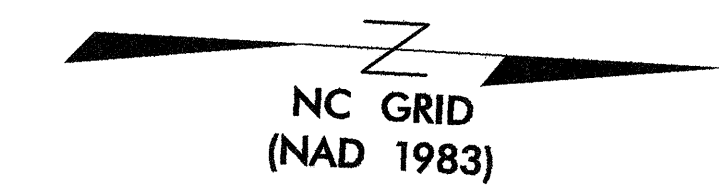


REVISIONS

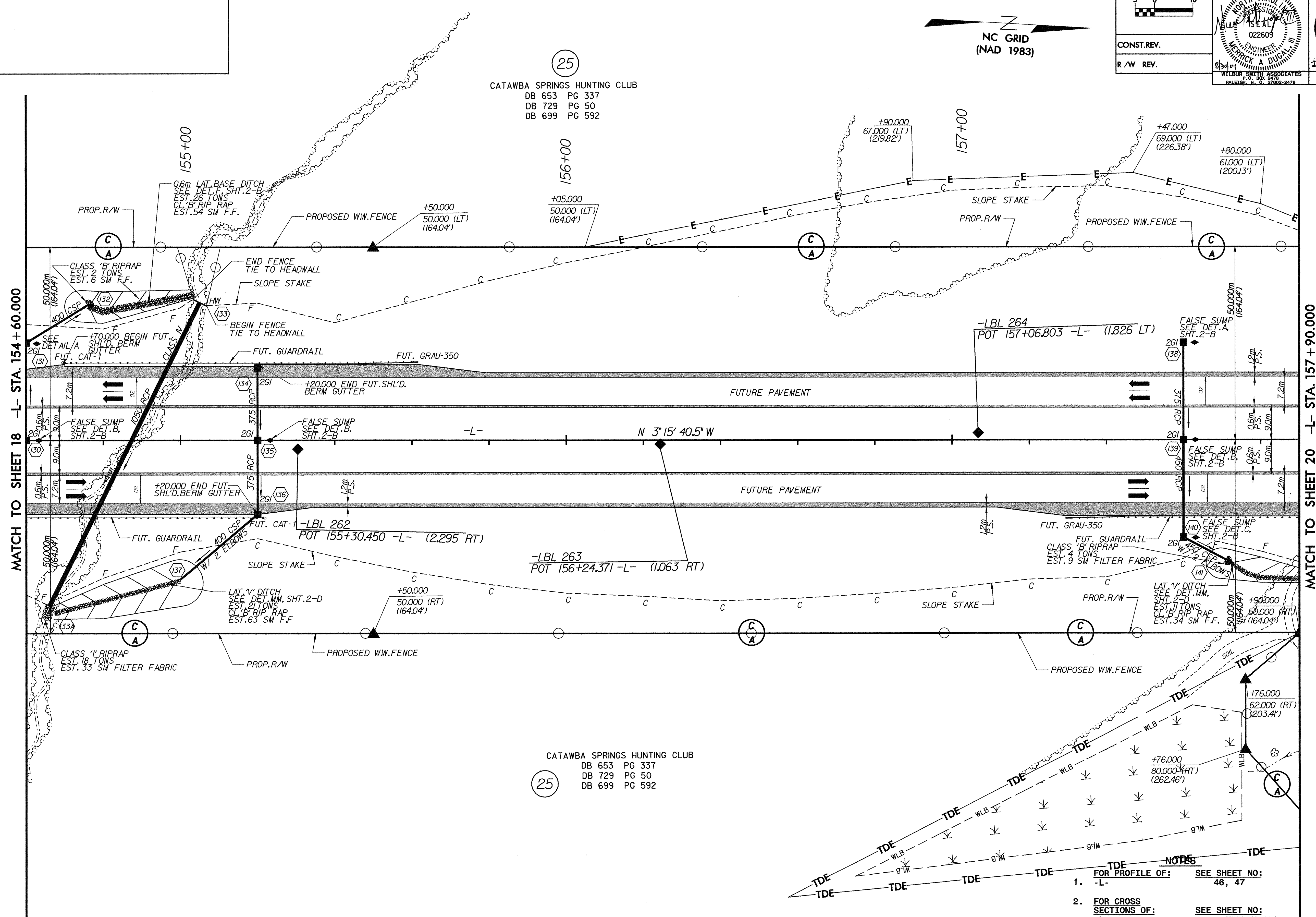


PROJECT REFERENCE NO.	R-22068	SHEET NO.	19
R/W SHEET NO.			
ROADWAY DESIGN ENGINEER	HYDRAULICS ENGINEER		
 MERRICK A. DUGAL 022609	 DOUGLAS S. UNDERHILL 14160		
CONST. REV.			
R/W REV.			
WILBUR SMITH ASSOCIATES 1300 W. GARRISON DRIVE, SUITE 4-10 RALEIGH, N. C. 27602-2678		TRANSLITE CONSULTING 1300 W. GARRISON DRIVE, SUITE 4-10 RALEIGH, N. C. 27602-2678	



(25)

CATAWBA SPRINGS HUNTING CLUB  
 DB 653 PG 337  
 DB 729 PG 50  
 DB 699 PG 592



(25)

CATAWBA SPRINGS HUNTING CLUB  
 DB 653 PG 337  
 DB 729 PG 50  
 DB 699 PG 592

- NOTES
- FOR PROFILE OF: SEE SHEET NO: 46, 47
  - FOR CROSS SECTIONS OF: SEE SHEET NO: X-95 THRU X-101

DATE: STATES TIME: STATES SPILES