
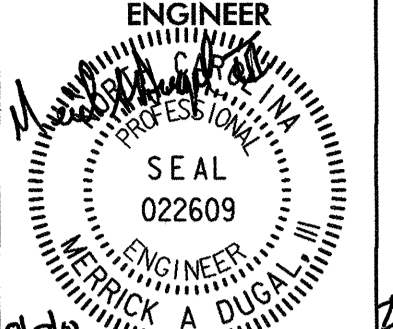
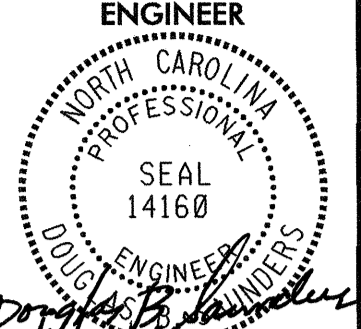
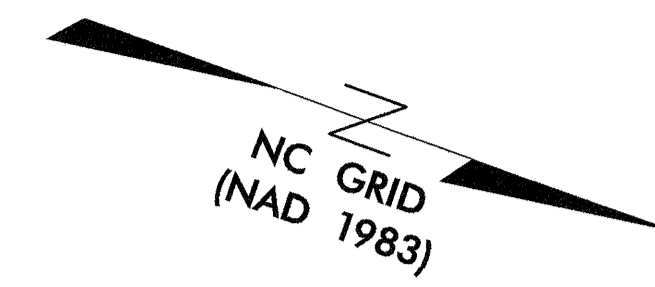
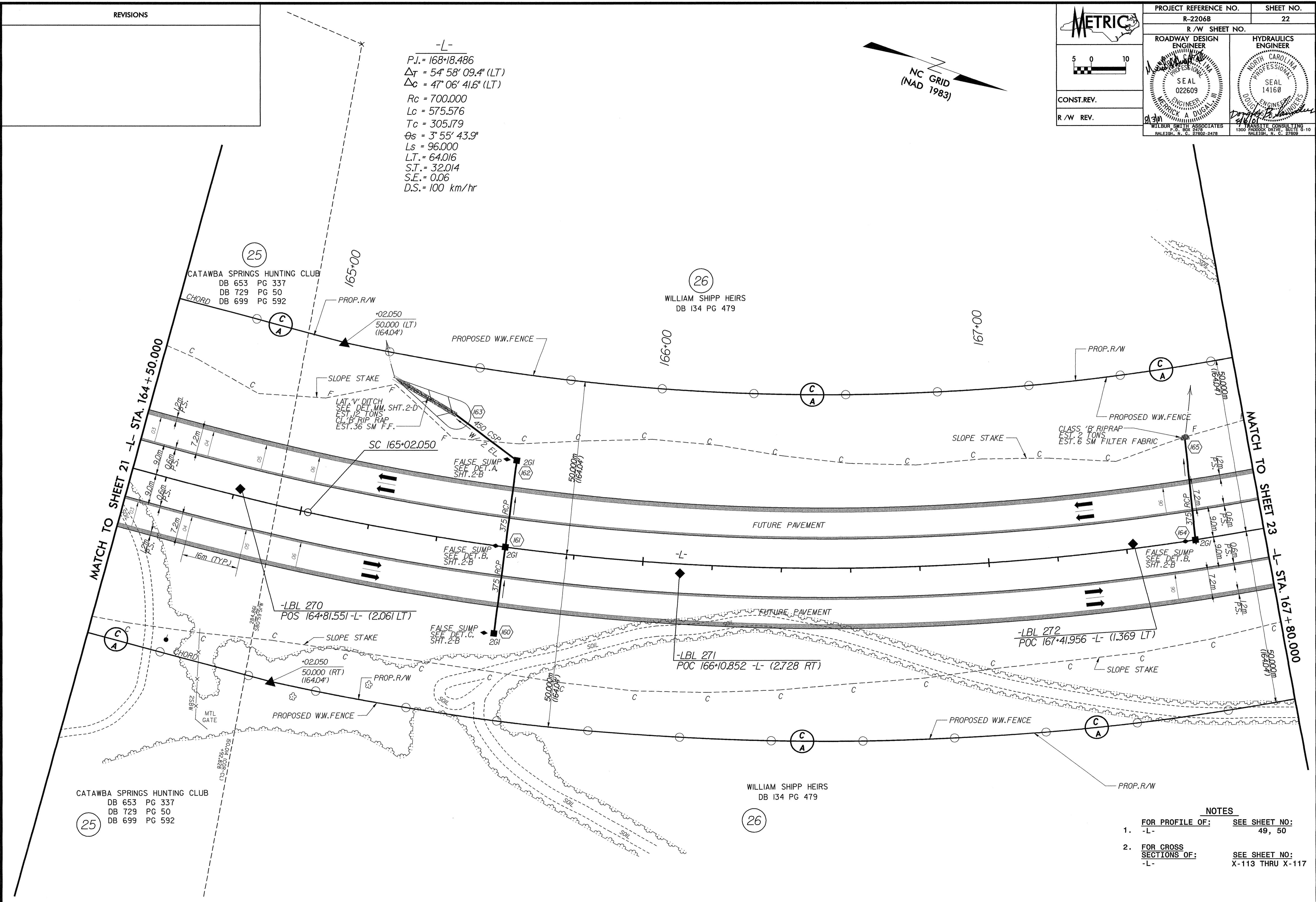


REVISIONS

| | | |
|--|--|---|
|  5 0 10 | PROJECT REFERENCE NO. | SHEET NO. |
| | R-2206B | 22 |
| CONST.REV. R/W REV. | ROADWAY DESIGN ENGINEER | HYDRAULICS ENGINEER |
| |  SEAL 022609 MERRICK A. DUGAL |  SEAL 14160 DOUGLAS L. HANDELMAN |
| | WILBUR SMITH ASSOCIATES P.O. BOX 2478 RALEIGH, N. C. 27602-2478 | TRANSITE CONSULTING 1300 PADDOCK DRIVE, SUITE G-10 RALEIGH, N. C. 27609 |



-L-
 $P.I. = 168+18.486$
 $\Delta T = 54^{\circ} 58' 09.4''$ (LT)
 $\Delta C = 47^{\circ} 06' 41.6''$ (LT)
 $R_c = 700.000$
 $L_c = 575.576$
 $T_c = 305.179$
 $\theta_s = 3^{\circ} 55' 43.9''$
 $L_s = 96.000$
 $L.T. = 64.016$
 $S.T. = 32.014$
 $S.E. = 0.06$
 $D.S. = 100$ km/hr



- NOTES**
- FOR PROFILE OF: -L- SEE SHEET NO: 49, 50
 - FOR CROSS SECTIONS OF: -L- SEE SHEET NO: X-113 THRU X-117

DATE: 03 AUG 2001
 TIME: 12:51:15
 FILE: P-2206b.dwg