

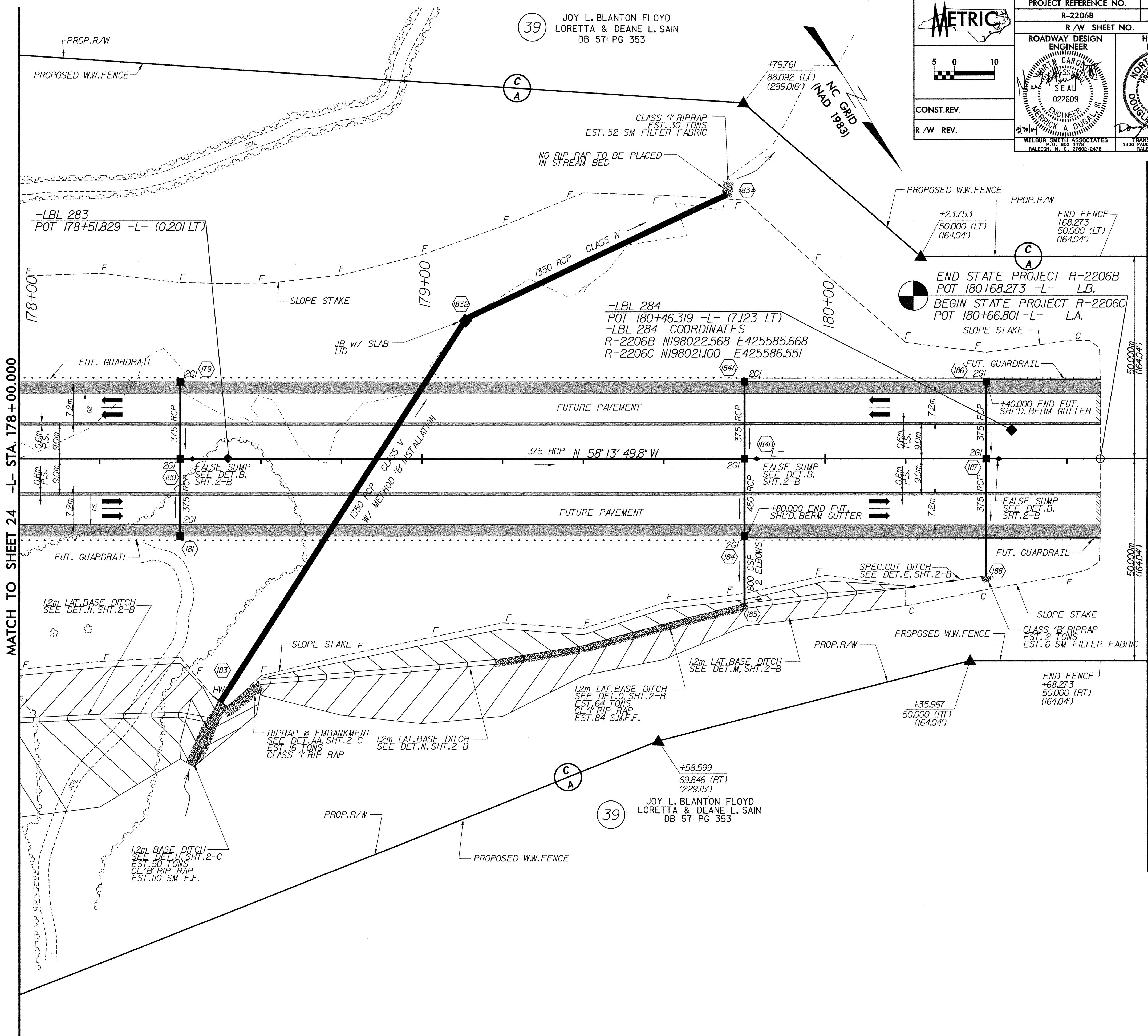
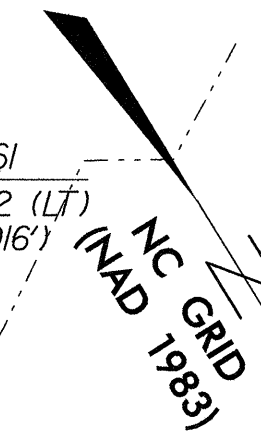
REVISIONS

**METRIC**

CONST. REV.  
R/W REV.

PROJECT REFERENCE NO. R-2206B	SHEET NO. 25
R/W SHEET NO.	
ROADWAY DESIGN ENGINEER	HYDRAULICS ENGINEER
WILBUR SMITH ASSOCIATES P.O. BOX 2478 RALEIGH, N. C. 27602-2478	TRANSITE CONSULTING 1300 PATTON DRIVE, SUITE 9-10 RALEIGH, N. C. 27609

39 JOY L. BLANTON FLOYD  
LORETTA & DEANE L. SAIN  
DB 571 PG 353



MATCH TO SHEET 24 -L- STA. 178+00.000

MATCH TO SHEET 26 -L- STA. 180+80.000

39 JOY L. BLANTON FLOYD  
LORETTA & DEANE L. SAIN  
DB 571 PG 353

DATE: 08/20/14  
SCALE: AS SHOWN  
SHEET: 25 OF 25