
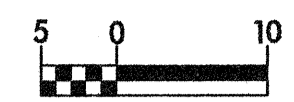
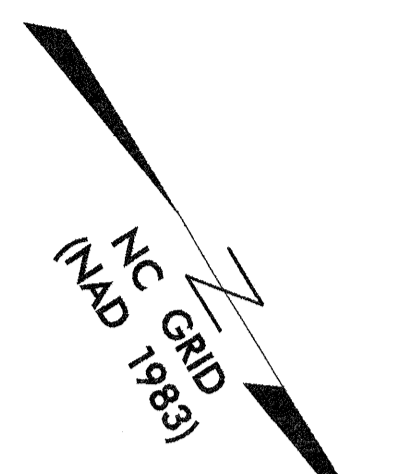


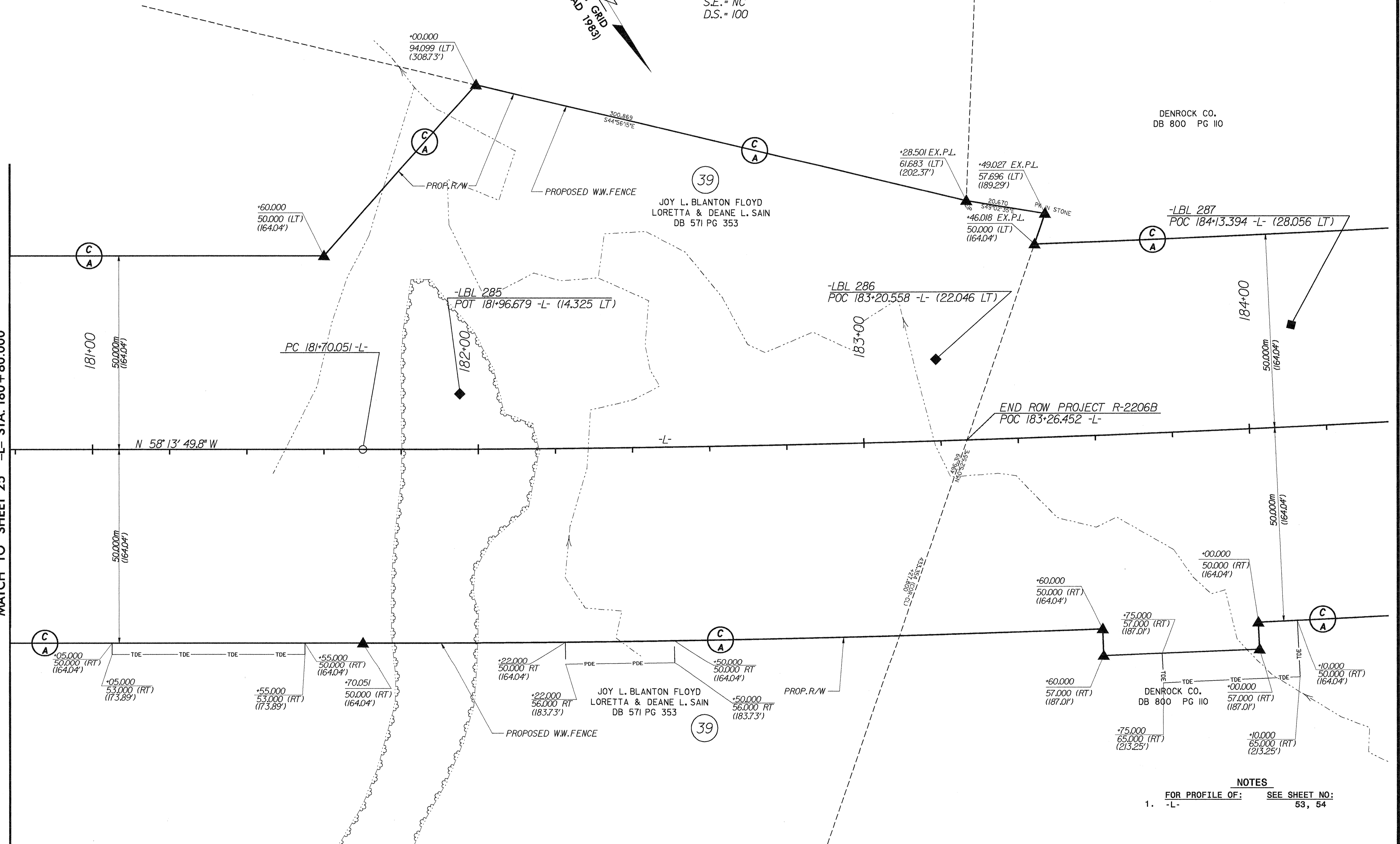
REVISIONS

 	PROJECT REFERENCE NO. R-2206B	SHEET NO. 26
	R/W SHEET NO.	
ROADWAY DESIGN ENGINEER SEAL 022609	HYDRAULICS ENGINEER SEAL 14160	
CONST.REV.		
R/W REV.		
<small>WILBUR SMITH ASSOCIATES 1300 PADDOCK DRIVE, SUITE 8-10 RALEIGH, N. C. 27602-2478</small>		<small>FRANKLIN CONSULTING 1300 PADDOCK DRIVE, SUITE 8-10 RALEIGH, N. C. 27602-2478</small>

-L-
 P.I. = 185+00.623
 $\Delta c = 7' 33" 54.5" (LT)$
 $R_c = 5,000.000$
 $L_c = 660.183$
 $T_c = 330.572$
 S.E. = NC
 D.S. = 100



MATCH TO SHEET 25 -L- STA. 180+80.000



DATE: 03 AUG 2001
 TIME: 13:17:43
 P:\R-2206B\Plan\26.sh

NOTES
 FOR PROFILE OF: SEE SHEET NO:
 1. -L- 53, 54