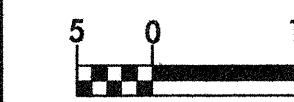


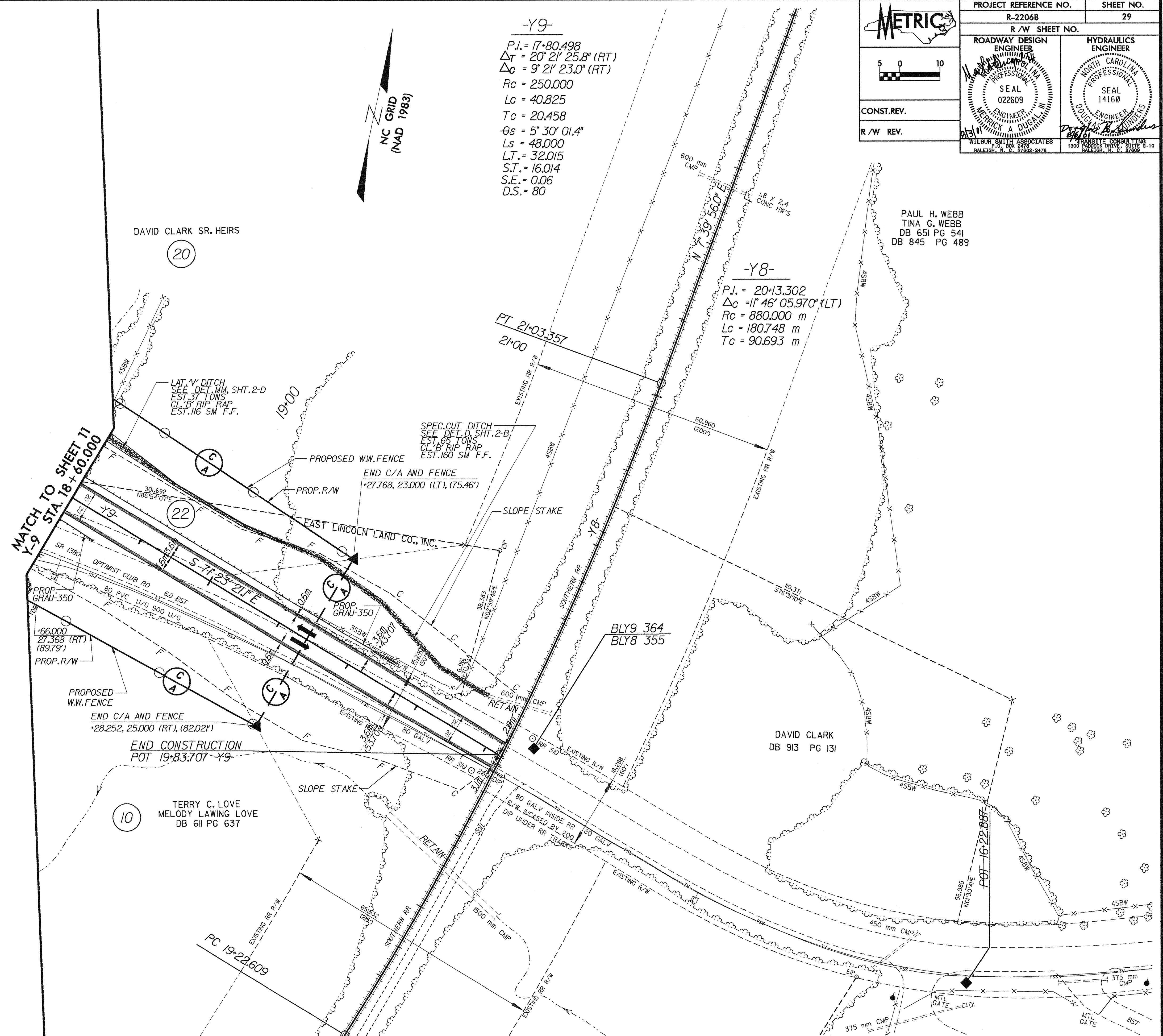


PROJECT REFERENCE NO. R-2206B	SHEET NO. 29
R/W SHEET NO.	
ROADWAY DESIGN ENGINEER SEAL 022609 WILBUR SMITH ASSOCIATES 2418 WILSON DRIVE, SUITE 3-10 RALEIGH, N. C. 27602-2478	HYDRAULICS ENGINEER SEAL 14160 FRANKLIN CONSULTING 1800 HARRISON DRIVE, SUITE 8-10 RALEIGH, N. C. 27609
CONST.REV.	
R/W REV.	



-Y9-
 P.J. = 17+80.498
 $\Delta T = 20^\circ 21' 25.8''$ (RT)
 $\Delta C = 9^\circ 21' 23.0''$ (RT)
 Rc = 250.000
 Lc = 40.825
 Tc = 20.458
 $\theta s = 5^\circ 30' 01.4''$
 Ls = 48.000
 L.T. = 32.015
 S.T. = 16.014
 S.E. = 0.06
 D.S. = 80

-Y8-
 P.J. = 20+13.302
 $\Delta c = 11^\circ 46' 05.970''$ (LT)
 Rc = 880.000 m
 Lc = 180.748 m
 Tc = 90.693 m



PAUL H. WEBB
 TINA G. WEBB
 DB 651 PG 541
 DB 845 PG 489

MATCH TO SHEET 11
 Y-9 STA. 18+60.000

DAVID CLARK SR. HEIRS
 (20)

(22)

(2)

(10)

- NOTES**
- FOR PROFILE OF: -Y9- SEE SHEET NO: 57
 - FOR CROSS SECTIONS OF: -Y9- SEE SHEET NO: X-161 THRU X-162