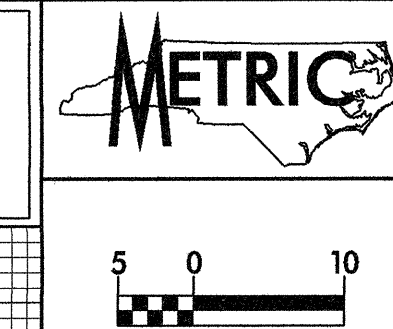
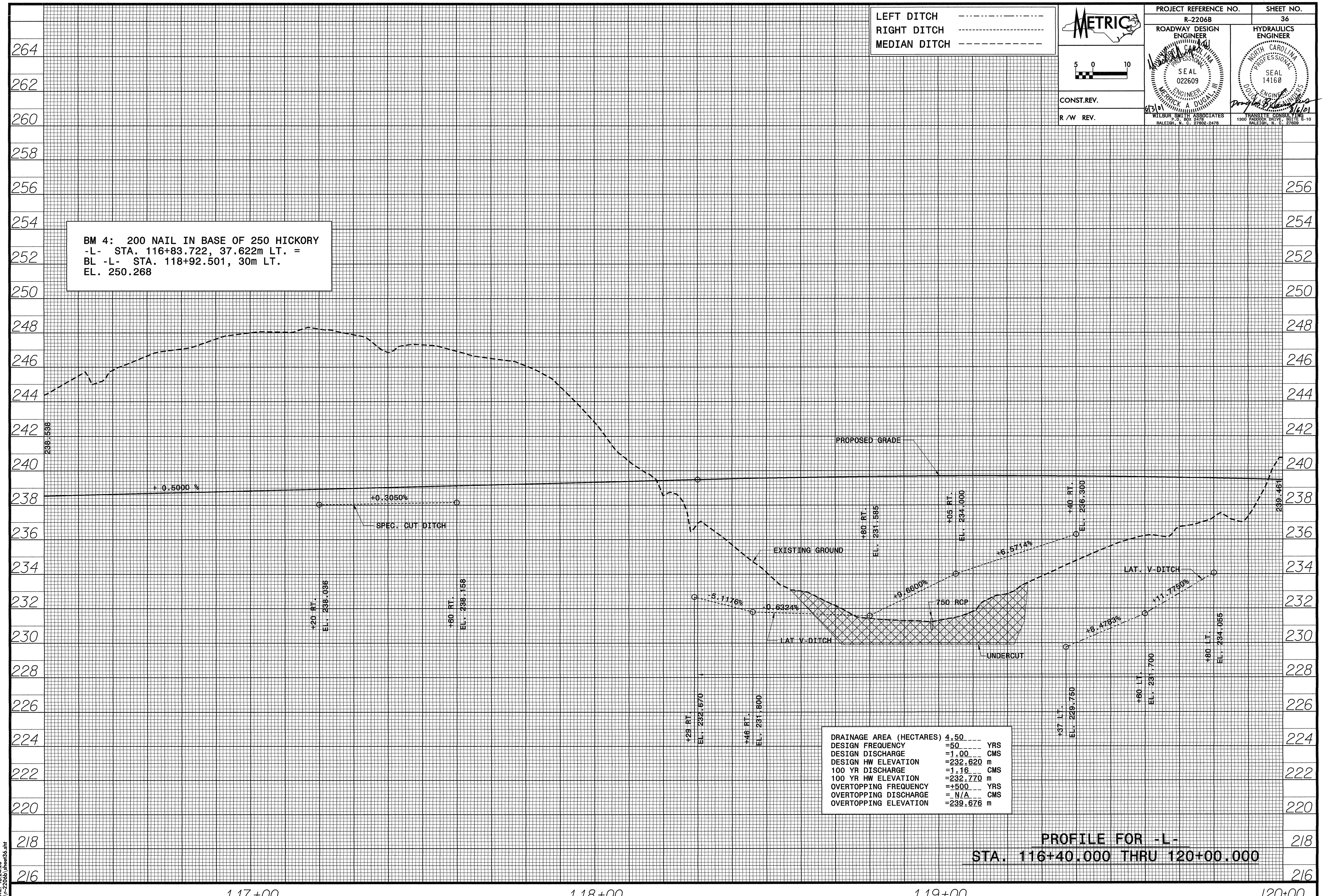


LEFT DITCH -----  
 RIGHT DITCH -----  
 MEDIAN DITCH -----



|  |  |
|--|--|
| PROJECT REFERENCE NO.<br>R-2206B   | SHEET NO.<br>36  |
| ROADWAY DESIGN ENGINEER<br>SEAL 022609<br>WILBUR SMITH ASSOCIATES<br>RALEIGH, N. C. 27602-2478 | HYDRAULICS ENGINEER<br>SEAL 14160<br>TRANSYLT CONSULTING<br>1300 PADDOCK DRIVE, SUITE G-10<br>RALEIGH, N. C. 27609 |

BM 4: 200 NAIL IN BASE OF 250 HICKORY  
 -L- STA. 116+83.722, 37.622m LT. =  
 BL -L- STA. 118+92.501, 30m LT.  
 EL. 250.268



|                          |            |
|--------------------------|------------|
| DRAINAGE AREA (HECTARES) | 4.50       |
| DESIGN FREQUENCY         | =50 YRS    |
| DESIGN DISCHARGE         | =1.00 CMS  |
| DESIGN HW ELEVATION      | =232.620 m |
| 100 YR DISCHARGE         | =1.16 CMS  |
| 100 YR HW ELEVATION      | =232.770 m |
| OVERTOPPING FREQUENCY    | =+500 YRS  |
| OVERTOPPING DISCHARGE    | = N/A CMS  |
| OVERTOPPING ELEVATION    | =239.676 m |

PROFILE FOR -L-  
 STA. 116+40.000 THRU 120+00.000

DATE: 02 AUG. 2001  
 TIME: 18:24:26  
 P:\2206b\shw36.shr