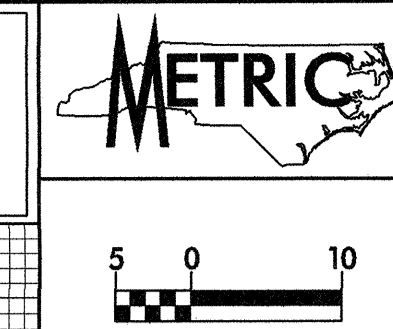


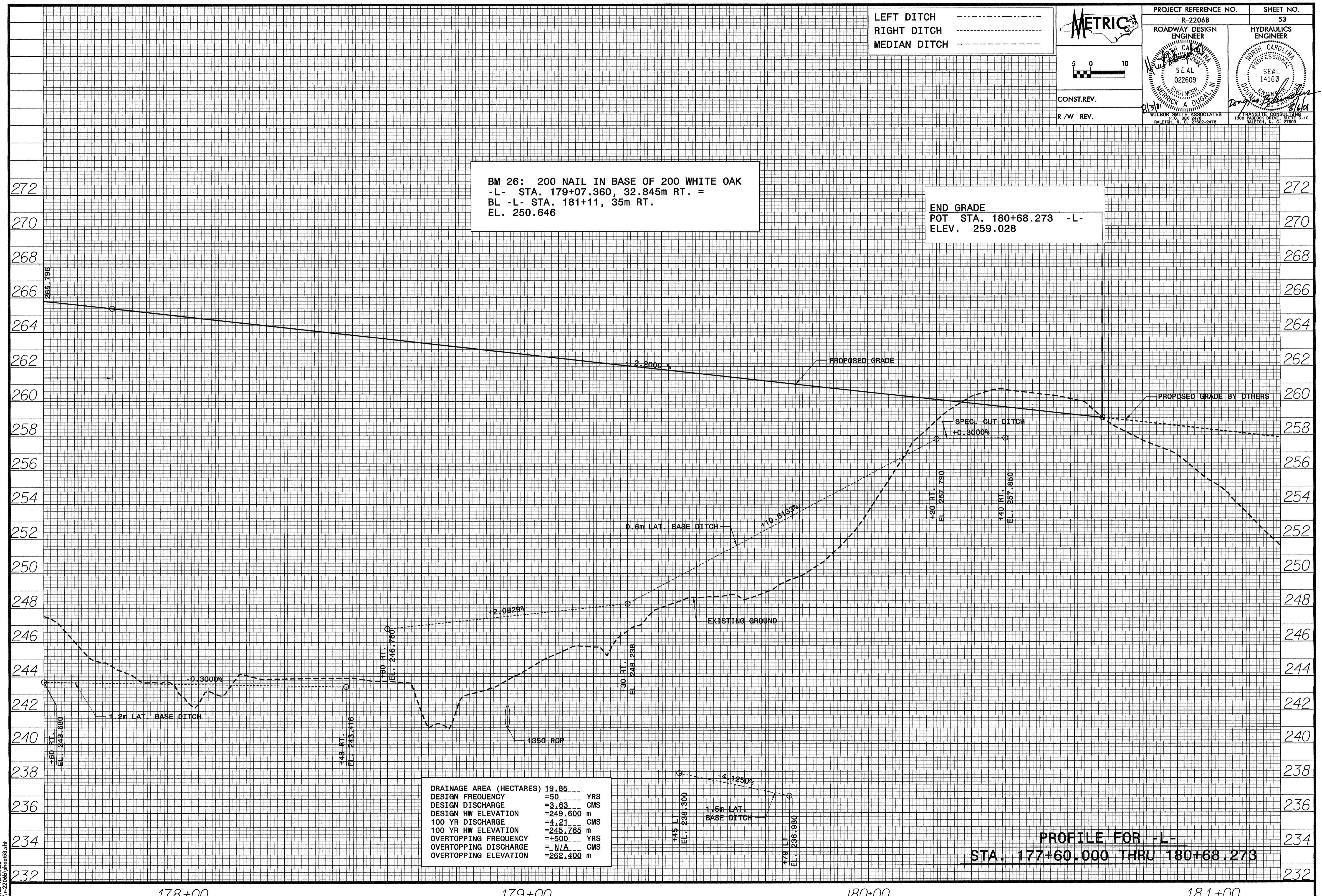
LEFT DITCH -----  
 RIGHT DITCH -----  
 MEDIAN DITCH -----



PROJECT REFERENCE NO. R-2206B	SHEET NO. 53
ROADWAY DESIGN ENGINEER SEAL 022609	HYDRAULICS ENGINEER SEAL 14168
CONST. REV.	
R / W REV.	

BM 26: 200 NAIL IN BASE OF 200 WHITE OAK  
 -L- STA. 179+07.360, 32.845m RT. =  
 BL -L- STA. 181+11, 35m RT.  
 EL. 250.646

END GRADE  
 POT STA. 180+68.273 -L-  
 ELEV. 259.028



DRAINAGE AREA (HECTARES)	19.85	---
DESIGN FREQUENCY	=50	YRS
DESIGN DISCHARGE	=3.63	CMS
DESIGN HW ELEVATION	=249.600	m
100 YR DISCHARGE	=4.21	CMS
100 YR HW ELEVATION	=245.765	m
OVERTOPPING FREQUENCY	=+500	YRS
OVERTOPPING DISCHARGE	= N/A	CMS
OVERTOPPING ELEVATION	=262.400	m

PROFILE FOR -L-  
 STA. 177+60.000 THRU 180+68.273

DATE: 02 AUG 2001  
 TIME: 18:24:56  
 P:\1-2206B\shnef33.sh