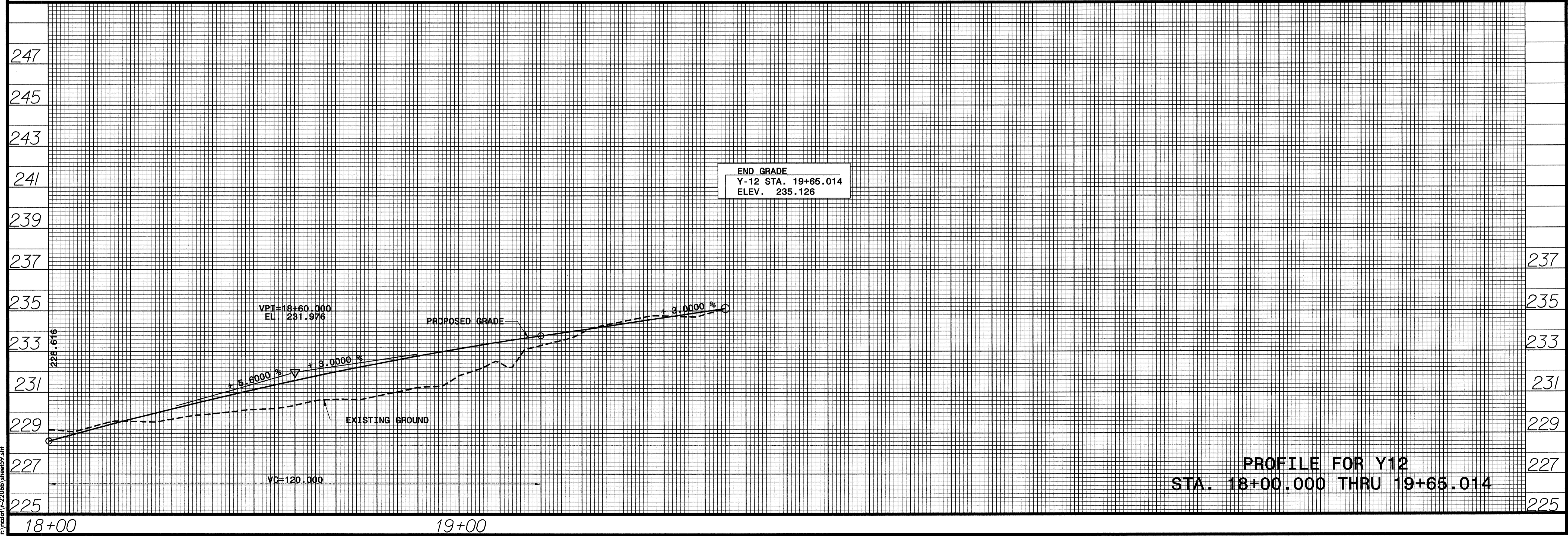
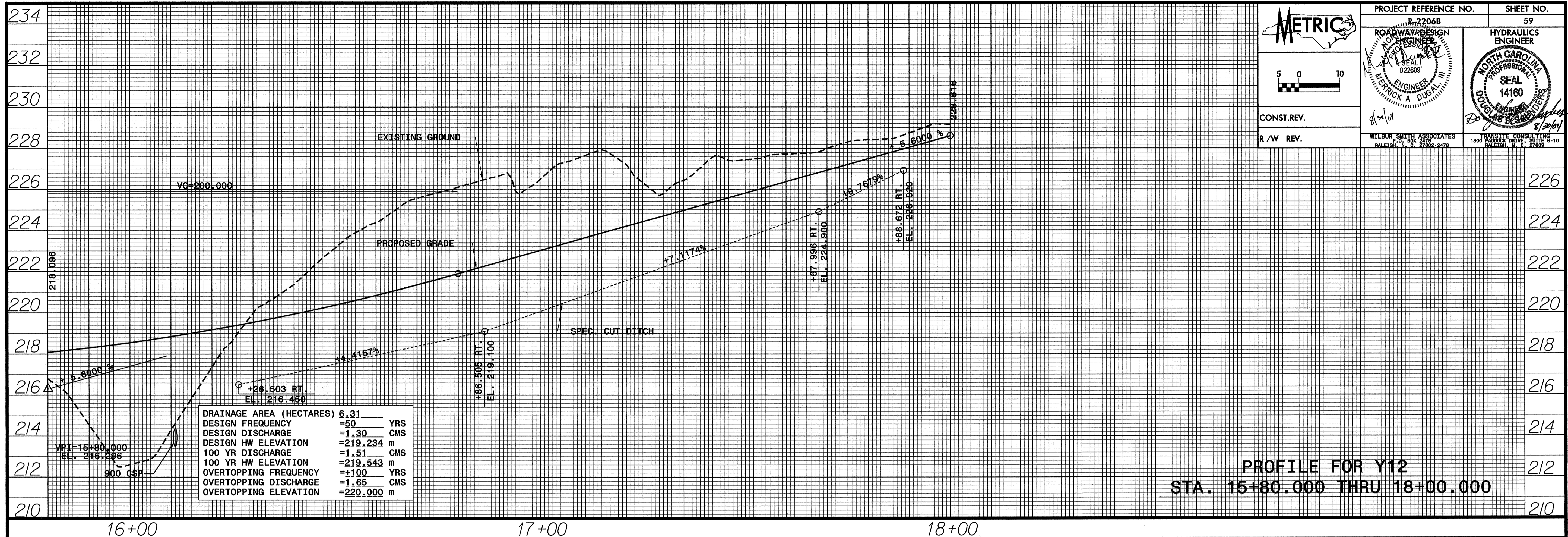


PROJECT REFERENCE NO. R-2206B	SHEET NO. 59
ROADWAY DESIGN ENGINEER 022609	HYDRAULICS ENGINEER NORTH CAROLINA PROFESSIONAL SEAL 14160
CONST. REV.	
R / W REV.	
WILBUR SMITH ASSOCIATES P.O. BOX 2476 RALEIGH, N.C. 27602-2476	TRANSITE CONSULTING 1300 PADDOCK DRIVE, SUITE 8-10 RALEIGH, N.C. 27609



DATE: 7/14/03  
TIME: 10:41:03 AM  
r:\ncad\p\2206b\sheet59.dwg