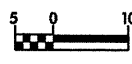
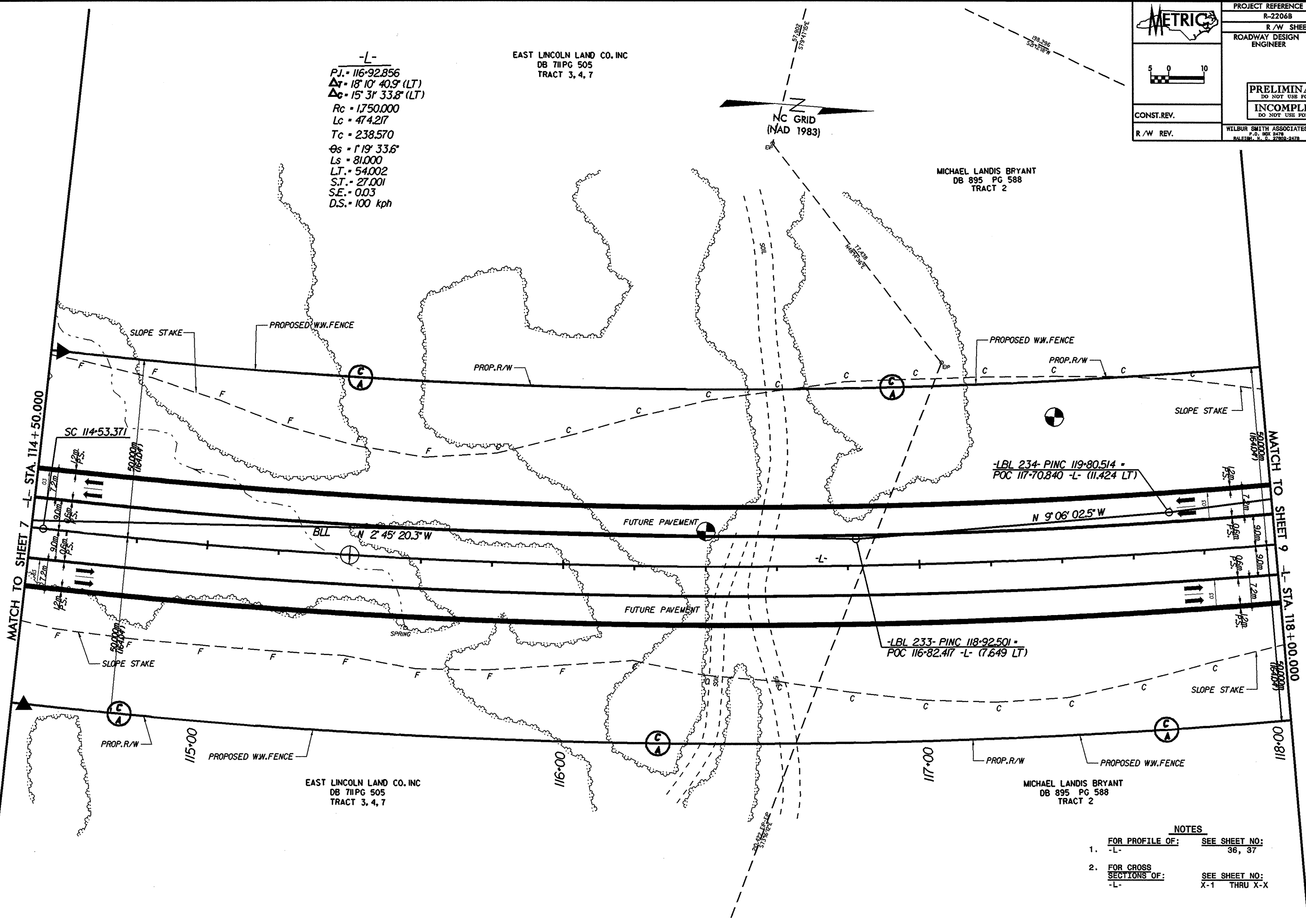
	PROJECT REFERENCE NO.	SHEET NO.
	R-2206B	8
	R / W SHEET NO.	
	ROADWAY DESIGN ENGINEER	HYDRAULICS ENGINEER
CONST.REV. R / W REV.	<b>PRELIMINARY PLANS</b> DO NOT USE FOR CONSTRUCTION <b>INCOMPLETE PLANS</b> DO NOT USE FOR R/W ACQUISITION	
	WILBUR SMITH ASSOCIATES P.O. BOX 2478 RALEIGH, N. C. 27602-2478	TRANSTATE CONSULTING 1900 PADDOCK DRIVE, SUITE 8-10 RALEIGH, N. C. 27609

-L-  
 P.I. = 116-92.856  
 $\Delta r = 18^{\circ} 10' 40.9" (LT)$   
 $\Delta c = 15^{\circ} 31' 33.8" (LT)$   
 Rc = 1750.000  
 Lc = 474.217  
 Tc = 238.570  
 $\theta_s = 1^{\circ} 19' 33.6"$   
 Ls = 81.000  
 LT = 54.002  
 S.T. = 27.001  
 S.E. = 0.03  
 D.S. = 100 kph

EAST LINCOLN LAND CO. INC  
 DB 711PG 505  
 TRACT 3, 4, 7

NC GRID  
 (NAD 1983)

MICHAEL LANDIS BRYANT  
 DB 895 PG 588  
 TRACT 2



-LBL 234- P.I.N.C 119-80.514 -  
 P.O.C 117-70.840 -L- (11,424 LT)

-LBL 233- P.I.N.C 118-92.501 -  
 P.O.C 116-82.417 -L- (7,649 LT)

- NOTES**
- FOR PROFILE OF: -L- SEE SHEET NO: 36, 37
  - FOR CROSS SECTIONS OF: -L- SEE SHEET NO: X-1 THRU X-X