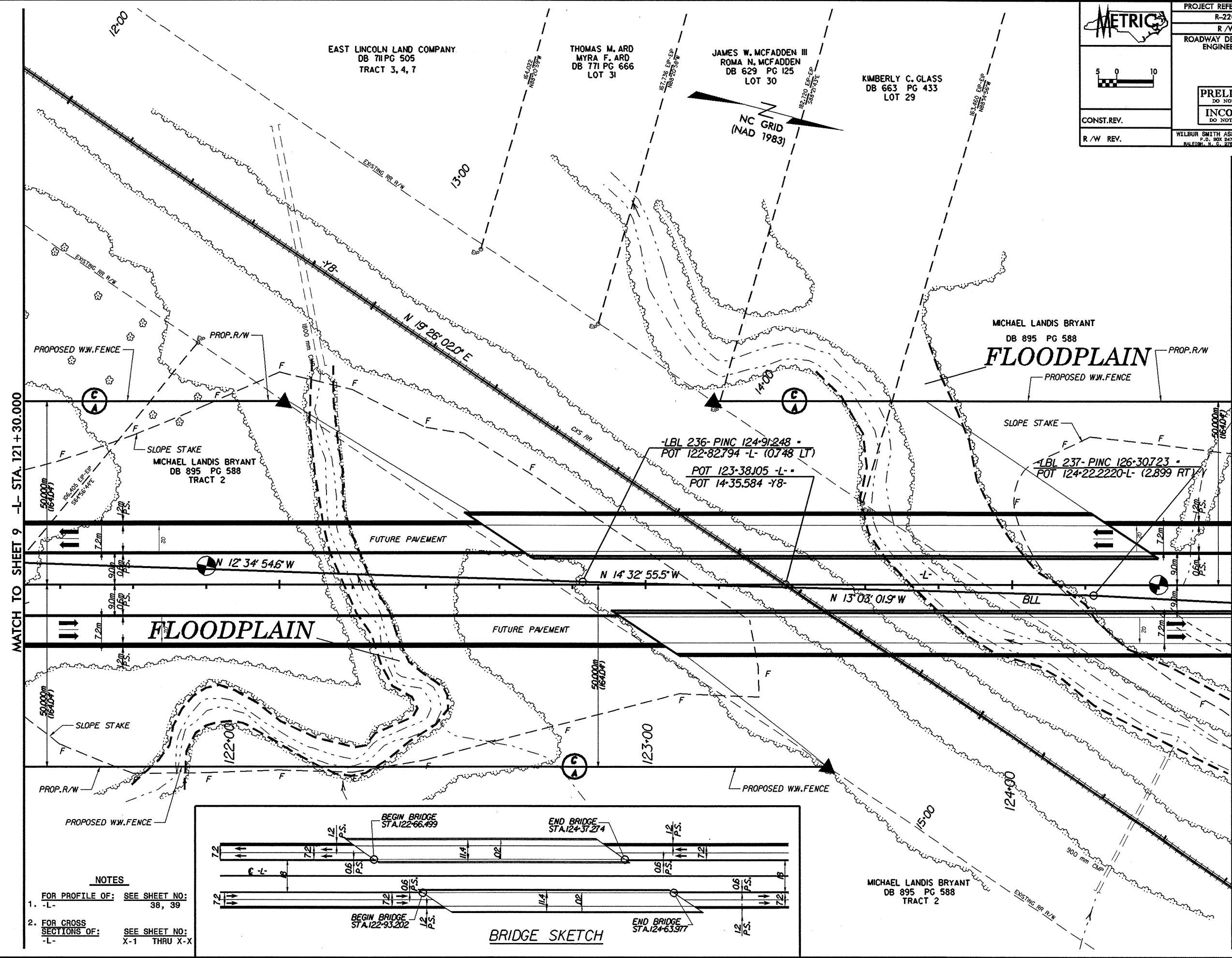
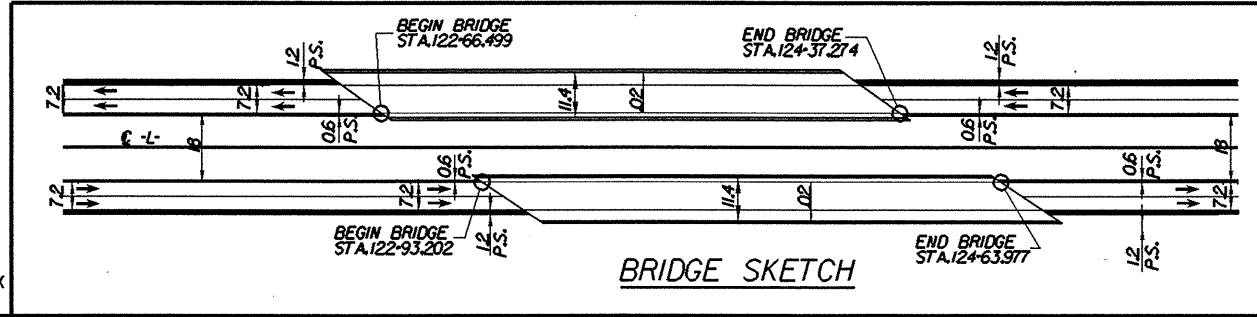
	PROJECT REFERENCE NO. R-2206B	SHEET NO. 10
	R/W SHEET NO.	
ROADWAY DESIGN ENGINEER	HYDRAULICS ENGINEER	
PRELIMINARY PLANS DO NOT USE FOR CONSTRUCTION		
INCOMPLETE PLANS DO NOT USE FOR R/W ACQUISITION		
CONST. REV.	WILBUR SMITH ASSOCIATES P.O. BOX 2478 RALEIGH, N. C. 27602-2478	
R/W REV.	TRANSITE CONSULTING 1900 PARKWOOD DRIVE, SUITE 8-10 RALEIGH, N. C. 27609	



MATCH TO SHEET 9 -L- STA. 121+30.000

MATCH TO SHEET 11 -L- STA. 124+60.000

- NOTES**
- FOR PROFILE OF: SEE SHEET NO:
-L- 38, 39
 - FOR CROSS SECTIONS OF: SEE SHEET NO:
-L- X-1 THRU X-X



MICHAEL LANDIS BRYANT
DB 895 PG 588
TRACT 2