
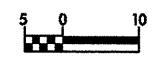
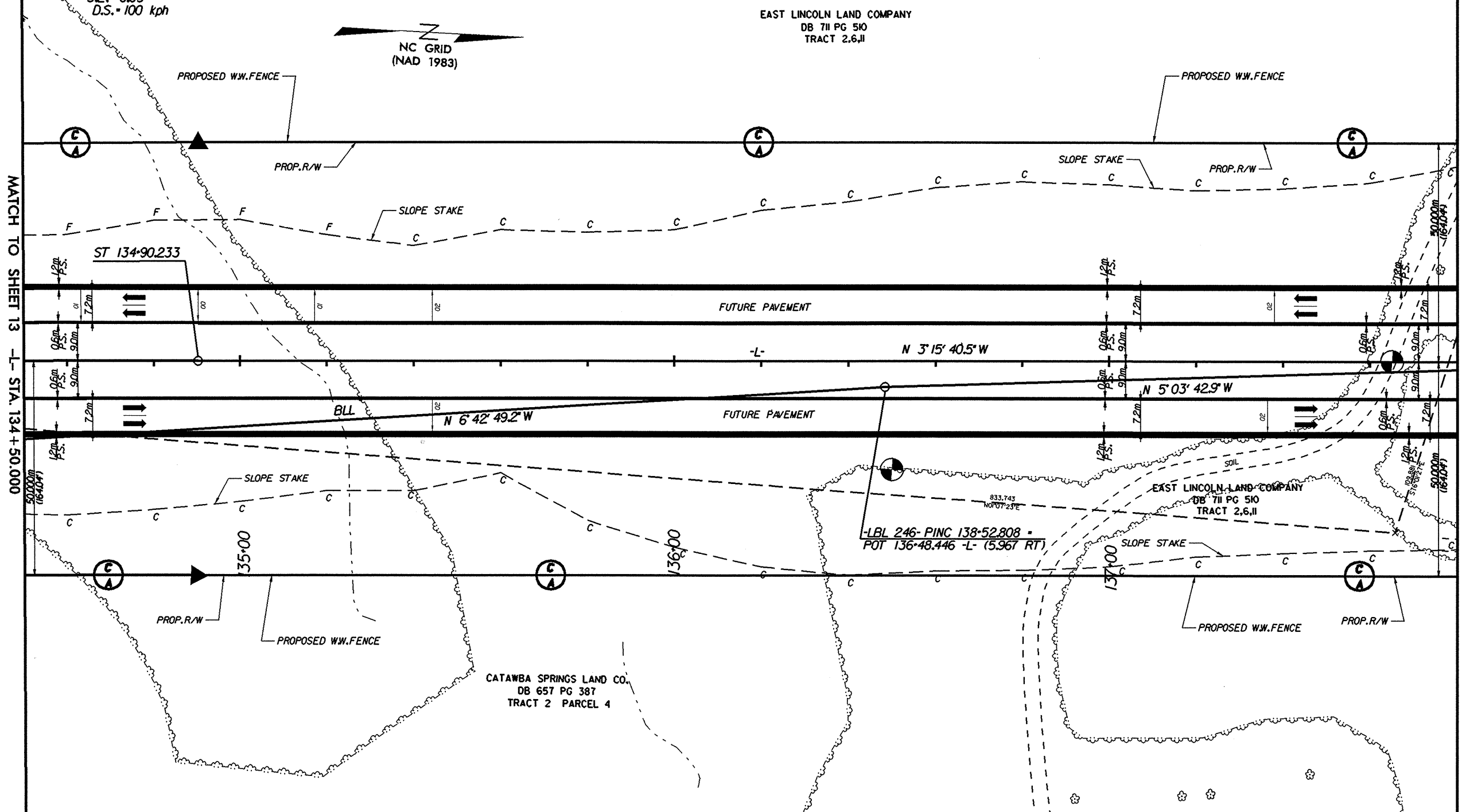


-L-
 P.I. = 132+53.381
 $\Delta T = 11' 17" 15.0" (RT)$
 $\Delta C = 8' 58" 01.3" (RT)$
 $R_c = 2,000.000$
 $L_c = 313.009$
 $T_c = 156.824$
 $\theta_s = 1' 09" 36.9"$
 $L_s = 81.000$
 $L.T. = 54.001$
 $S.T. = 27.001$
 $S.E. = 0.03$
 $D.S. = 100 \text{ kph}$

 	PROJECT REFERENCE NO. R-2206B	SHEET NO. 14
	R/W SHEET NO.	
ROADWAY DESIGN ENGINEER	HYDRAULICS ENGINEER	
PRELIMINARY PLANS DO NOT USE FOR CONSTRUCTION INCOMPLETE PLANS DO NOT USE FOR R/W ACQUISITION		
CONST.REV.	R/W REV.	
WILBUR SMITH ASSOCIATES P.O. BOX 2419 RALEIGH, N.C. 27602-2419		TRANSITE CONSULTING 1900 PARKWAY DRIVE, SUITE 0-10 RALEIGH, N.C. 27602



- NOTES**
- FOR PROFILE OF: -L- SEE SHEET NO: 42
 - FOR CROSS SECTIONS OF: -L- SEE SHEET NO: X-1 THRU X-X