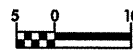
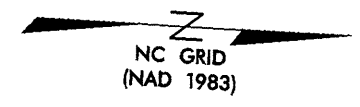
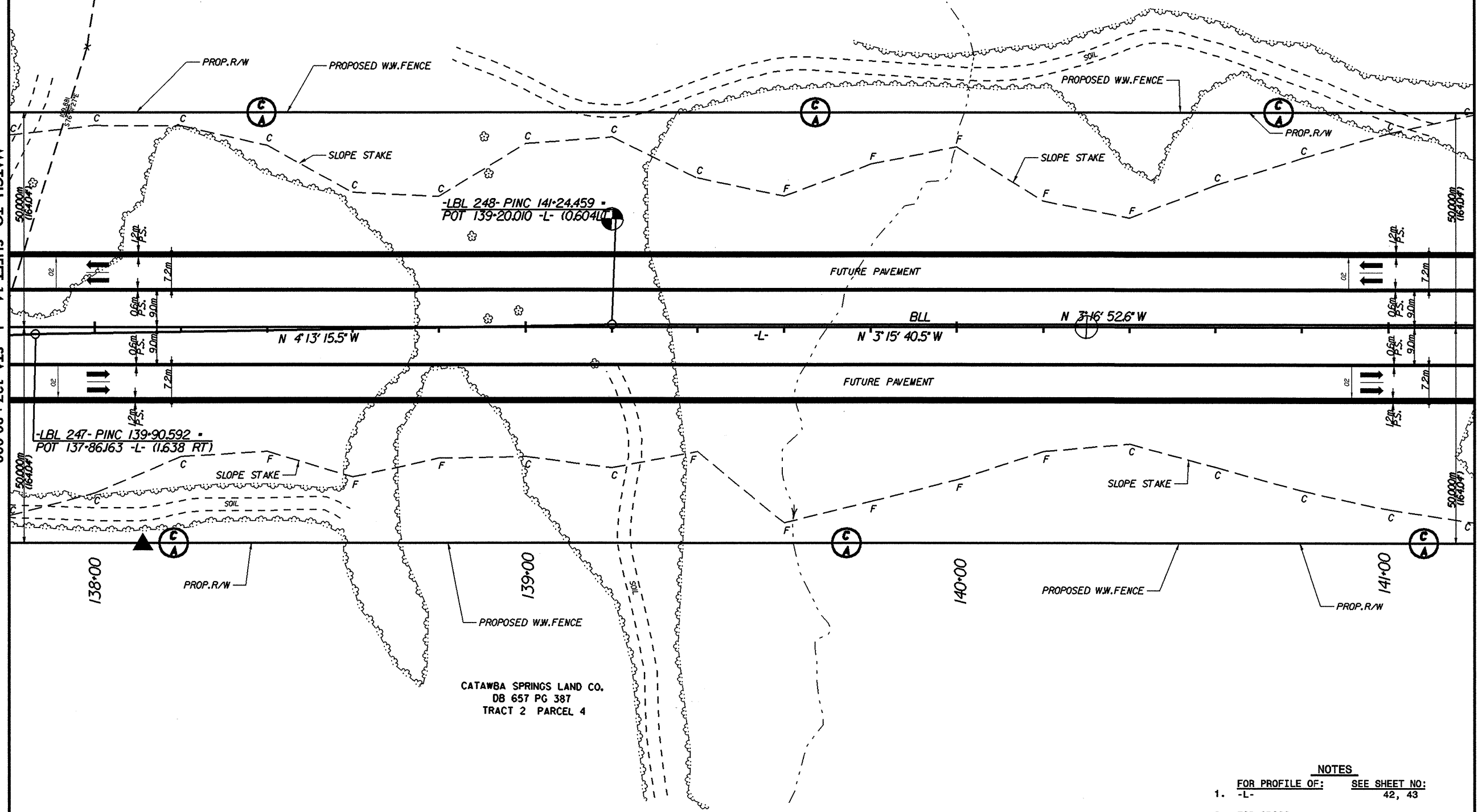
	PROJECT REFERENCE NO. R-2206B	SHEET NO. 15
	R/W SHEET NO.	
	ROADWAY DESIGN ENGINEER	HYDRAULICS ENGINEER
	PRELIMINARY PLANS DO NOT USE FOR CONSTRUCTION INCOMPLETE PLANS DO NOT USE FOR R/W ACQUISITION	
CONST. REV.	WILBUR SMITH ASSOCIATES P.O. BOX 2478 RALEIGH, N.C. 27602-2478	TRANSITE CONSULTING 1900 PARKWOOD DRIVE, SUITE 8-10 RALEIGH, N.C. 27609
R/W REV.		

CATAWBA SPRINGS LAND CO.
DB 657 PG 387
PARCEL 5



MATCH TO SHEET 14 - STA. 137+80.000

MATCH TO SHEET 16 - STA. 141+20.000



-LBL 247- PINC 139-90592 -
POT 137-86163 -L- (11638 RT)

-LBL 248- PINC 141-24459 -
POT 139-20010 -L- (10604 LT)

CATAWBA SPRINGS LAND CO.
DB 657 PG 387
TRACT 2 PARCEL 4

- NOTES**
- FOR PROFILE OF: -L- SEE SHEET NO: 42, 43
 - FOR CROSS SECTIONS OF: -L- SEE SHEET NO: X-1 THRU X-X