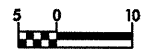
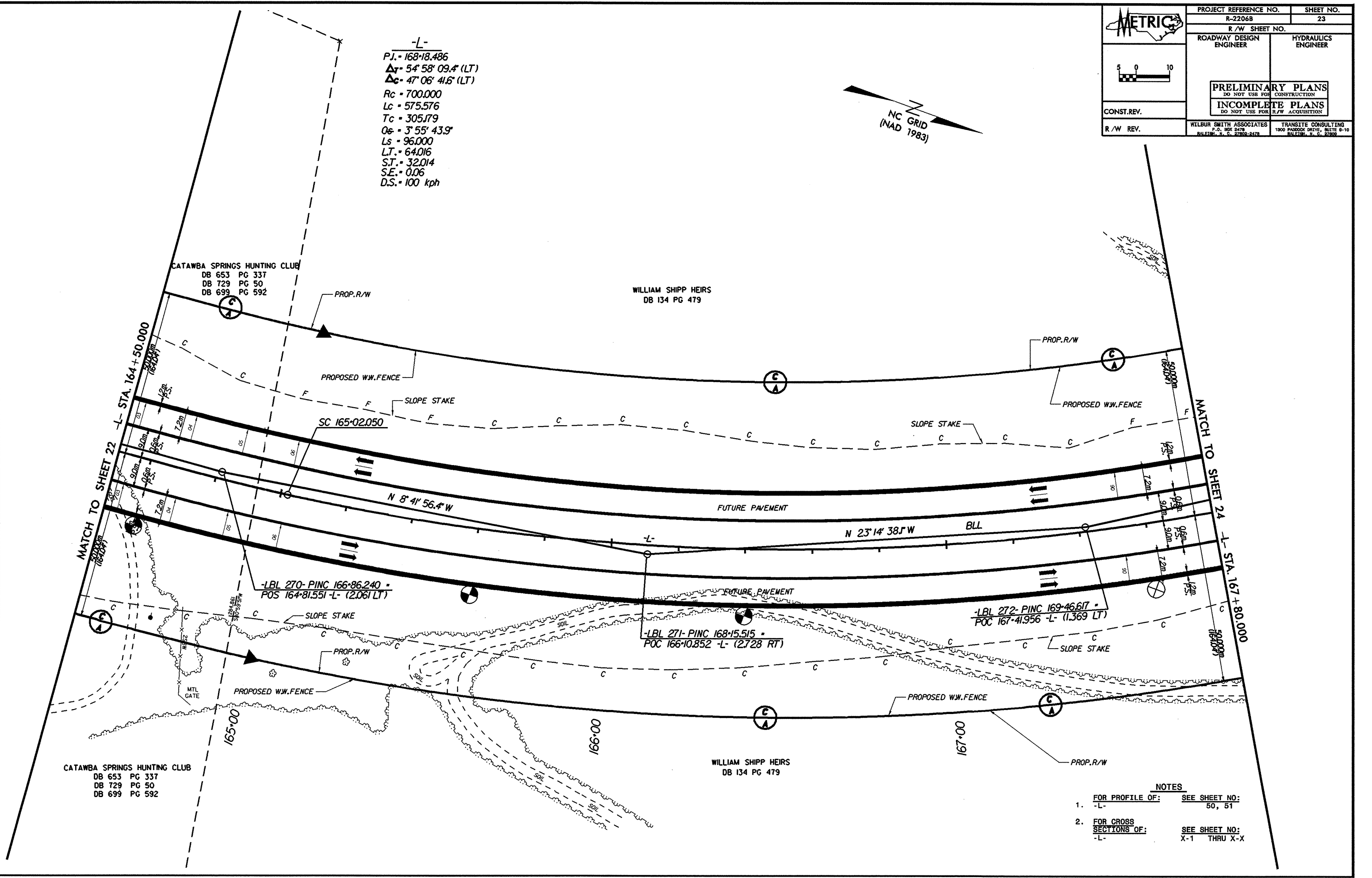
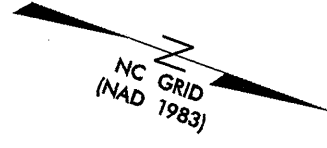
	PROJECT REFERENCE NO.	SHEET NO.
	R-2206B	23
	R/W SHEET NO.	
	ROADWAY DESIGN ENGINEER	HYDRAULICS ENGINEER
CONST. REV.	PRELIMINARY PLANS DO NOT USE FOR CONSTRUCTION	
	INCOMPLETE PLANS DO NOT USE FOR R/W ACQUISITION	
R/W REV.	WILBUR SMITH ASSOCIATES P.O. BOX 2478 RALEIGH, N. C. 27602-2478	TRANSITE CONSULTING 1300 PARSONS DRIVE, SUITE 8-10 RALEIGH, N. C. 27609

-L-
 P.I. = 168+18.486
 $\Delta T = 54^{\circ} 58' 09.4" (LT)$
 $\Delta C = 47^{\circ} 06' 41.6" (LT)$
 $R_c = 700.000$
 $L_c = 575.576$
 $T_c = 305.179$
 $O_s = 3^{\circ} 55' 43.9"$
 $L_s = 96.000$
 $L.T. = 64.016$
 $S.T. = 32.014$
 $S.E. = 0.06$
 $D.S. = 100 \text{ kph}$



- NOTES**
- FOR PROFILE OF: -L- SEE SHEET NO: 50, 51
 - FOR CROSS SECTIONS OF: -L- SEE SHEET NO: X-1 THRU X-X