

METRIC

CONST. REV.

R/W REV.

PROJECT REFERENCE NO. R-2206B	SHEET NO. 25
R/W SHEET NO.	
ROADWAY DESIGN ENGINEER	HYDRAULICS ENGINEER
PRELIMINARY PLANS DO NOT USE FOR CONSTRUCTION	
INCOMPLETE PLANS DO NOT USE FOR R/W ACQUISITION	
WILBUR SMITH ASSOCIATES P.O. BOX 2478 RALEIGH, N. C. 27602-2478	TRANSITE CONSULTING 1300 PARSON DRIVE, SUITE 8-10 RALEIGH, N. C. 27609

-L-
 P.J. = 168-18.486
 $\Delta T = 54^{\circ} 58' 09.4''$ (LT)
 $\Delta C = 47^{\circ} 06' 41.6''$ (LT)
 Rc = 700.000
 Lc = 575.576
 Tc = 305.179
 Oe = 3' 55' 43.9"
 Ls = 96.000
 L.T. = 64.016
 S.T. = 32.014
 S.E. = 0.06
 D.S. = 100 kph

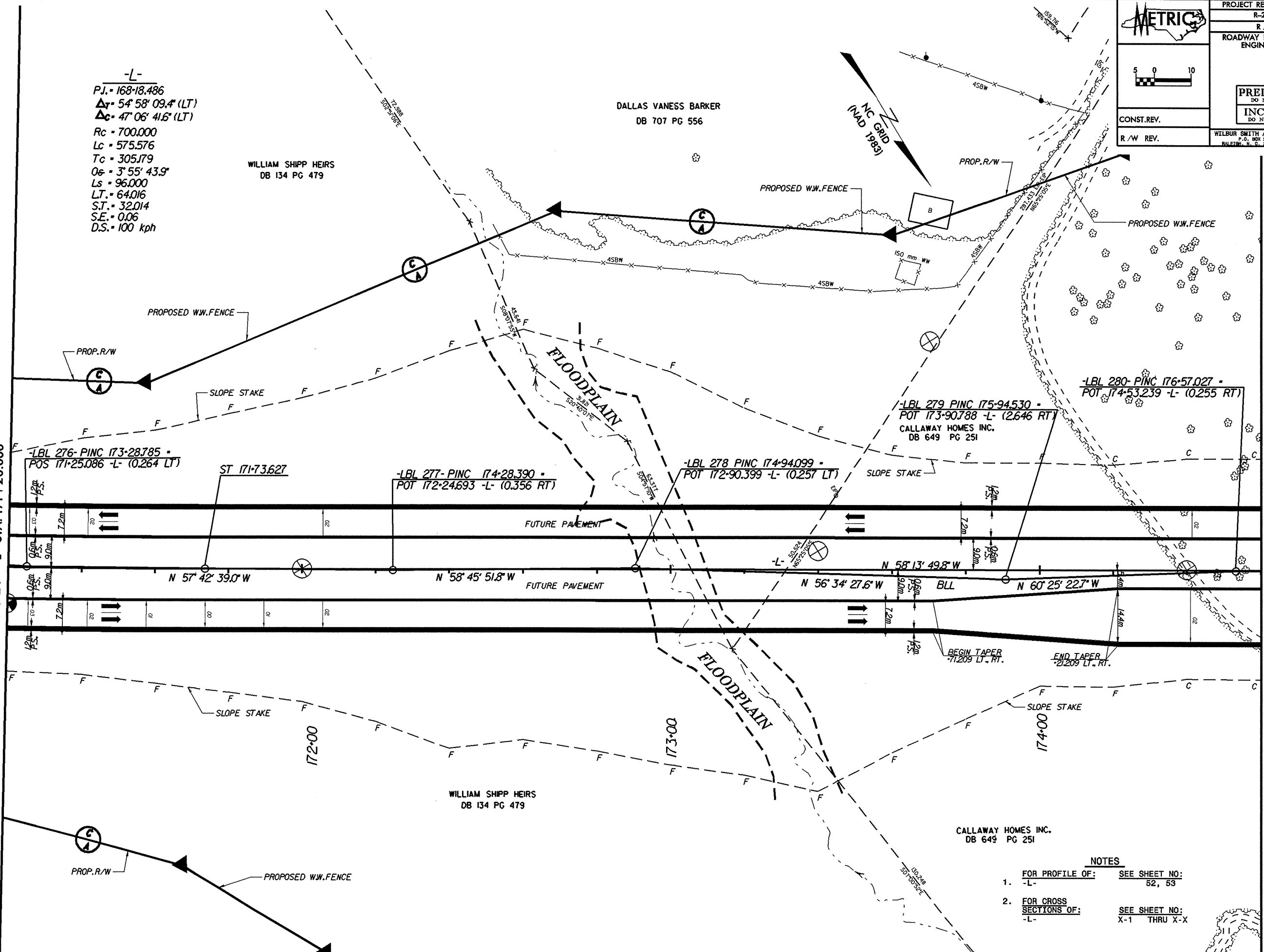
WILLIAM SHIPP HEIRS
DB 134 PG 479

DALLAS VANESS BARKER
DB 707 PG 556

NC GRID
(MAD 1983)

MATCH TO SHEET 24 -L- STA. 171+20.000

MATCH TO SHEET 26 -L- STA. 174+60.000



WILLIAM SHIPP HEIRS
DB 134 PG 479

CALLAWAY HOMES INC.
DB 649 PG 251

- NOTES**
- FOR PROFILE OF: -L- SEE SHEET NO: 52, 53
 - FOR CROSS SECTIONS OF: -L- SEE SHEET NO: X-1 THRU X-X