

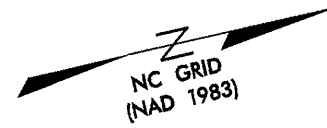
5 0 10

CONST. REV.

R/W REV.

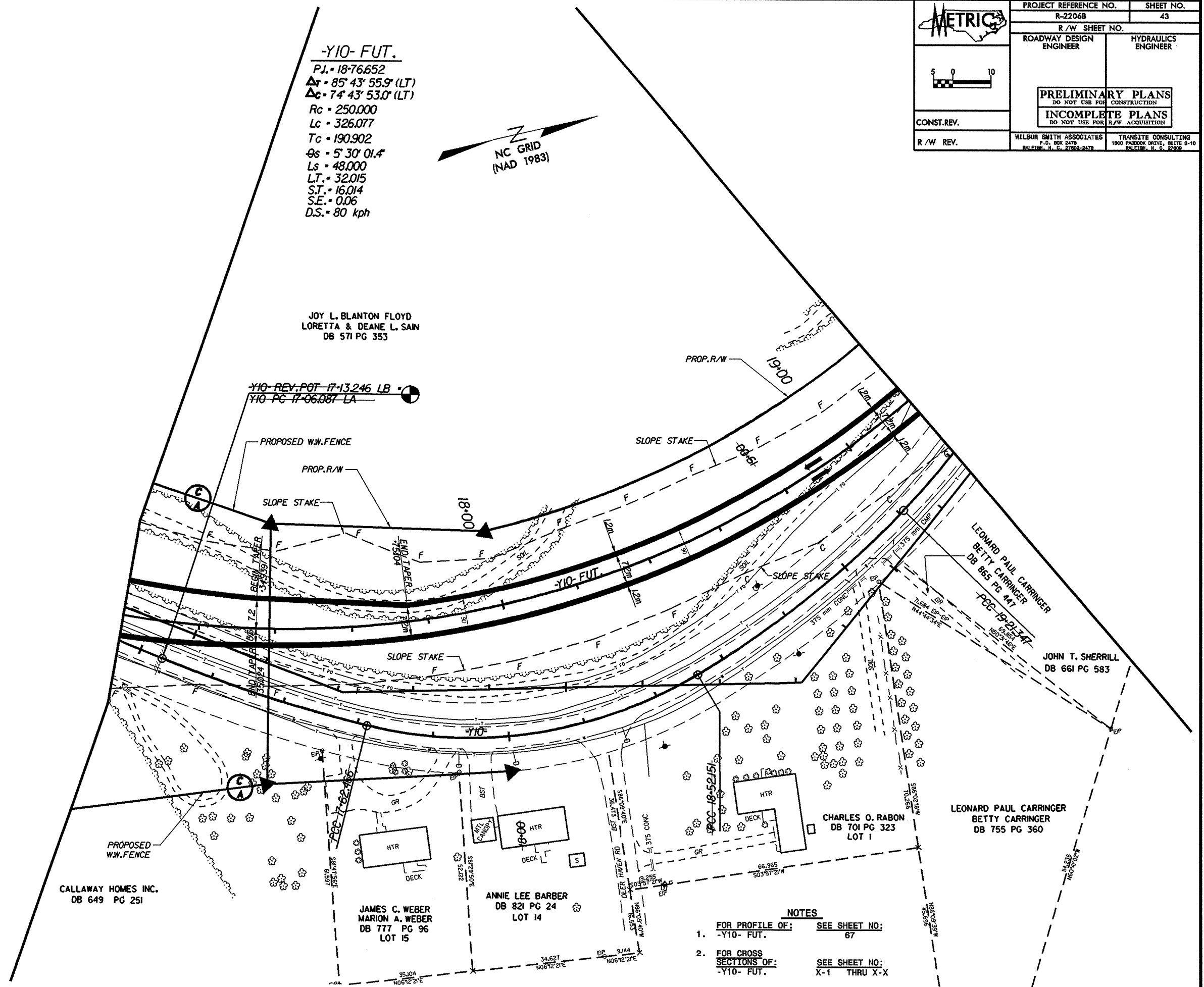
PROJECT REFERENCE NO. R-2206B	SHEET NO. 43
R/W SHEET NO.	
ROADWAY DESIGN ENGINEER	HYDRAULICS ENGINEER
PRELIMINARY PLANS DO NOT USE FOR CONSTRUCTION INCOMPLETE PLANS DO NOT USE FOR R/W ACQUISITION	
WILBUR SMITH ASSOCIATES P.O. BOX 2478 RALEIGH, N. C. 27602-2478	TRANSITE CONSULTING 1300 PARKSIDE DRIVE, SUITE B-10 RALEIGH, N. C. 27609

-Y10- FUT.
 P.I. = 18+76.652
 $\Delta I = 85^\circ 43' 55.9''$ (LT)
 $\Delta C = 74' 43.530''$ (LT)
 $R_c = 250.000$
 $L_c = 326.077$
 $T_c = 190.902$
 $\theta_s = 5^\circ 30' 01.4''$
 $L_s = 48.000$
 $LT = 32.015$
 $S.T. = 16.014$
 $S.E. = 0.06$
 $D.S. = 80$ kph



JOY L. BLANTON FLOYD
 LORETTA & DEANE L. SAIN
 DB 571 PG 353

-Y10- REV. POT 17+13.246 LB
 -Y10- PC 17+06.081 LA



- NOTES**
- FOR PROFILE OF: **-Y10- FUT.** SEE SHEET NO: 67
 - FOR CROSS SECTIONS OF: **-Y10- FUT.** SEE SHEET NO: X-1 THRU X-X