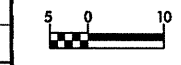
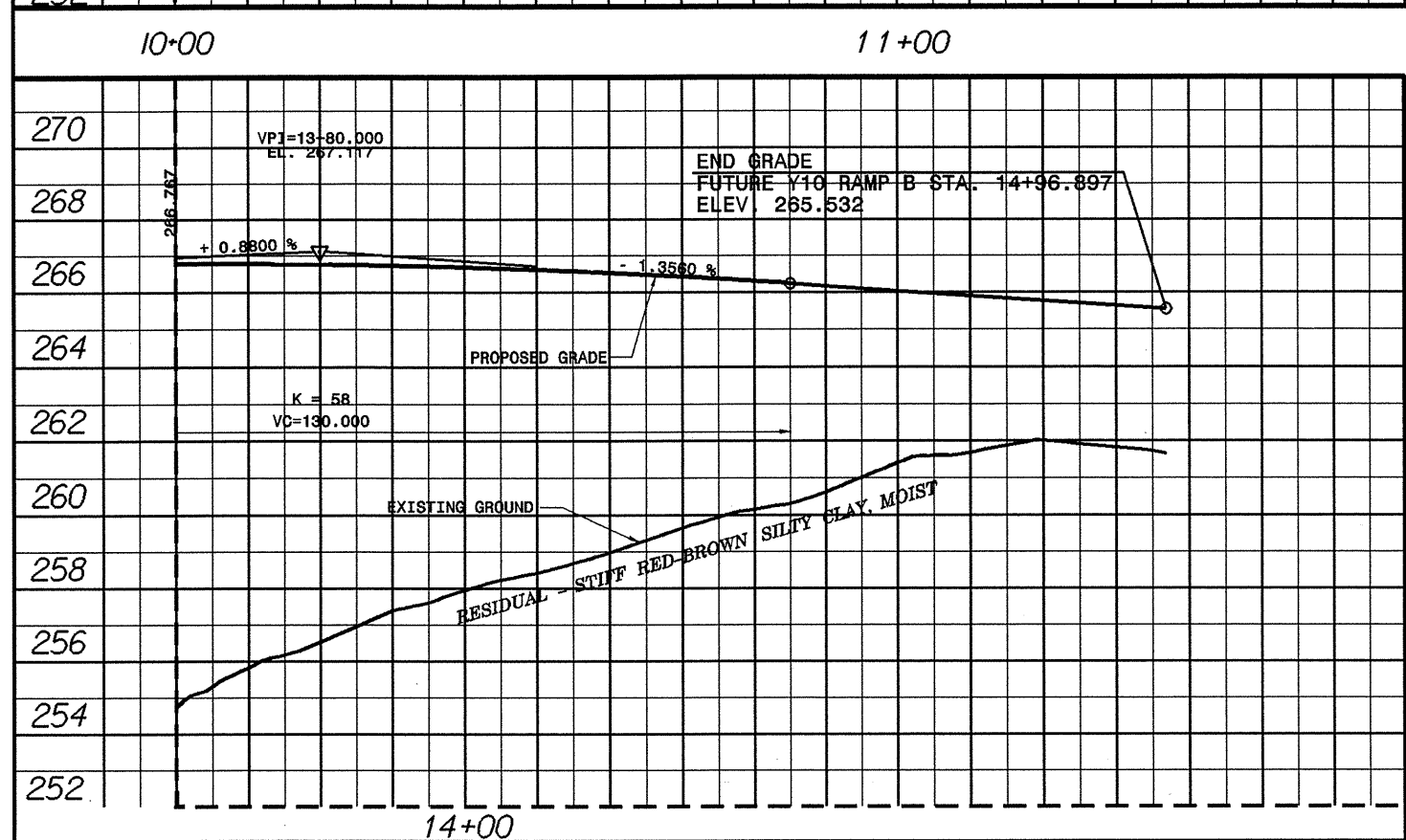
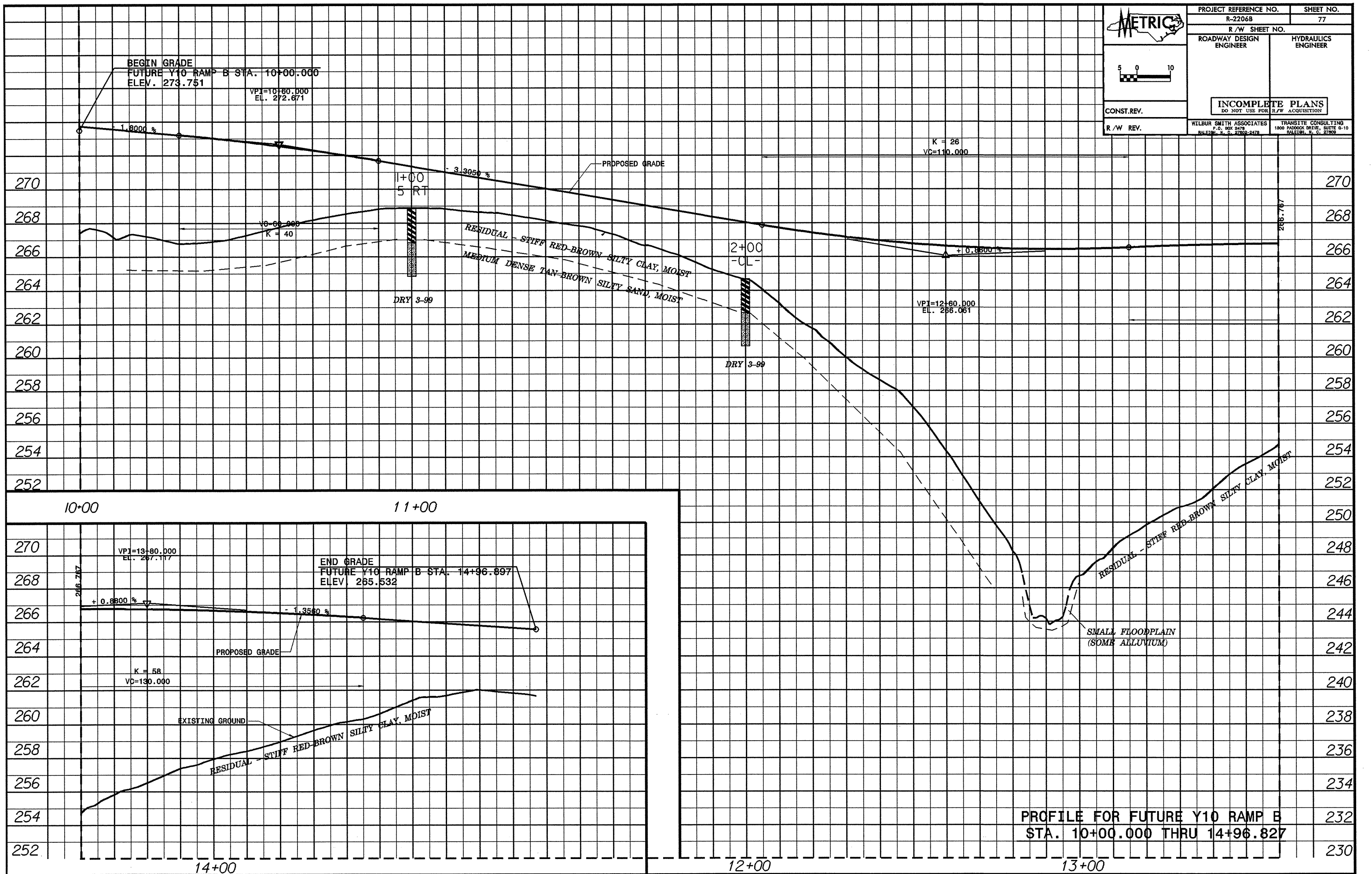




PROJECT REFERENCE NO. R-2206B	SHEET NO. 77
R/W SHEET NO.	
ROADWAY DESIGN ENGINEER	HYDRAULICS ENGINEER
<b>INCOMPLETE PLANS</b> DO NOT USE FOR R/W ACQUISITION	
WILBUR SMITH ASSOCIATES P.O. BOX 2478 RALEIGH, N. C. 27602-2478	TRANSITE CONSULTING 1800 PADDOCK DRIVE, SUITE 6-10 RALEIGH, N. C. 27609



CONST. REV.  
R/W REV.



PROFILE FOR FUTURE Y10 RAMP B  
STA. 10+00.000 THRU 14+96.827