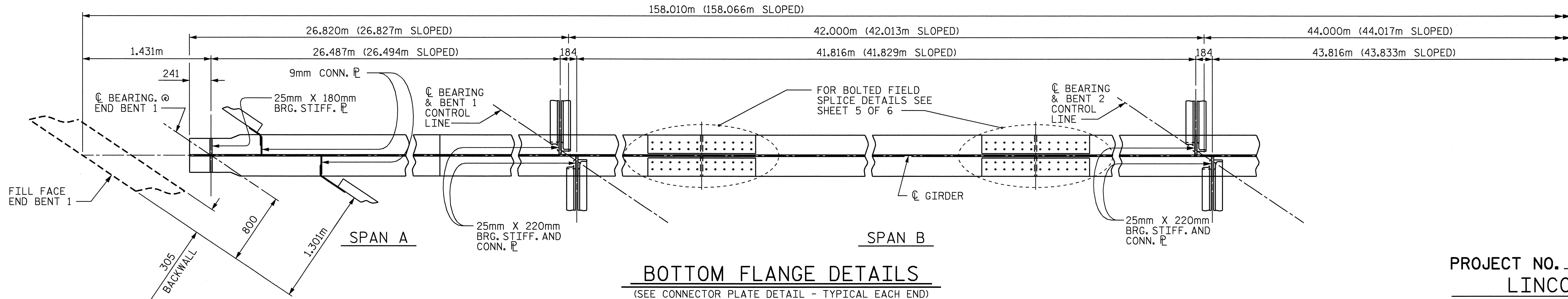


- == NOTES ==
- CHARPY V-NOTCH TESTS ARE REQUIRED FOR ALL TOP OR BOTTOM FLANGE PLATES WHICH FALL WITHIN THESE LIMITS, ALL WEB PLATES, AND ALL SPLICE PLATES. IF A PERMITTED SHOP FLANGE SPLICE IS NOT USED, CHARPY V-NOTCH TESTS WILL BE REQUIRED FOR THE ENTIRE FLANGE PLATE. FOR CHARPY V-NOTCH TESTS, SEE ARTICLE 1072-9 OF THE STANDARD SPECIFICATIONS.
  - NO WELDING OF FORMS OR FALSEWORK TO THE TOP PLATE WILL BE ALLOWED IN THIS AREA.

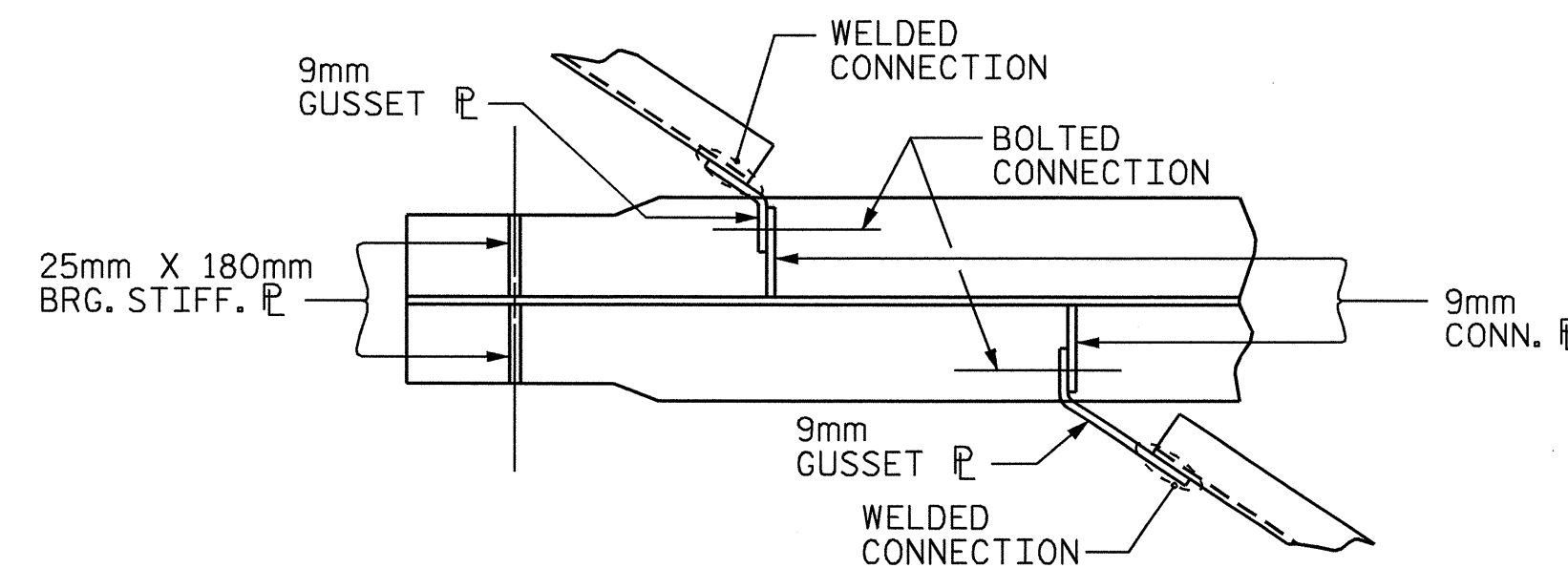
**GIRDER ELEVATION**

(1632 SHEAR STUDS PER GIRDER)  
(SEE "BOLTED FIELD SPLICE DETAILS" FOR ADDITIONAL STUDS)



**BOTTOM FLANGE DETAILS**

(SEE CONNECTOR PLATE DETAIL - TYPICAL EACH END)

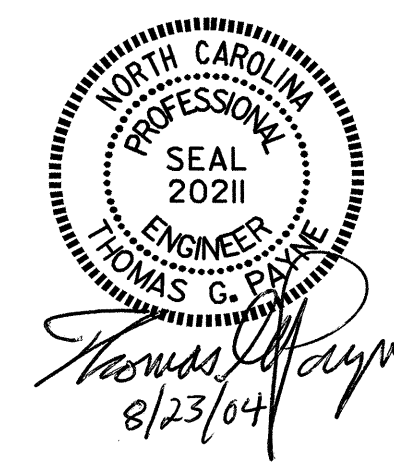


**CONNECTOR PLATE DETAIL**

(EACH END SIMILAR)

PROJECT NO. R-2206B  
LINCOLN COUNTY  
STATION: 123+38.105 -L-

SHEET 2 OF 6



STATE OF NORTH CAROLINA  
DEPARTMENT OF TRANSPORTATION  
RALEIGH

== SUPERSTRUCTURE ==  
STRUCTURAL STEEL  
DETAILS  
(LEFT LANE)

REVISIONS						SHEET NO.
NO.	BY:	DATE:	NO.	BY:	DATE:	S-13
1			3			TOTAL SHEETS
2			4			86

DRAWN BY : M. J. OSTRISHKO DATE : 4-2-01  
CHECKED BY : E. G. ALLEN DATE : 4-20-01

20-AUG-2004 16:00  
W:\squad1\2206b\Final Plans\str1\2206b01.ss.dgn  
klayne