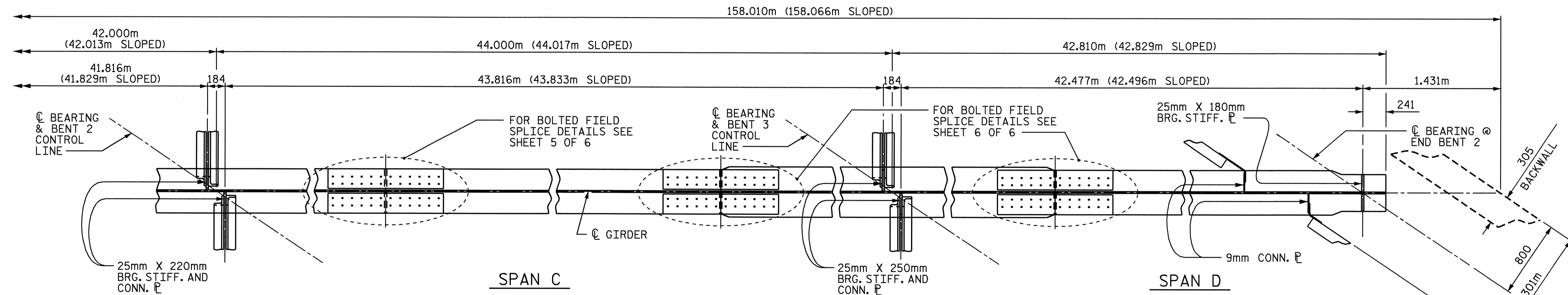


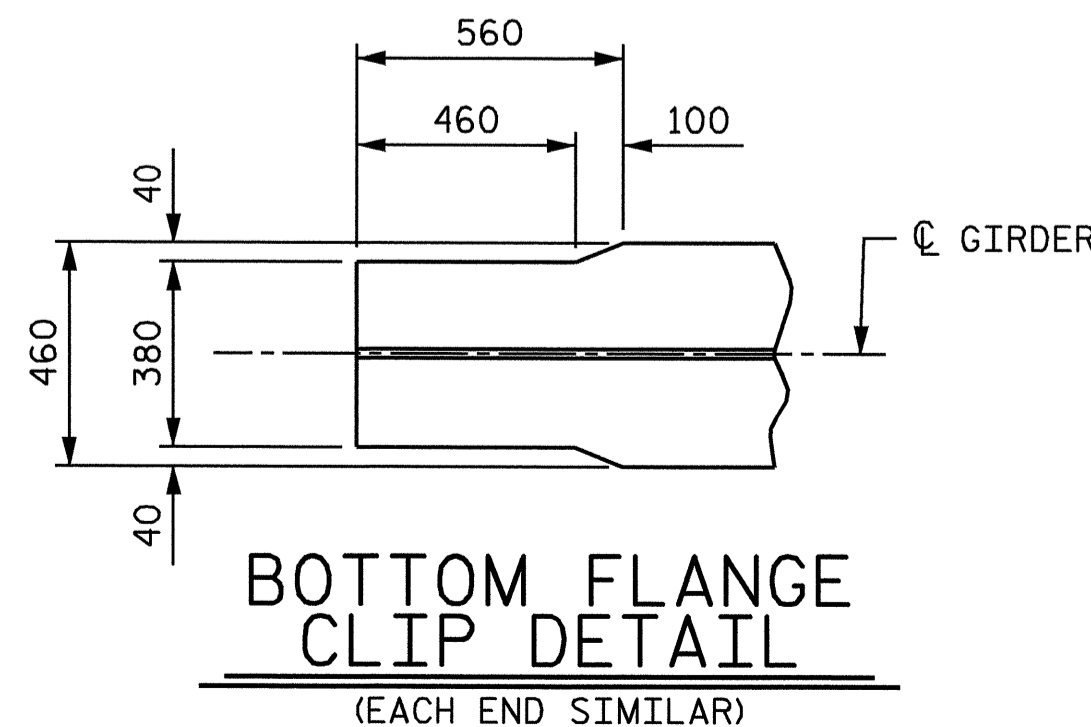
GIRDER ELEVATION

(1632 SHEAR STUDS PER GIRDER)
(SEE "BOLTED FIELD SPLICE DETAILS" FOR ADDITIONAL STUDS)



BOTTOM FLANGE DETAILS

(SEE BOTTOM FLANGE CLIP DETAIL - TYPICAL EACH END)



BOTTOM FLANGE CLIP DETAIL
(EACH END SIMILAR)

NOTES

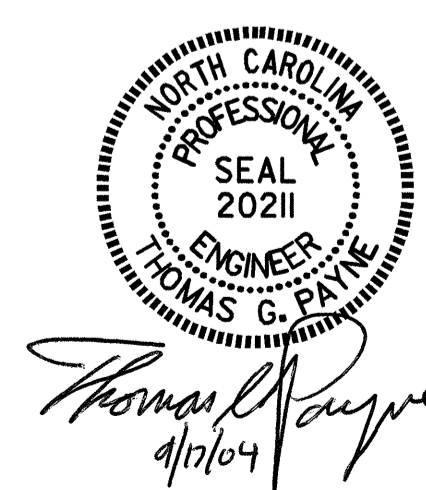
- ① CHARPY V-NOTCH TESTS ARE REQUIRED FOR ALL TOP OR BOTTOM FLANGE PLATES WHICH FALL WITHIN THESE LIMITS, ALL WEB PLATES, AND ALL SPLICE PLATES. IF A PERMITTED SHOP SPLICE IS NOT USED, CHARPY V-NOTCH TESTS WILL BE REQUIRED FOR THE ENTIRE FLANGE PLATE. FOR CHARPY V-NOTCH TESTS, SEE ARTICLE 1072-9 OF THE STANDARD SPECIFICATIONS.
- ② NO WELDING OF FORMS OR FALSEWORK TO THE TOP PLATE WILL BE ALLOWED IN THIS AREA.

PROJECT NO. R-2206B
LINCOLN COUNTY
 STATION: 123+38.105 -L-

SHEET 3 OF 6

STATE OF NORTH CAROLINA
 DEPARTMENT OF TRANSPORTATION
 RALEIGH

SUPERSTRUCTURE
STRUCTURAL STEEL
DETAILS
 (LEFT LANE)



DRAWN BY: M. J. OSTRISHKO DATE: 4-2-01
 CHECKED BY: E. G. ALLEN DATE: 4-20-01

16-SEP-2004 14:52
 W:\squad+r2206b\Final Plans\str1\r2206b01ss.dgn
 tpayne

REVISIONS						SHEET NO.
NO.	BY:	DATE:	NO.	BY:	DATE:	S-14
1			3			TOTAL SHEETS
2			4			86

STR. #1