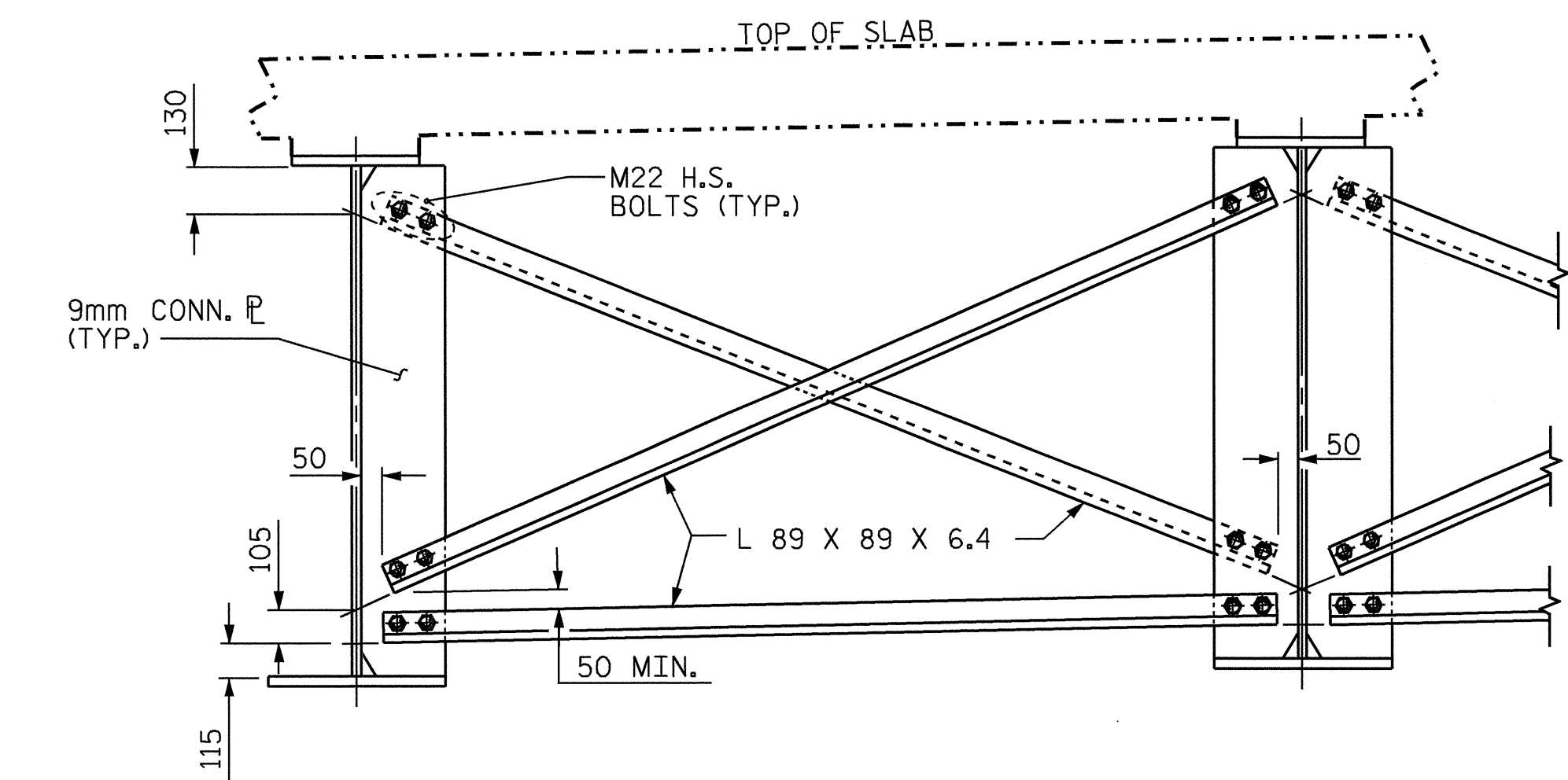
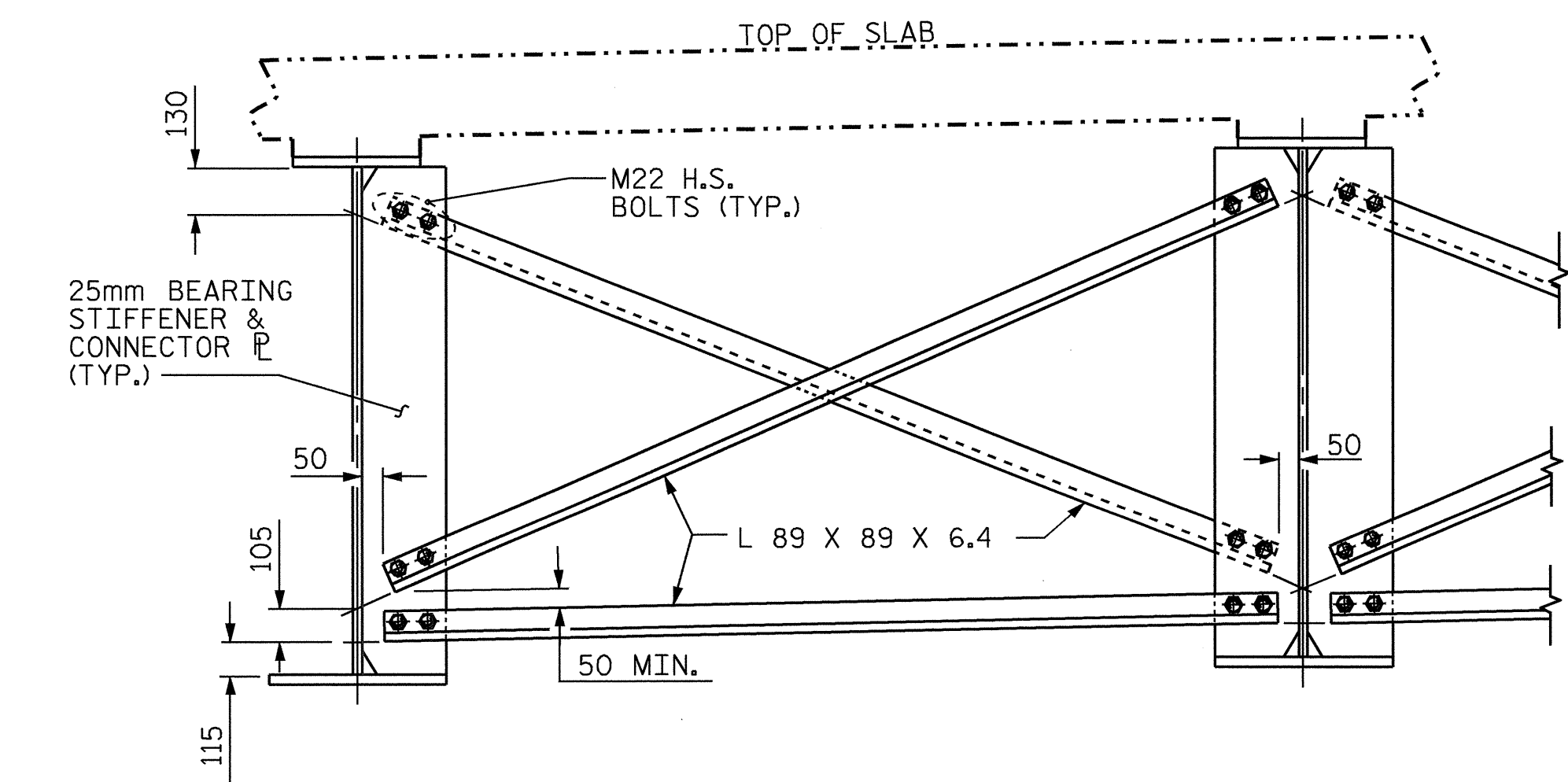


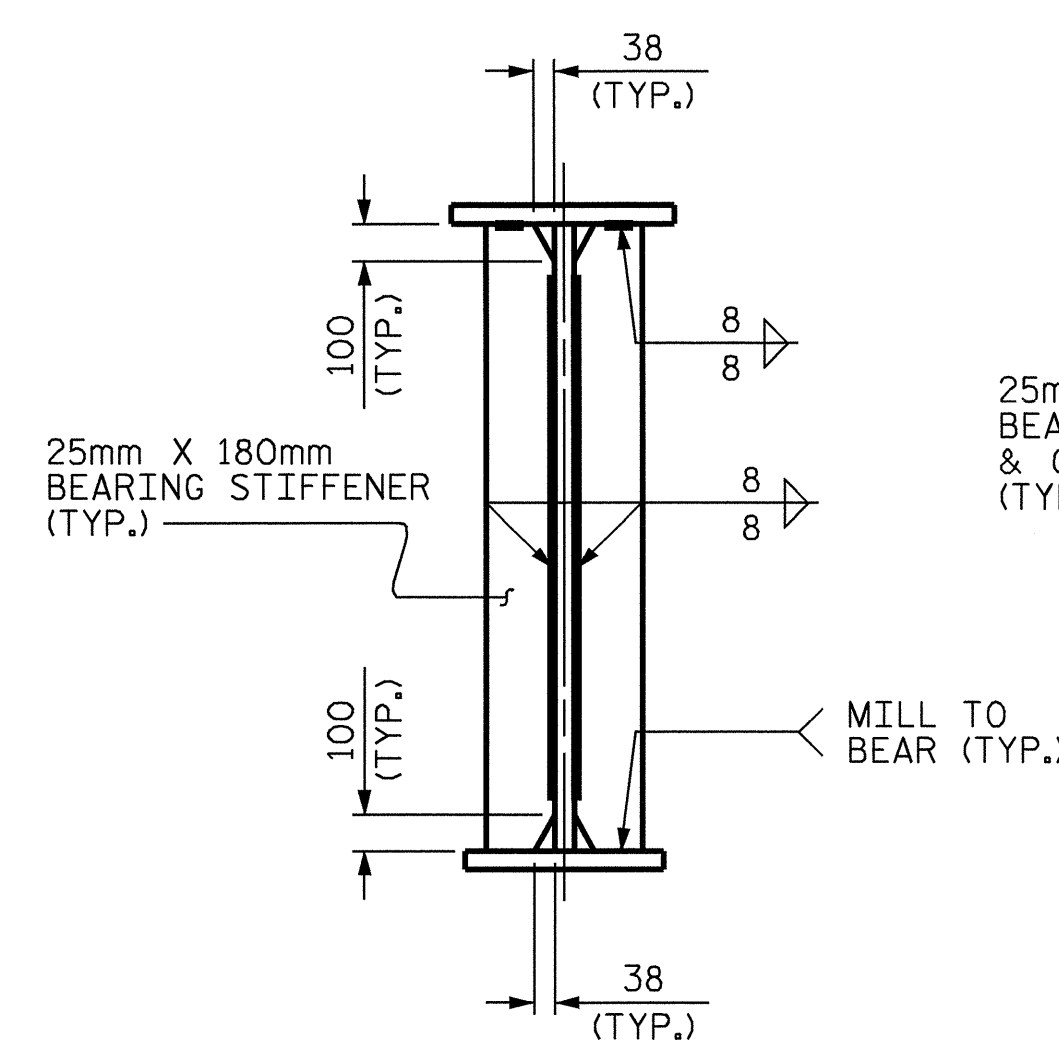
TYPICAL END BENT CROSSFRAME (CF1)



TYPICAL INTERMEDIATE CROSSFRAME (CF2)

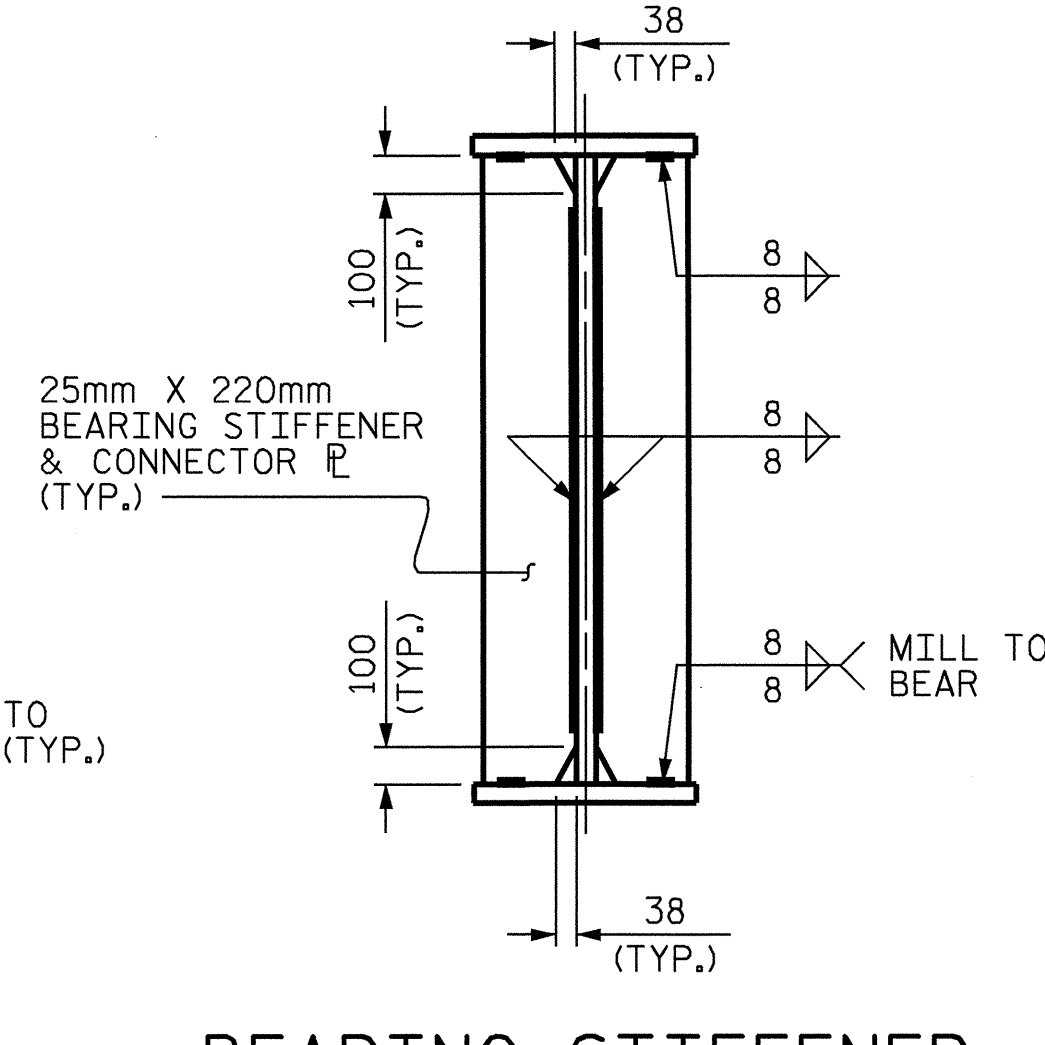


TYPICAL BENT CROSSFRAME (CF3)



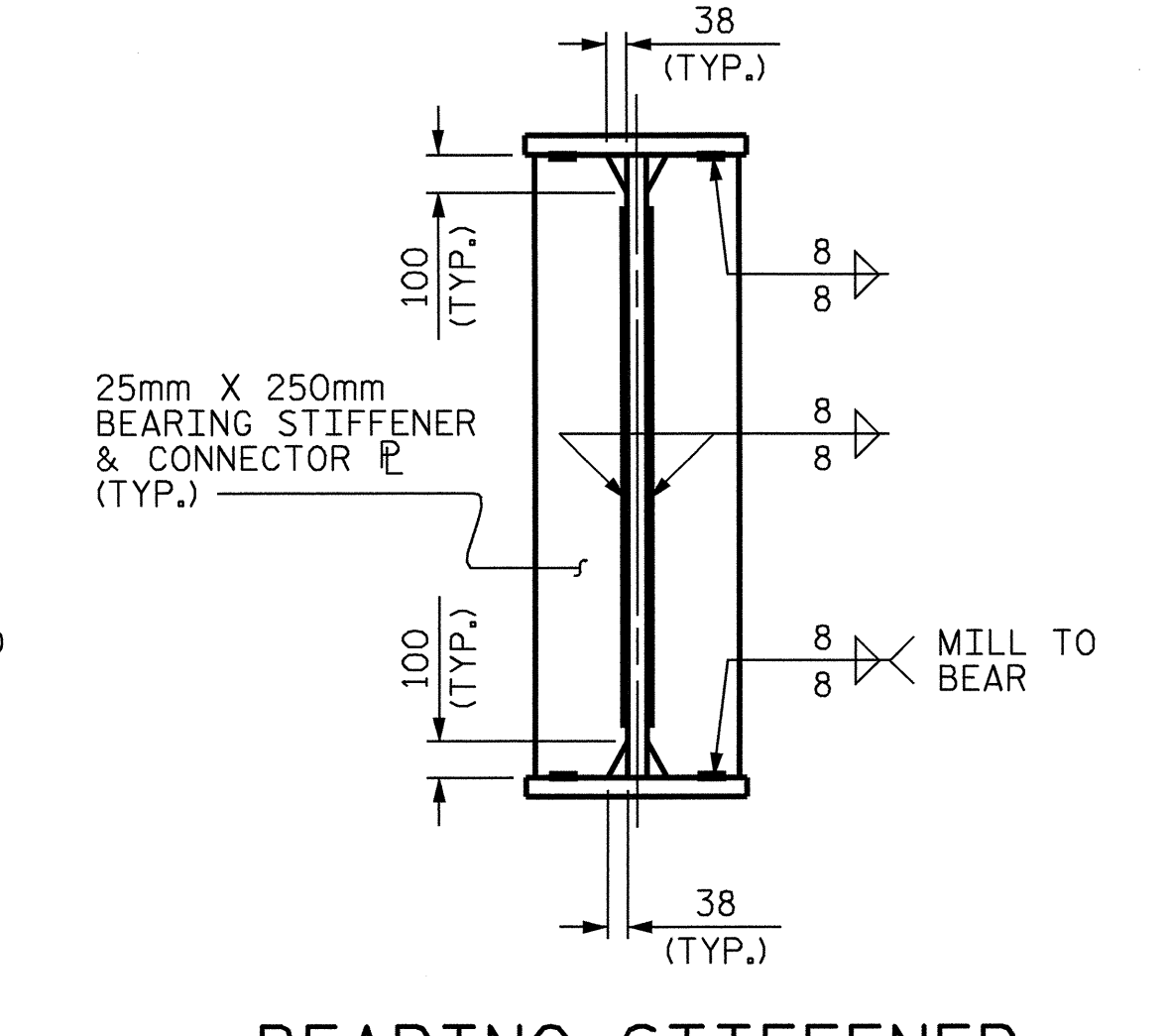
BEARING STIFFENER

@ END BENTS 1 & 2



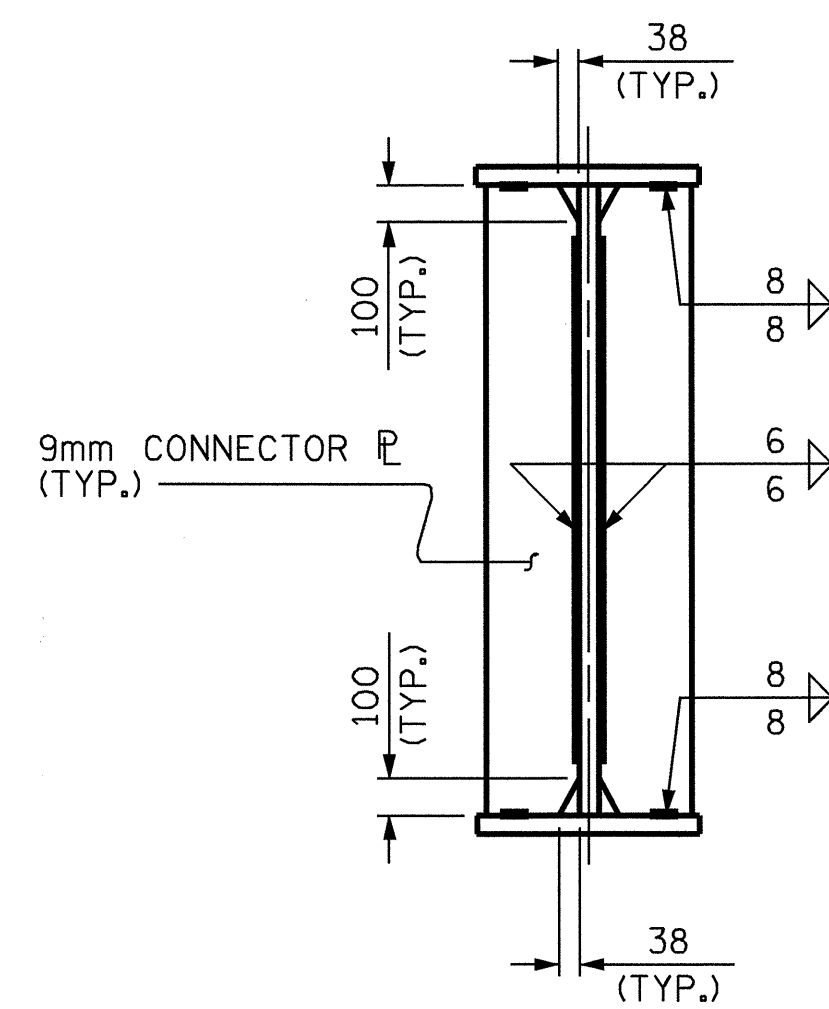
BEARING STIFFENER & CONNECTOR PLATE

@ BENTS 1 & 2



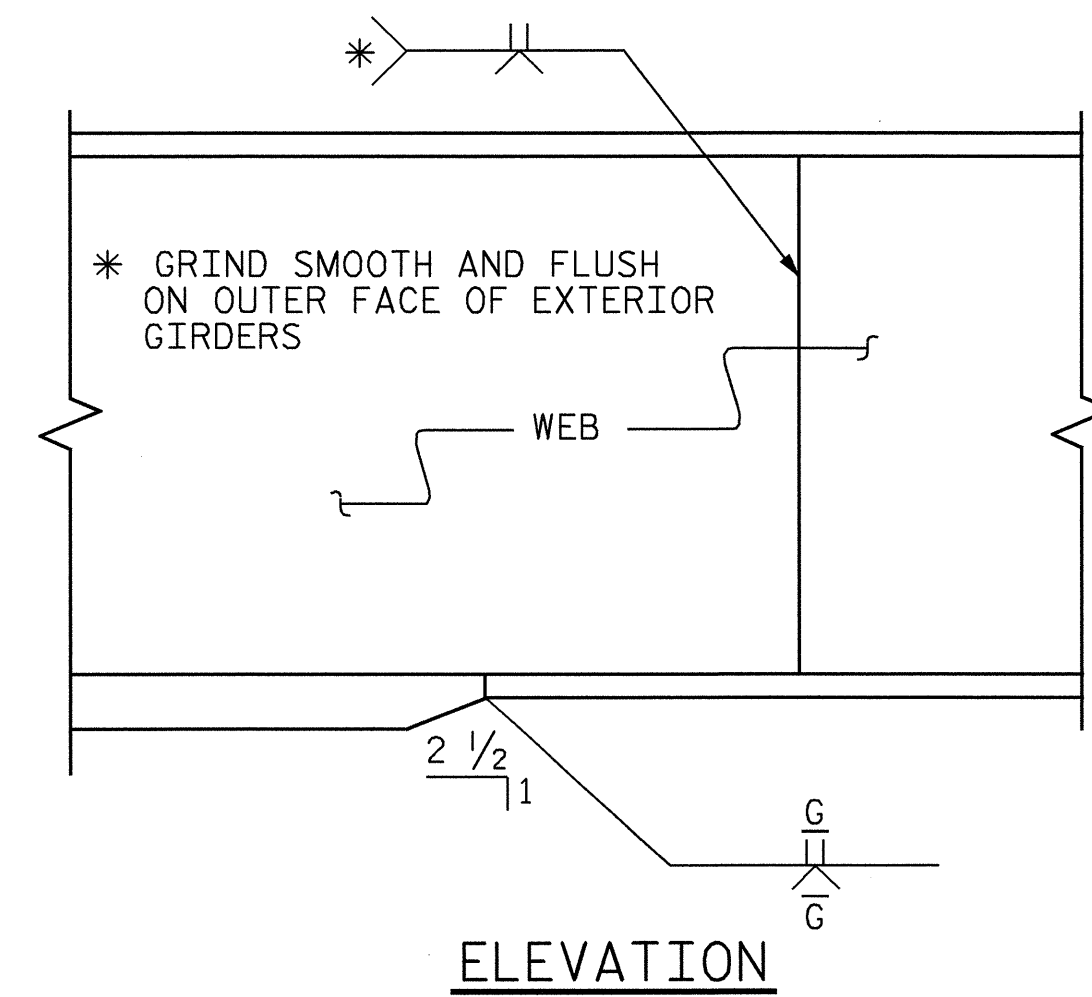
BEARING STIFFENER & CONNECTOR PLATE

@ BENT 3

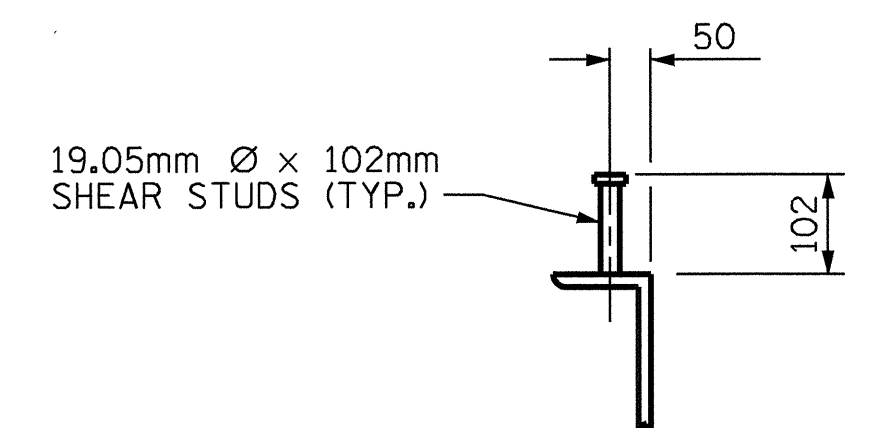
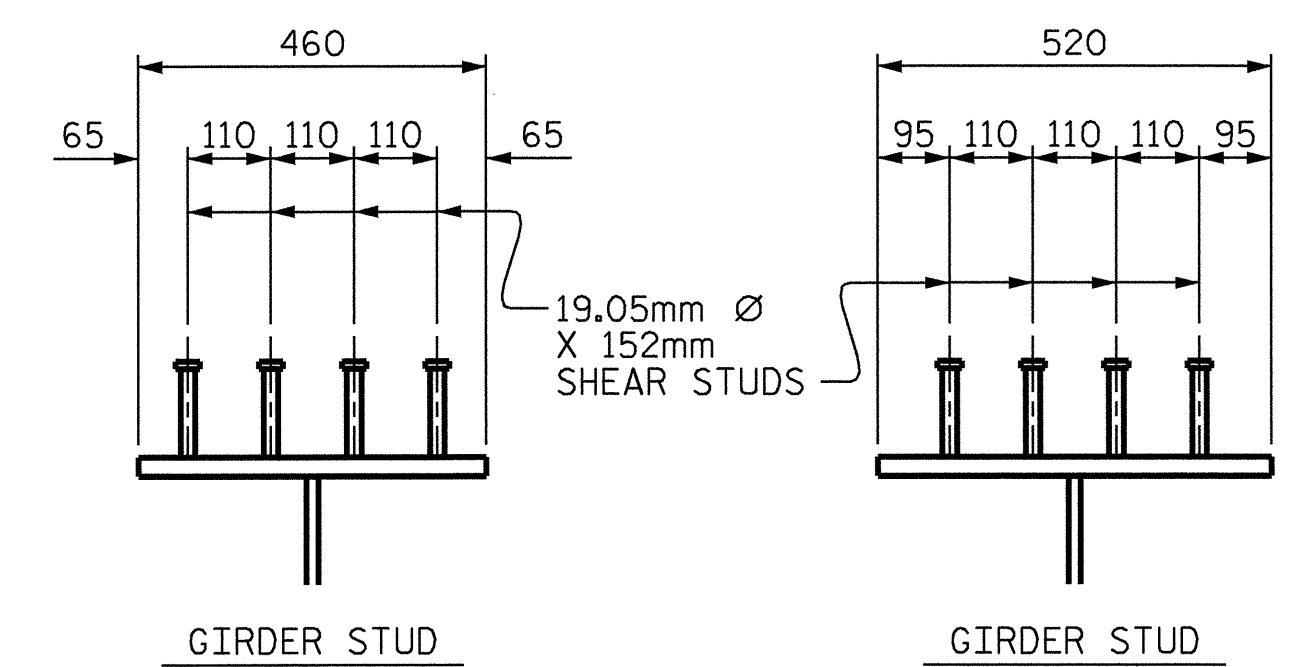


INTERMEDIATE CONNECTOR & END BENT CONNECTOR PLATES

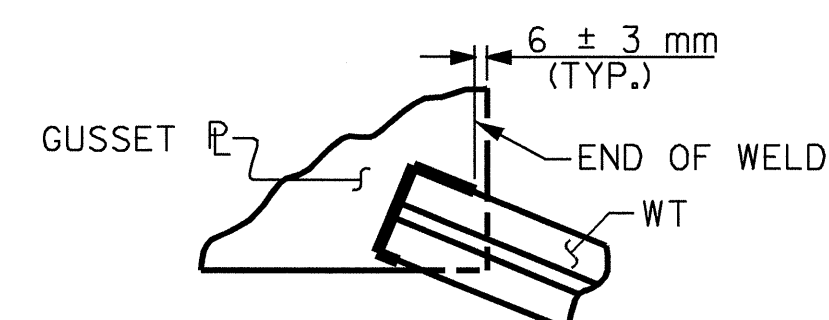
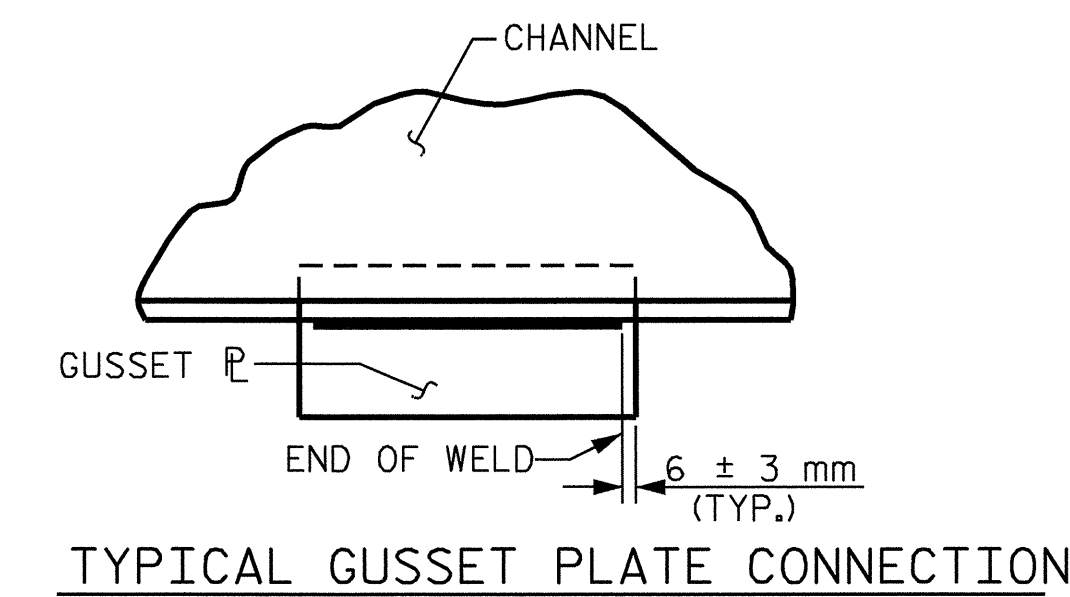
OMIT CONNECTOR PLATES ON OUTSIDE OF EXTERIOR GIRDERS



TYPICAL FLANGE AND WEB BUTT JOINT

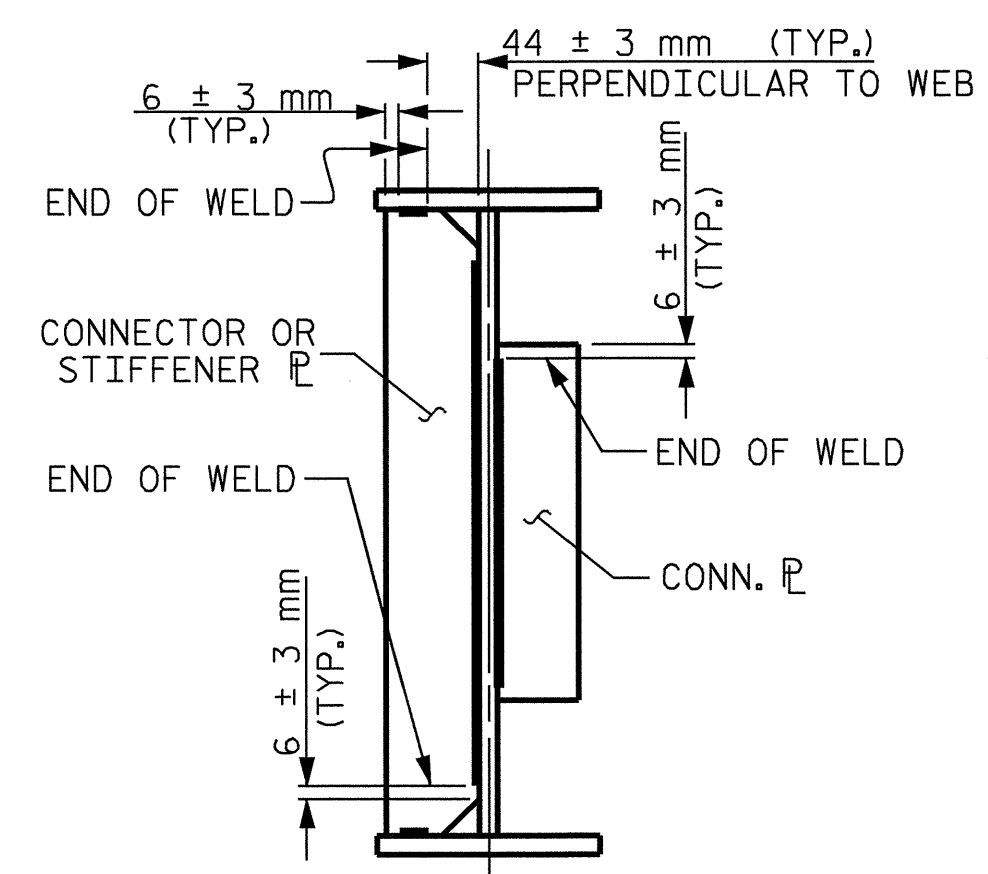


SHEAR STUD DETAILS



TYPICAL "TEE" TO GUSSET PLATE CONNECTION

WELD TERMINATION DETAILS

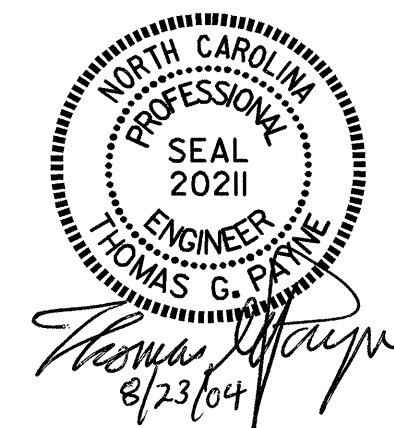


TYPICAL STIFFENER OR CONNECTOR PLATE CONNECTIONS

PROJECT NO. R-2206B
 LINCOLN COUNTY
 STATION: 123+38.105 -L-

SHEET 4 OF 6

STATE OF NORTH CAROLINA
 DEPARTMENT OF TRANSPORTATION
 RALEIGH
 SUPERSTRUCTURE
 STRUCTURAL STEEL
 DETAILS
 (LEFT LANE)



DRAWN BY: M. J. OSTRISHKO DATE: 4-2-01
 CHECKED BY: E. G. ALLEN DATE: 4-20-01

20-AUG-2004 16:00
 W:\squad1\2206b\Final Plans\str1\2206b01ss.dgn
 klayne

REVISIONS						SHEET NO.
NO.	BY:	DATE:	NO.	BY:	DATE:	TOTAL SHEETS
1			3			86
2			4			

STR. #1