

**NOTES**

THE BARRIER RAIL IN A CONTINUOUS UNIT SHALL NOT BE CAST UNTIL ALL SLAB CONCRETE IN THE UNIT HAS BEEN CAST AND HAS REACHED A MINIMUM COMPRESSIVE STRENGTH OF 20.7 MPa.

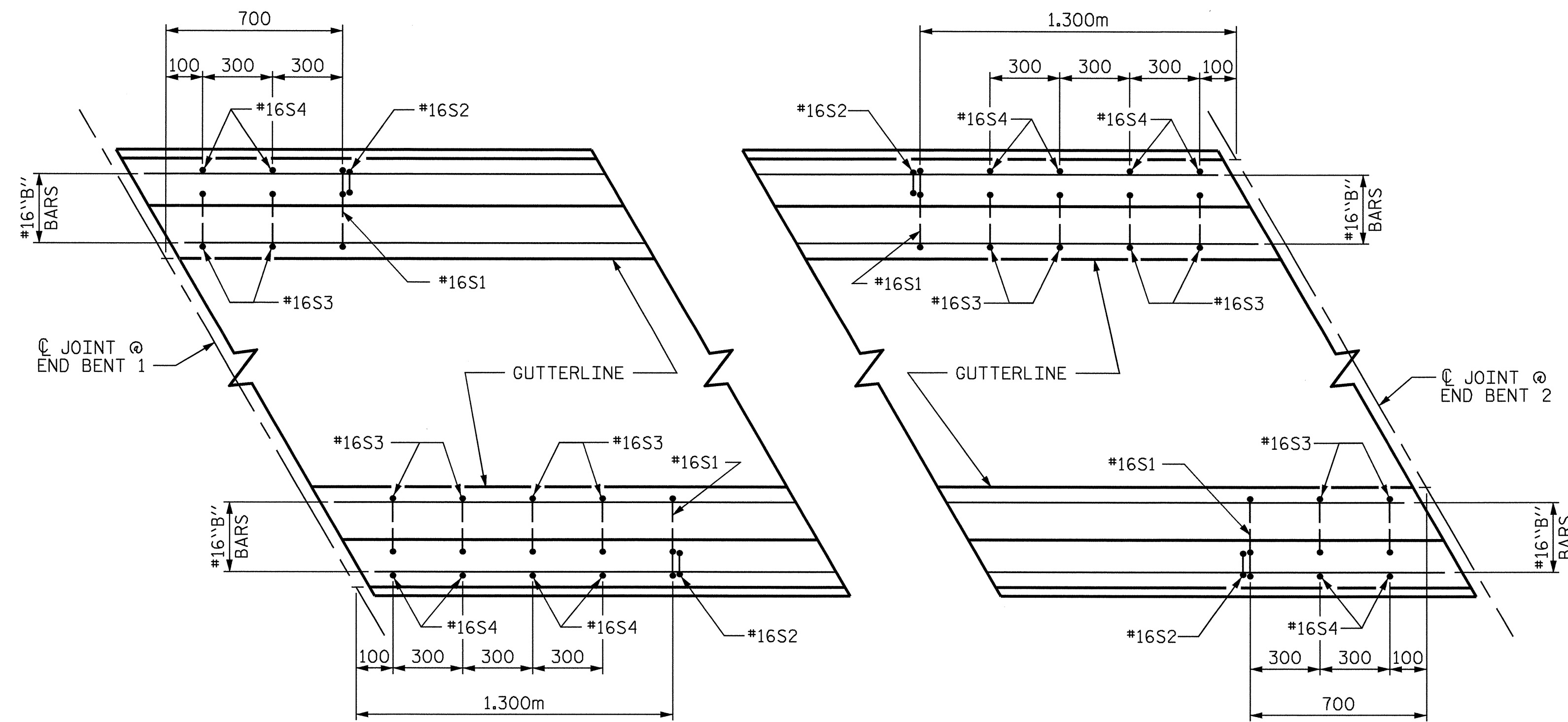
WHEN EVAZOTE JOINT SEAL IS REQUIRED, THE JOINT IN THE DECK SHALL BE SAWED PRIOR TO THE CASTING OF BARRIER RAIL.

ALL REINFORCING STEEL IN BARRIER RAILS SHALL BE EPOXY COATED.

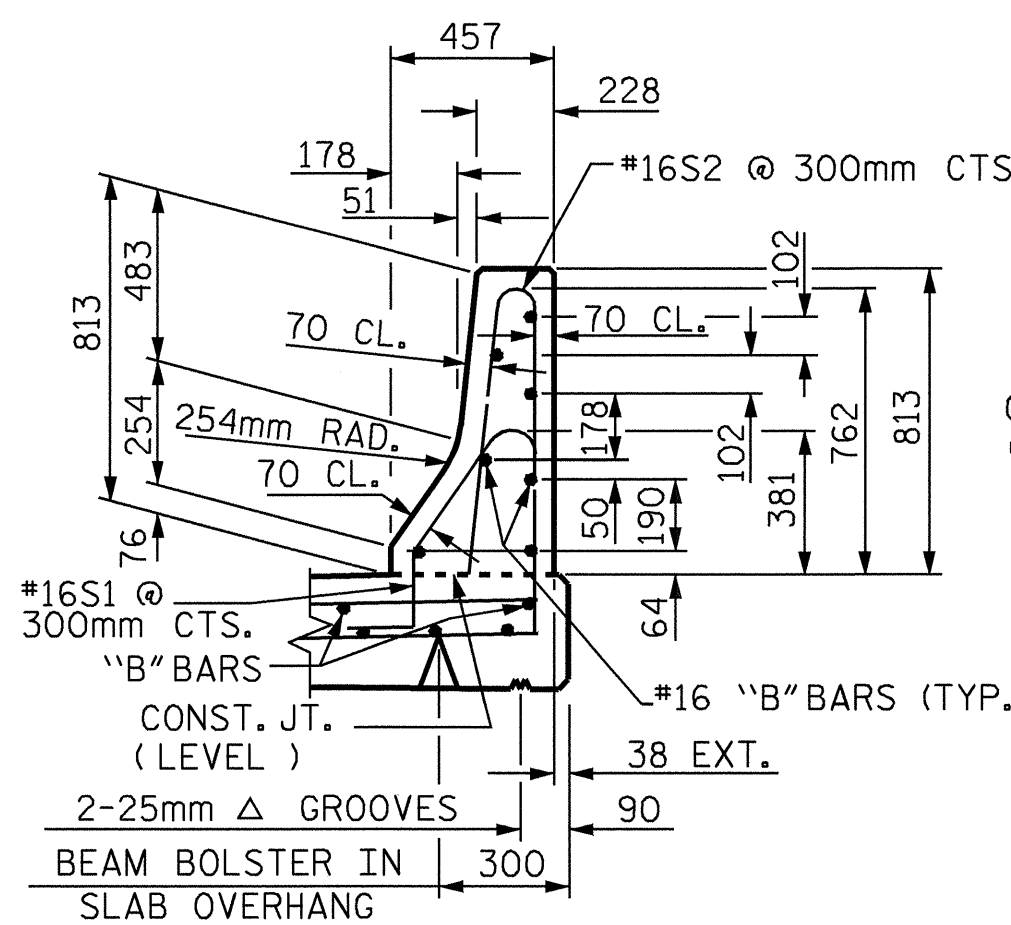
THE #16S3 THRU #16S6 BARS SHALL BE INSTALLED, USING AN ADHESIVE ANCHORING SYSTEM, AFTER SAWING THE JOINT. FOR ADHESIVELY ANCHORED ANCHOR BOLTS OR DOWELS, SEE SPECIAL PROVISIONS. THE YIELD LOAD FOR THE #16S3 THRU #16S6 BARS IS 82.7 KN. FIELD TESTING FOR THE ADHESIVE BONDING SYSTEM IS NOT REQUIRED.

VERTICAL GROOVED CONTRACTION JOINTS, 12mm IN DEPTH, SHALL BE TOOLED IN ALL EXPOSED FACES OF THE BARRIER RAIL AND IN ACCORDANCE WITH ARTICLE 825-10(B) OF THE STANDARD SPECIFICATIONS. A JOINT SHALL BE LOCATED AT EACH THIRD POINT BETWEEN BARRIER RAIL EXPANSION JOINTS. ONLY ONE JOINT IS REQUIRED AT MIDPOINT OF BARRIER RAIL SEGMENTS LESS THAN 6.1m IN LENGTH AND NO JOINTS ARE REQUIRED FOR THOSE SEGMENTS LESS THAN 3.5m IN LENGTH.

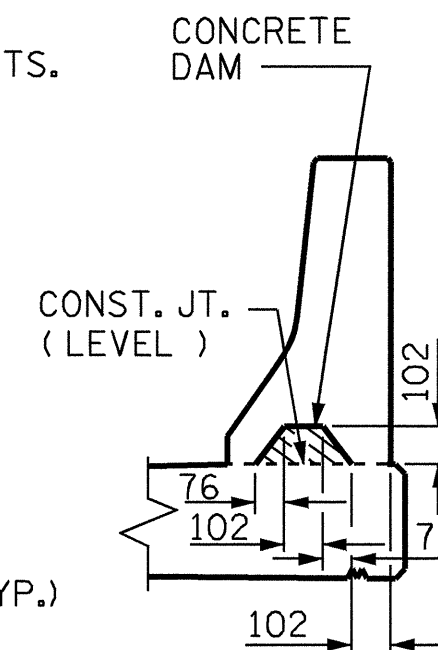
THE #16 S1 & S2 BARS MAY BE SHIFTED SLIGHTLY IN THE AREA OF THE GUARDRAIL ANCHOR ASSEMBLY TO CLEAR ASSEMBLY BOLTS.



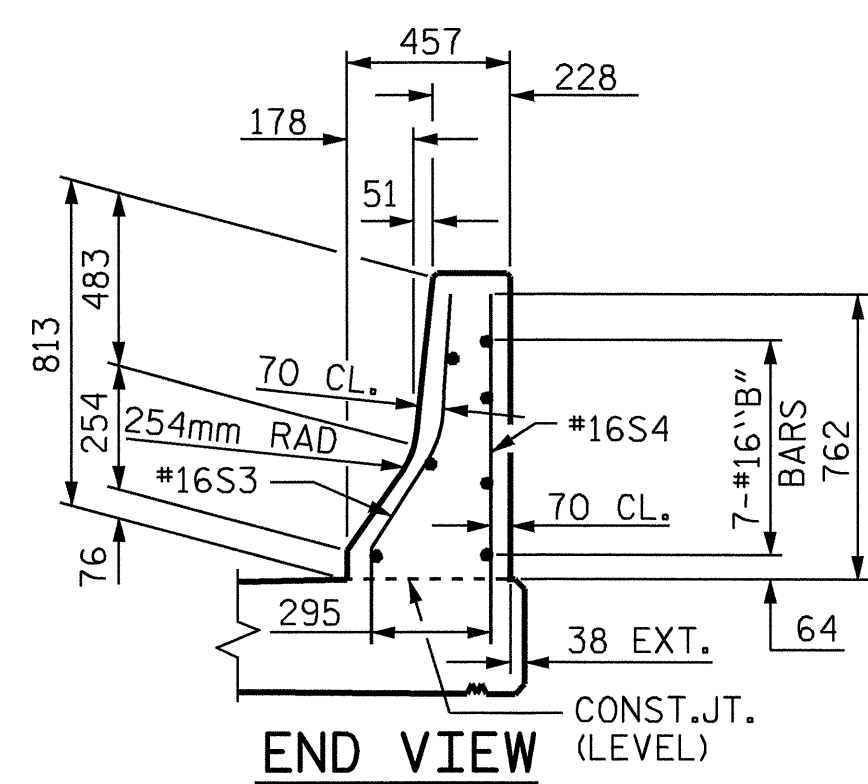
**PLAN**



**SECTION THRU RAIL**



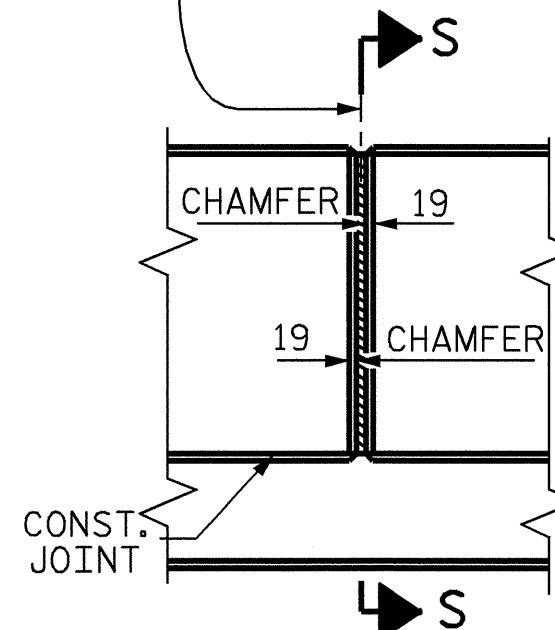
**SECTION S-S**  
AT DAM IN OPEN JOINT  
(THIS IS TO BE USED ONLY WHEN SLIP FORM IS USED)



**END VIEW**

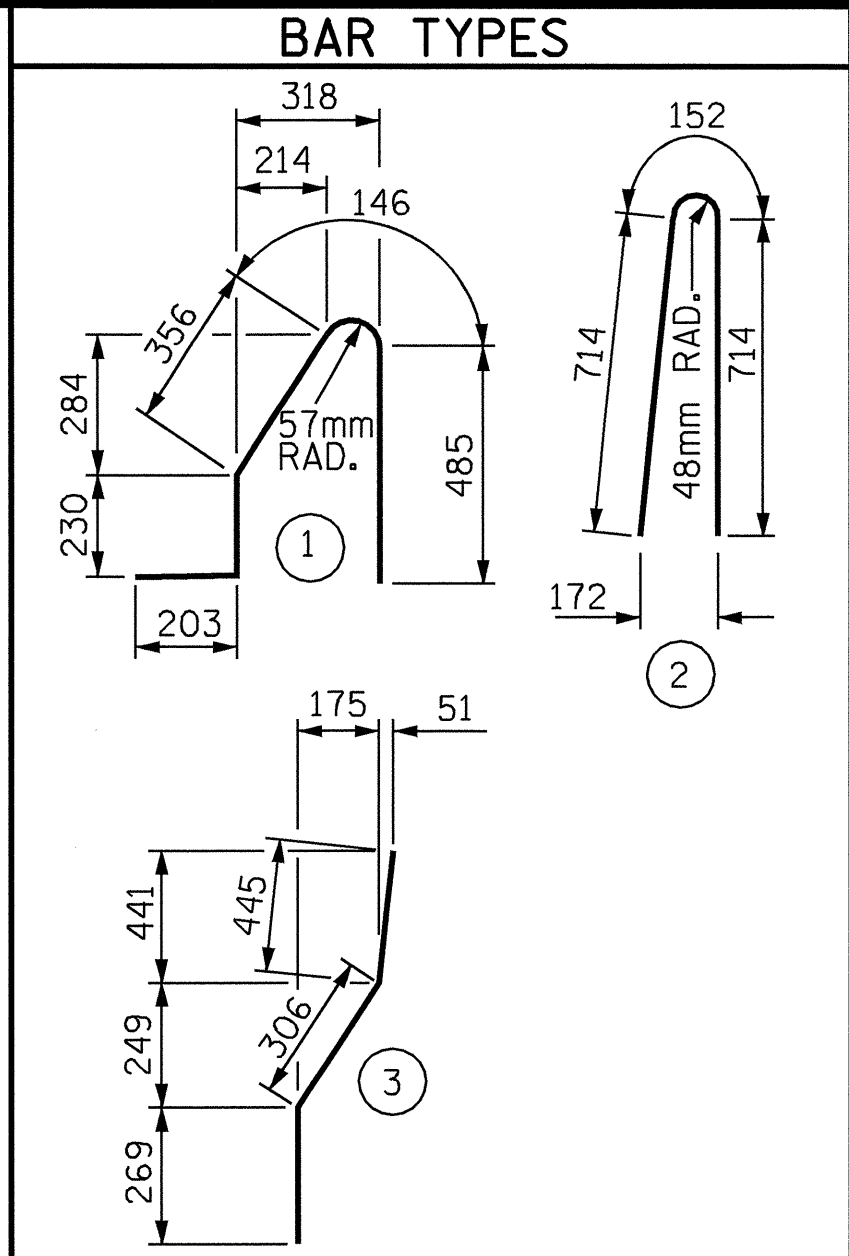
**BARRIER RAIL - END OF RAIL DETAILS**

13mm EXP. JT. MAT'L HELD IN PLACE WITH GALVANIZED NAILS (NOTE : OMIT EXP. JOINT MAT'L WHEN SLIP FORM IS USED AND REPLACE WITH CONCRETE DAM)



**ELEVATION AT EXPANSION JOINTS**

**BARRIER RAIL DETAILS**



ALL BAR DIMENSIONS ARE OUT TO OUT

BILL OF MATERIAL					
FOR CONCRETE BARRIER RAIL ONLY					
BAR	NO.	SIZE	TYPE	LENGTH	WEIGHT
* S1	1028	#16	1	1420	2266
* S2	1028	#16	2	1580	2521
* S3	12	#16	3	1020	19
* S4	12	#16	STR	960	18
* B11	56	#16	STR	4420	384
* B12	42	#16	STR	6480	422
* B13	14	#16	STR	5880	128
* B14	168	#16	STR	8880	2315
* B15	14	#16	STR	7680	167
* EPOXY COATED REINFORCING STEEL					8240 kg
CLASS AA CONCRETE				78.7 CU. METER	
CONCRETE BARRIER RAIL					313.724 METERS

PROJECT NO. R-2206B  
LINCOLN COUNTY  
STATION: 123+38.105 -L-

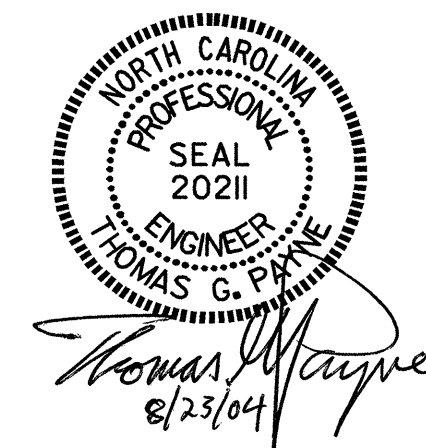
SHEET 2 OF 2

STATE OF NORTH CAROLINA  
DEPARTMENT OF TRANSPORTATION  
RALEIGH

== SUPERSTRUCTURE ==  
**CONCRETE BARRIER RAIL**  
(LEFT LANE)

REVISIONS					SHEET NO.
NO.	BY:	DATE:	NO.	BY:	DATE:
1			3		
2			4		

TOTAL SHEETS: **86**



ASSEMBLED BY : M. J. OSTRISHKO	DATE : 4-2-01
CHECKED BY : E. G. ALLEN	DATE : 4-20-01
DRAWN BY : ARB 5/87	REV. 7/17/98 RWW/LES
CHECKED BY : SJD 9/87	REV. 8/16/99 RWW/LES
	REV. 10/17/00 RWW/LES