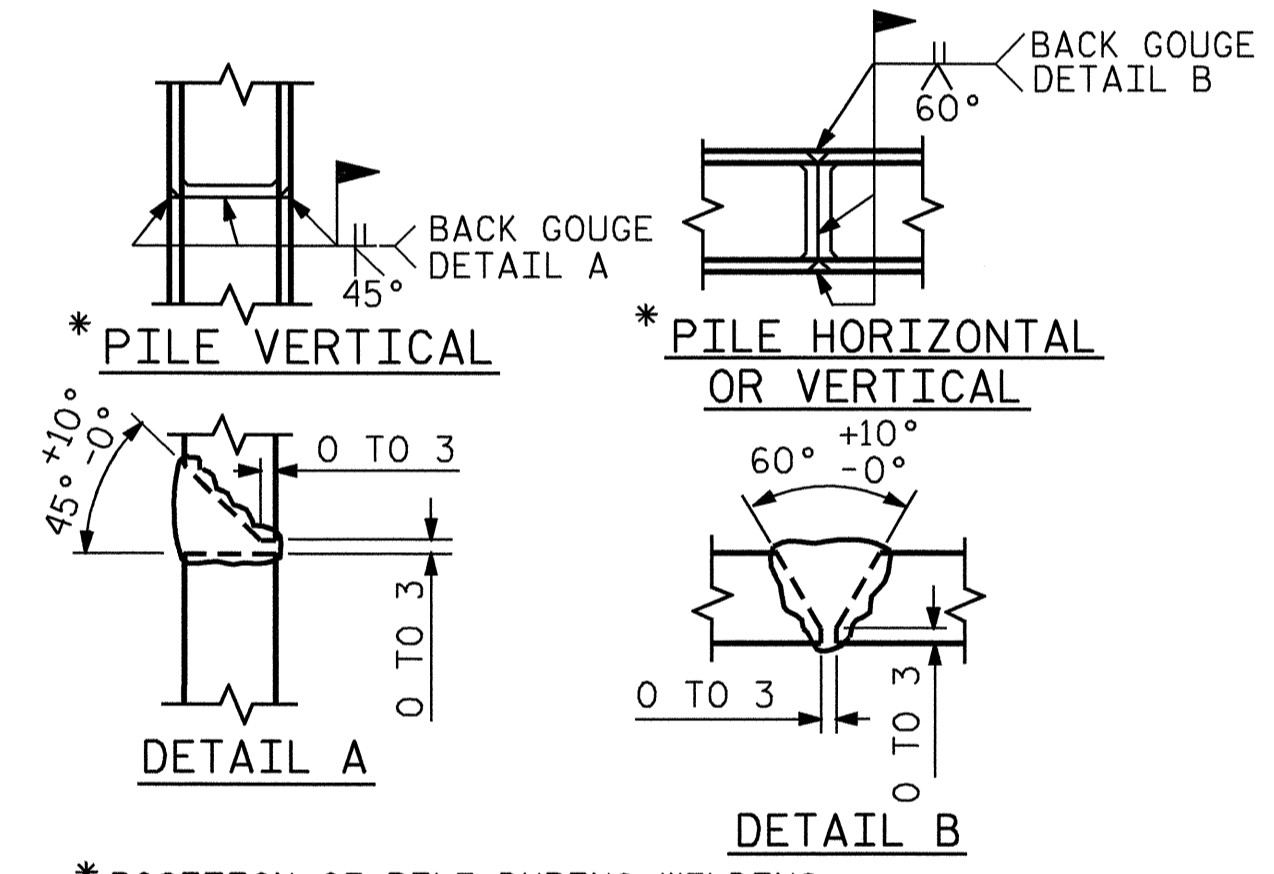


BAGGED STONE AND PIPE SHALL BE PLACED IMMEDIATELY AFTER COMPLETION OF END BENT EXCAVATION. PIPE MAY BE EITHER CONCRETE, CORRUGATED STEEL, CORRUGATED ALUMINUM ALLOY, OR CORRUGATED PLASTIC. PERFORATED PIPE WILL NOT BE ALLOWED.

BAGGED STONE SHALL REMAIN IN PLACE UNTIL THE ENGINEER DIRECTS THAT IT BE REMOVED. THE CONTRACTOR SHALL REMOVE AND DISPOSE OF SILT ACCUMULATIONS AT BAGGED STONE WHEN SO DIRECTED BY THE ENGINEER. BAGS SHALL BE REMOVED AND REPLACED WHENEVER THE ENGINEER DETERMINES THAT THEY HAVE DETERIORATED AND LOST THEIR EFFECTIVENESS.

NO SEPARATE PAYMENT WILL BE MADE FOR THIS WORK AND THE ENTIRE COST OF THIS WORK SHALL BE INCLUDED IN THE UNIT CONTRACT PRICE BID FOR THE SEVERAL PAY ITEMS.

TEMPORARY DRAINAGE AT END BENT

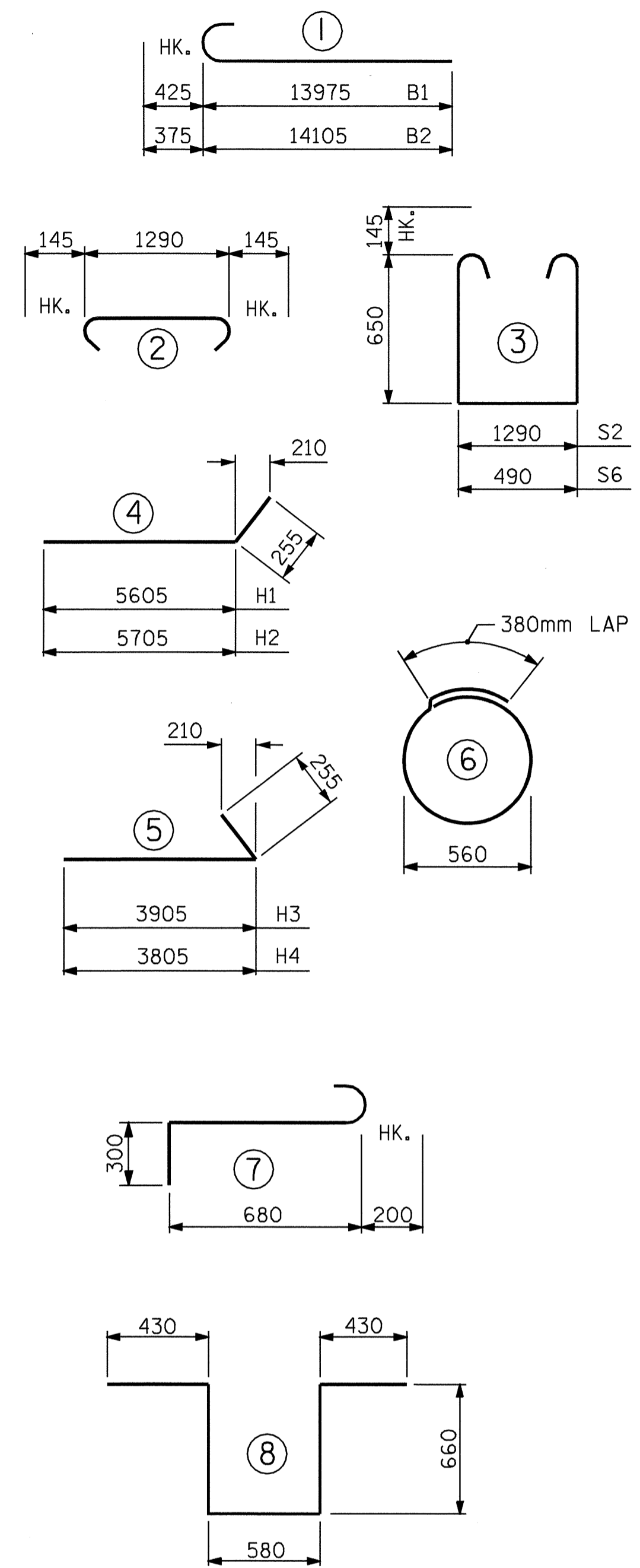


* POSITION OF PILE DURING WELDING.
PILE SPLICE DETAILS

NOTES

- STIRRUPS IN CAP MAY BE SHIFTED AS NECESSARY TO CLEAR ANCHOR BOLTS.
- FOR EPOXY PROTECTIVE COATING, SEE SPECIAL PROVISIONS.
- BACKWALL SHALL BE PLACED BEFORE APPLYING THE EPOXY PROTECTIVE COATING.
- THE TOP SURFACE AREAS OF THE END BENT CAPS SHALL BE CURED IN ACCORDANCE WITH THE STANDARD SPECIFICATIONS EXCEPT THAT THE MEMBRANE CURING COMPOUND METHOD SHALL NOT BE USED.
- THE TOP SURFACE OF THE CAP EXCEPT THE BRIDGE SEAT BUILDUPS SHALL BE SLOPED TRANSVERSELY FROM THE FILL FACE TO THE BACK FACE AT THE RATE OF 2%.
- EPOXY COAT THE END BENT CAP AFTER ADJUSTMENTS ARE MADE TO BEARINGS AND ANCHOR BOLTS ARE GROUTED.

BAR TYPES



ALL BAR DIMENSIONS ARE OUT TO OUT.

BILL OF MATERIAL

END BENT 1					
BAR NO.	SIZE	TYPE	LENGTH	WEIGHT	
B1	10	32	1	14400	922
B2	12	29	1	14480	879
B3	4	22	STR	13580	165
B4	16	13	STR	6960	111
B5	20	13	STR	1280	25
B6	18	13	STR	1100	20
H1	11	16	4	5860	100
H2	11	16	4	5960	102
H3	11	16	5	4160	71
H4	11	16	5	4060	69
K1	56	13	STR	6960	387
K2	4	13	STR	960	4
S1	120	16	2	1580	294
S2	120	16	3	2880	536
S3	18	13	6	2140	38
S4	6	19	7	1180	16
S5	2	19	8	2760	12
S6	6	16	3	2080	19
U1	69	13	9	1080	74
U2	12	13	9	2340	28
V1	146	16	STR	2620	594
V2	28	16	STR	3100	135
V3	18	16	STR	3160	88
V4	32	16	STR	2940	146
REINFORCING STEEL				kg	4835
CLASS A CONCRETE BREAKDOWN:					
POUR #1 (CAP & PART WINGS) = 32.0 CU. METERS					
POUR #2 (BACKWALL & PART WINGS) = 23.1 CU. METERS					
CLASS A CONCRETE TOTAL = 55.1 CU. METERS					
HP 310 X 79 STEEL PILES					
NO. = 11 LIN. METERS = 80					
STEEL PILE POINTS				EACH	11

PROJECT NO. R-2206B
LINCOLN COUNTY
 STATION: 123+38.105 -L-

SHEET 3 OF 3

STATE OF NORTH CAROLINA
 DEPARTMENT OF TRANSPORTATION
 RALEIGH

**SUBSTRUCTURE
 END BENT 1
 (LEFT LANE)**



REVISIONS						SHEET NO.
NO.	BY:	DATE:	NO.	BY:	DATE:	TOTAL SHEETS
1			3			86
2			4			

DRAWN BY: E. G. ALLEN DATE: 3-5-01
 CHECKED BY: H. A. LOCKLEAR DATE: 3-23-01