

NOTES

THE BARRIER RAIL IN A CONTINUOUS UNIT SHALL NOT BE CAST UNTIL ALL SLAB CONCRETE IN THE UNIT HAS BEEN CAST AND HAS REACHED A MINIMUM COMPRESSIVE STRENGTH OF 20.7 MPa.

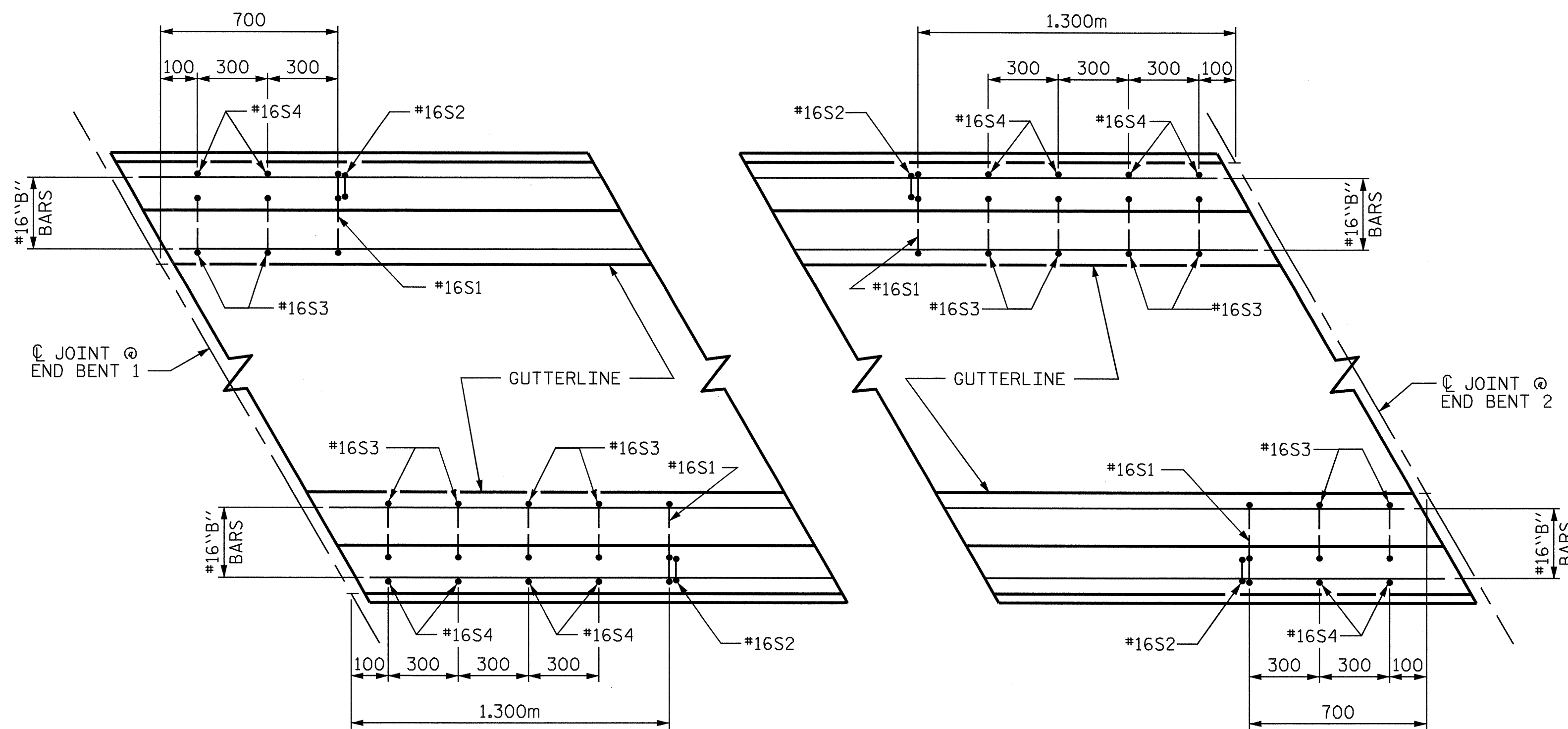
WHEN EVAZOTE JOINT SEAL IS REQUIRED, THE JOINT IN THE DECK SHALL BE SAWED PRIOR TO THE CASTING OF BARRIER RAIL.

ALL REINFORCING STEEL IN BARRIER RAILS SHALL BE EPOXY COATED.

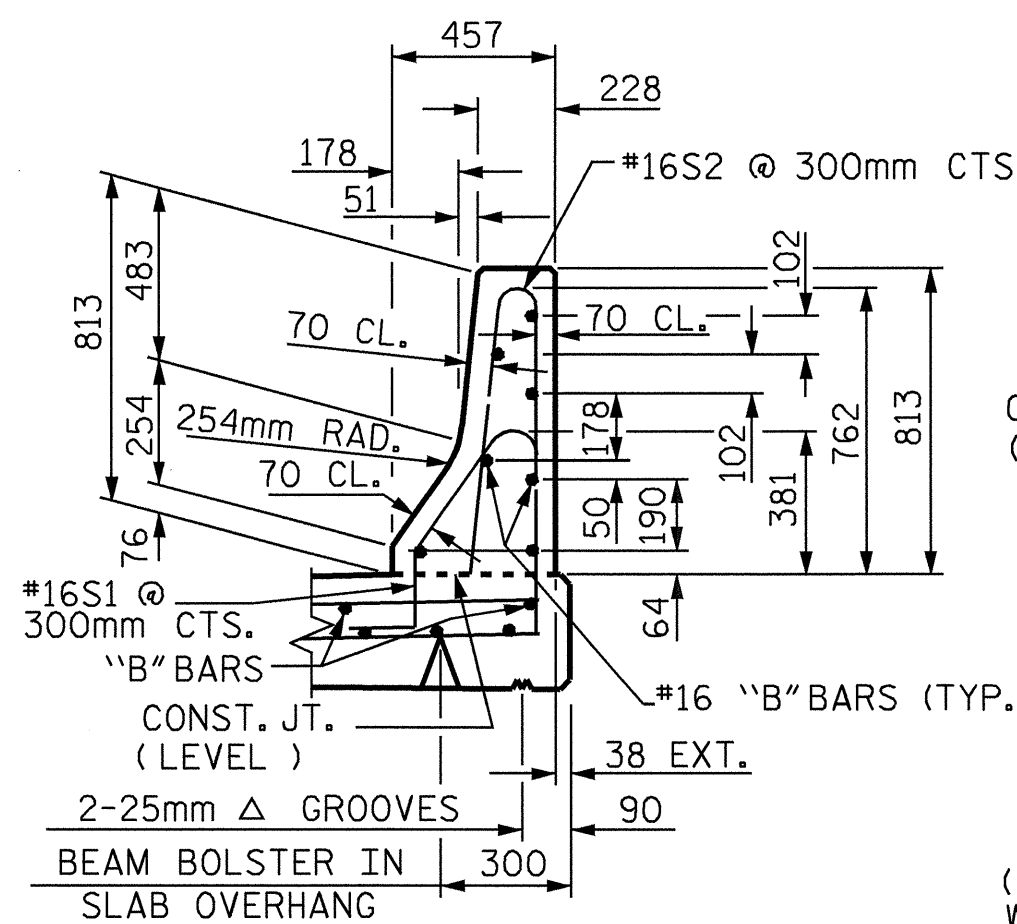
THE #16S3 THRU #16S6 BARS SHALL BE INSTALLED, USING AN ADHESIVE ANCHORING SYSTEM, AFTER SAWING THE JOINT. FOR ADHESIVELY ANCHORED ANCHOR BOLTS OR DOWELS, SEE SPECIAL PROVISIONS. THE YIELD LOAD FOR THE #16S3 THRU #16S6 BARS IS 82.7 KN. FIELD TESTING FOR THE ADHESIVE BONDING SYSTEM IS NOT REQUIRED.

VERTICAL GROOVED CONTRACTION JOINTS, 12mm IN DEPTH, SHALL BE TOOLED IN ALL EXPOSED FACES OF THE BARRIER RAIL AND IN ACCORDANCE WITH ARTICLE 825-10(B) OF THE STANDARD SPECIFICATIONS, A JOINT SHALL BE LOCATED AT EACH THIRD POINT BETWEEN BARRIER RAIL EXPANSION JOINTS. ONLY ONE JOINT IS REQUIRED AT MIDPOINT OF BARRIER RAIL SEGMENTS LESS THAN 6.1m IN LENGTH AND NO JOINTS ARE REQUIRED FOR THOSE SEGMENTS LESS THAN 3.5m IN LENGTH.

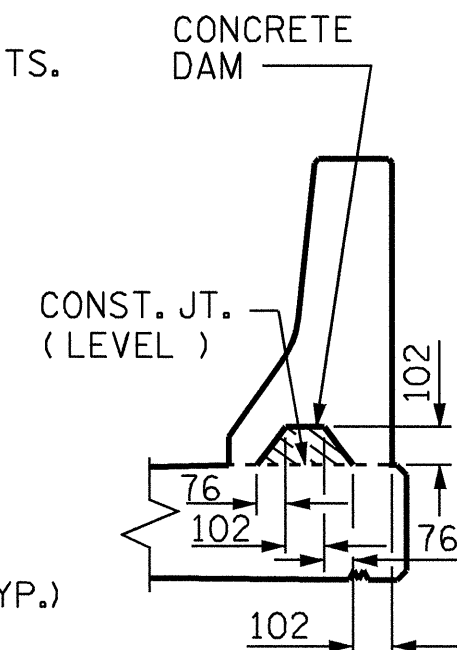
THE #16 S1 & S2 BARS MAY BE SHIFTED SLIGHTLY IN THE AREA OF THE GUARDRAIL ANCHOR ASSEMBLY TO CLEAR ASSEMBLY BOLTS.



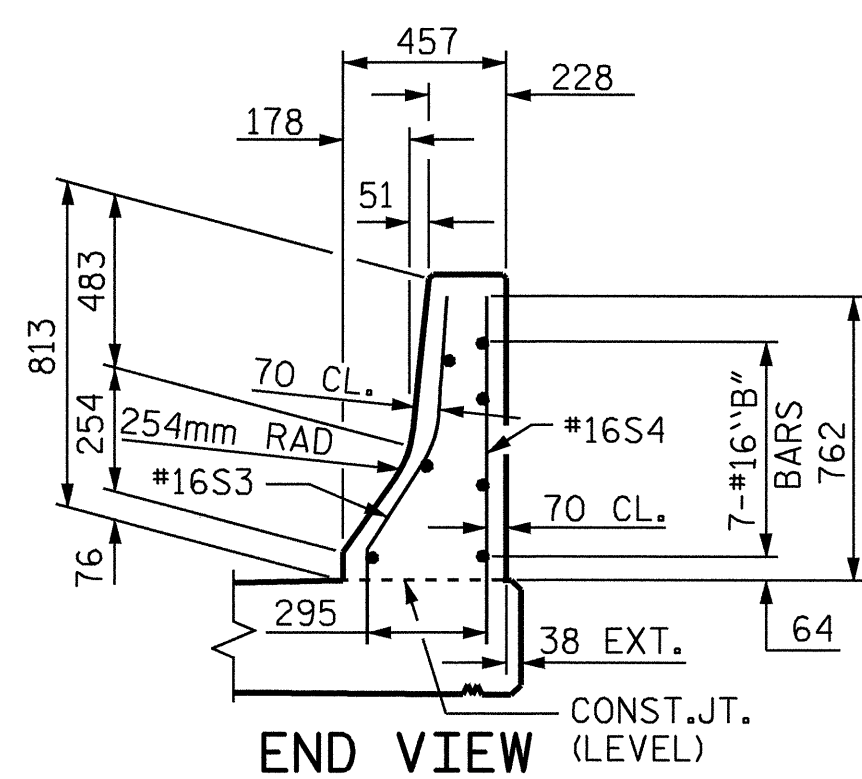
PLAN



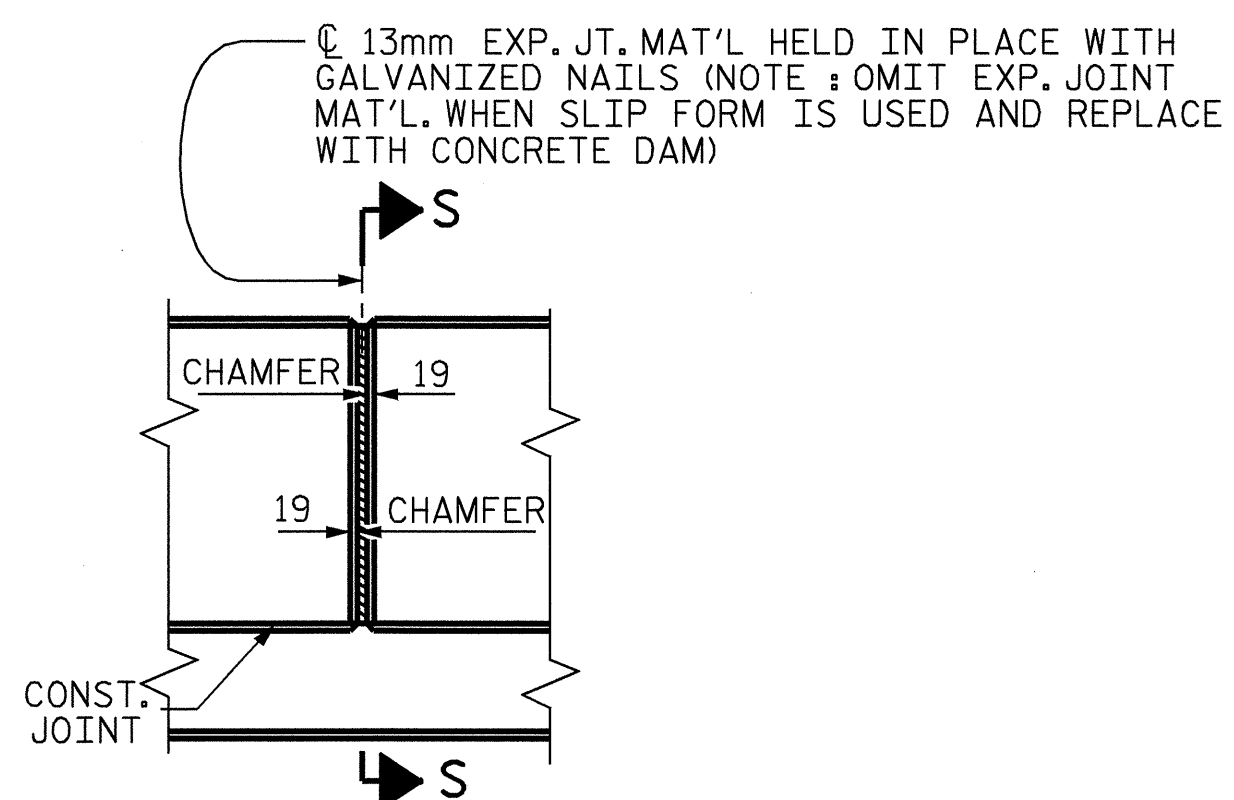
SECTION THRU RAIL



SECTION S-S
AT DAM IN OPEN JOINT
(THIS IS TO BE USED ONLY WHEN SLIP FORM IS USED)

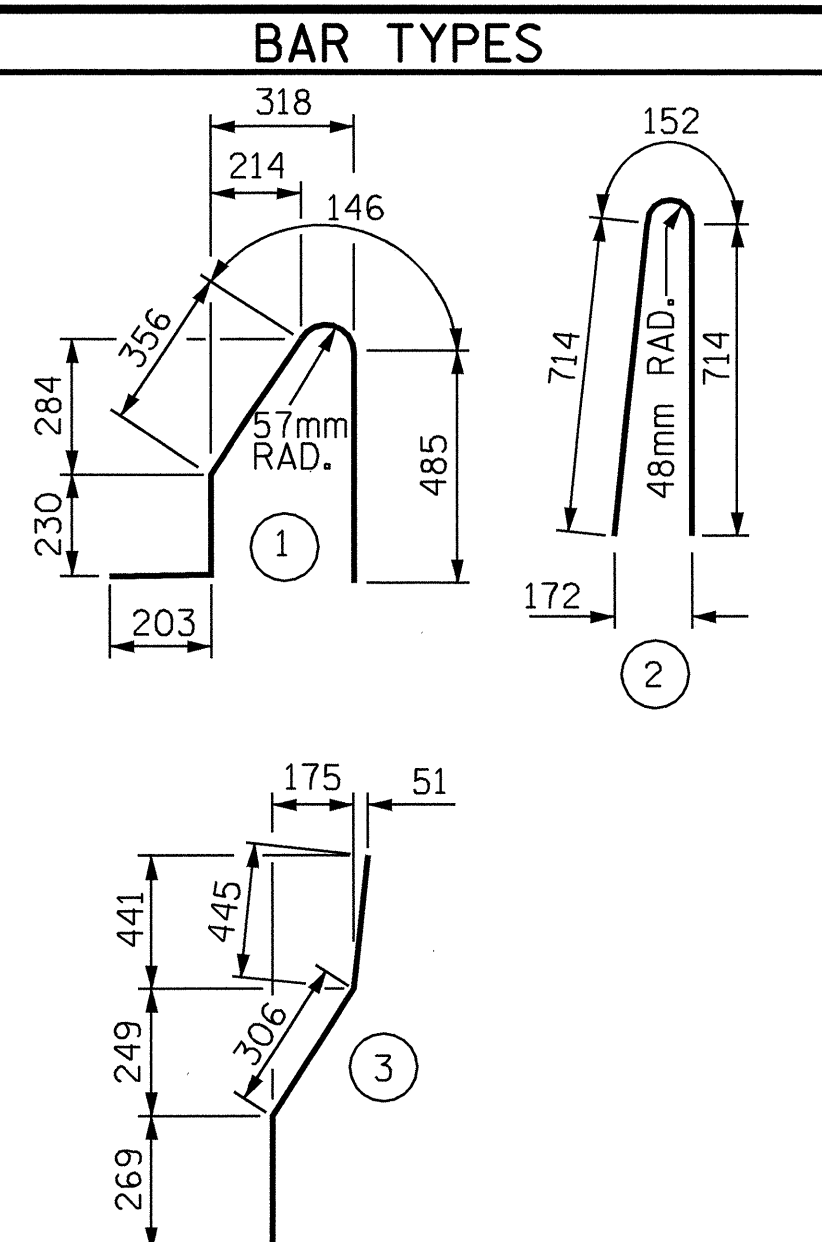


BARRIER RAIL - END OF RAIL DETAILS



ELEVATION AT EXPANSION JOINTS

BARRIER RAIL DETAILS



ALL BAR DIMENSIONS ARE OUT TO OUT

BILL OF MATERIAL

FOR CONCRETE BARRIER RAIL ONLY

| BAR | NO. | SIZE | TYPE | LENGTH | WEIGHT |
|------|------|------|------|--------|--------|
| *S1 | 1028 | #16 | 1 | 1420 | 2266 |
| *S2 | 1028 | #16 | 2 | 1580 | 2521 |
| *S3 | 12 | #16 | 3 | 1020 | 19 |
| *S4 | 12 | #16 | STR | 960 | 18 |
| *B11 | 56 | #16 | STR | 4420 | 384 |
| *B12 | 42 | #16 | STR | 6480 | 422 |
| *B13 | 14 | #16 | STR | 5880 | 128 |
| *B14 | 168 | #16 | STR | 8880 | 2315 |
| *B15 | 14 | #16 | STR | 7680 | 167 |

*EPOXY COATED REINFORCING STEEL 8240 kgs

CLASS AA CONCRETE 78.7 m³

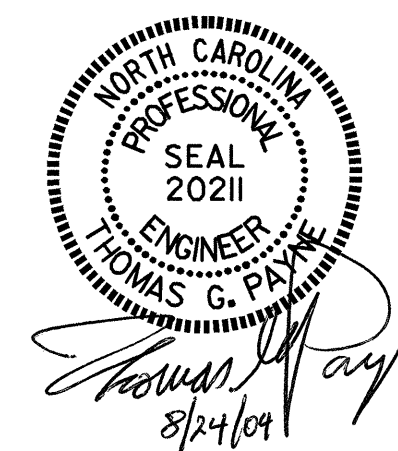
CONCRETE BARRIER RAIL 313.724 m

PROJECT NO. R-2206B
LINCOLN COUNTY
STATION: 123+38.105 -L-

SHEET 2 OF 2

STATE OF NORTH CAROLINA
DEPARTMENT OF TRANSPORTATION
RALEIGH

== SUPERSTRUCTURE ==
CONCRETE BARRIER RAIL
(RIGHT LANE)



| | |
|--------------------------------|-----------------------|
| ASSEMBLED BY : M. J. OSTRISHKO | DATE : 4-2-01 |
| CHECKED BY : E. G. ALLEN | DATE : 4-20-01 |
| DRAWN BY : ARB 5/87 | REV. 7/17/98 RWW/LES |
| CHECKED BY : SJD 9/87 | REV. 8/16/99 RWW/LES |
| | REV. 10/17/00 RWW/LES |

20-AUG-2004 16:05
W:\squad\2206b\Final Plans\str2\2206b02br.dgn
klayne

| REVISIONS | | | | SHEET NO. | |
|-----------|-----|-------|-----|-----------|-------|
| NO. | BY: | DATE: | NO. | BY: | DATE: |
| 1 | | | 3 | | |
| 2 | | | 4 | | |

TOTAL SHEETS: 86

STR. #2